

Southern Adventist University

KnowledgeExchange@Southern

Catalog, Undergraduate

University Archives & Publications

1939

Southern Junior College Catalogue 1939-1940

Southern Junior College

Follow this and additional works at: https://knowledge.e.southern.edu/undergrad_catalog



Part of the [Curriculum and Instruction Commons](#)

Recommended Citation

Southern Junior College, "Southern Junior College Catalogue 1939-1940" (1939). *Catalog, Undergraduate*. 2.

https://knowledge.e.southern.edu/undergrad_catalog/2

This Book is brought to you for free and open access by the University Archives & Publications at KnowledgeExchange@Southern. It has been accepted for inclusion in Catalog, Undergraduate by an authorized administrator of KnowledgeExchange@Southern. For more information, please contact jspears@southern.edu.

Registrars
Office
File Copy



The
Southland Scroll

Annual Catalogue
1939-40

SDA
LD
5101
.S367
.A16
1940

The Southland Scroll

Catalogue Number

Published bi-weekly by Southern Junior
College, Collegedale, Tennessee

VOLUME 11

NUMBER 1

Entered as second-class matter, June 20,
1929, at the Post Office at Collegedale,
Tennessee, under the act of Congress,
August 24, 1912.

**NOT TO BE TAKEN
FROM LIBRARY**

BEQUEST FORM

I,....., of the County of
....., and state of.....,
do hereby give, devise and bequeath unto Southern Junior College,
Incorporated, Collegedale, Hamilton County, Tennessee, the sum of
.....(\$.....) Dollars, for
educational purposes, said bequest to be used and expended in the
discretion of its governing board, or governing body, by whatever
name called.

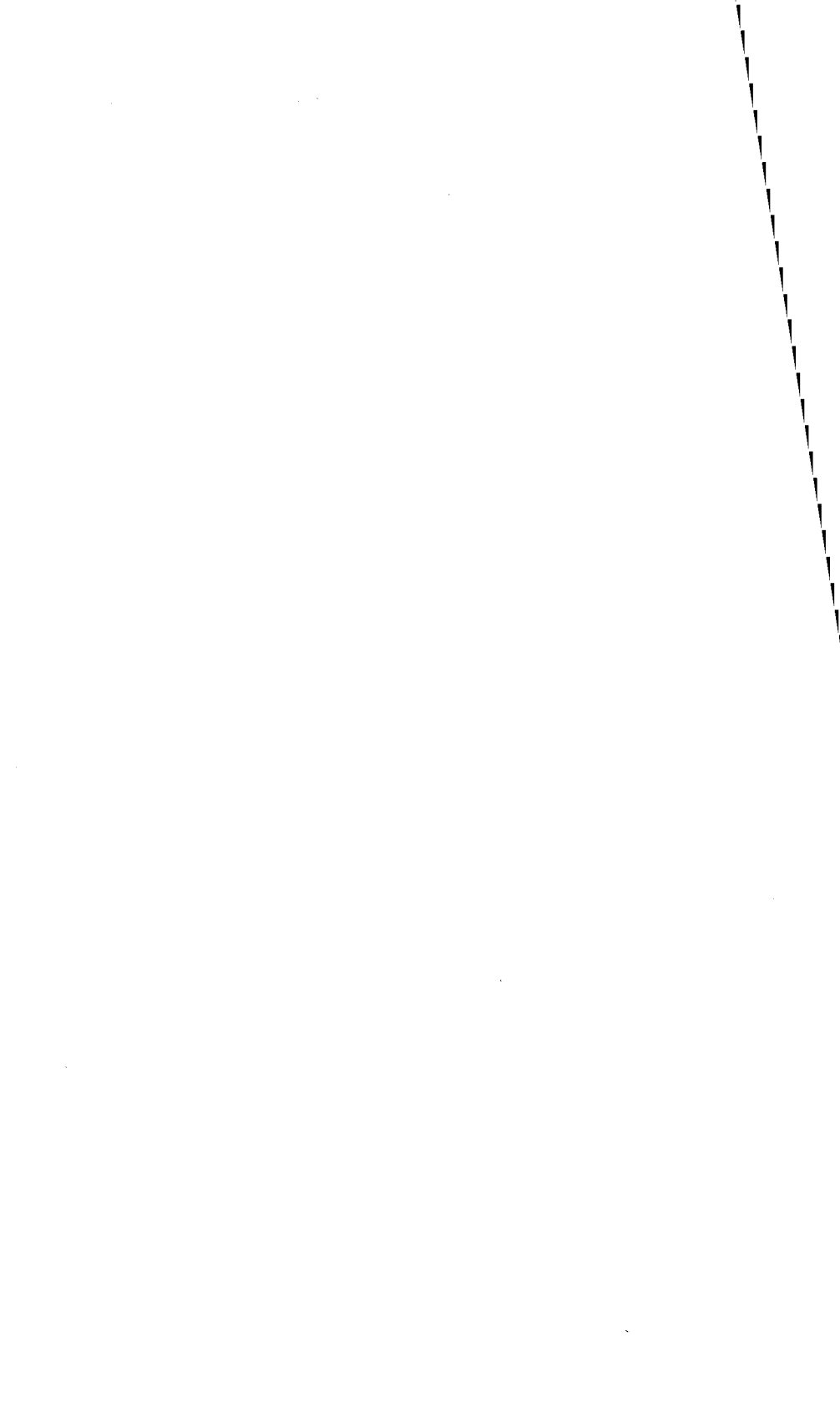
Witness my hand and seal, this.....day of....., 19.....

.....(Seal)

Signed by the said.....,
as and for last will and testament, in the presence of us, the under-
signed, who, at.....request, and in.....sight and presence, have
subscribed our names hereto as attesting witnesses, the day and date
above written.

Signature of three witnesses:

{
.....
.....
.....



Southern Junior College



Annual Catalogue

1939-1940



Collegedale, Tennessee

50A
LD
5101
.5367
.ABC
1940

Calendar For 1939

JANUARY							FEBRUARY							MARCH							APRIL						
S	M	T	W	T	F	S	S	M	T	W	T	F	S	S	M	T	W	T	F	S	S	M	T	W	T	F	S
1	2	3	4	5	6	7	1	2	3	4	1	2	3	4	1	2	3	4	5	6	7	8		
8	9	10	11	12	13	14	5	6	7	8	9	10	11	5	6	7	8	9	10	11	2	3	4	5	6	7	8
15	16	17	18	19	20	21	12	13	14	15	16	17	18	12	13	14	15	16	17	18	9	10	11	12	13	14	15
22	23	24	25	26	27	28	19	20	21	22	23	24	25	19	20	21	22	23	24	25	16	17	18	19	20	21	22
29	30	31	26	27	28	26	27	28	29	30	31	..	23	24	25	26	27	28	29	
.....	30	
MAY							JUNE							JULY							AUGUST						
S	M	T	W	T	F	S	S	M	T	W	T	F	S	S	M	T	W	T	F	S	S	M	T	W	T	F	S
.....	1	2	3	4	5	6	1	2	3	1	1	2	3	4	5								
7	8	9	10	11	12	13	4	5	6	7	8	9	10	2	3	4	5	6	7	8	6	7	8	9	10	11	12
14	15	16	17	18	19	20	11	12	13	14	15	16	17	9	10	11	12	13	14	15	13	14	15	16	17	18	19
21	22	23	24	25	26	27	18	19	20	21	22	23	24	16	17	18	19	20	21	22	20	21	22	23	24	25	26
28	29	30	31	25	26	27	28	29	30	..	23	24	25	26	27	28	29	27	28	29	30	31
.....	30	31	
SEPTEMBER							OCTOBER							NOVEMBER							DECEMBER						
S	M	T	W	T	F	S	S	M	T	W	T	F	S	S	M	T	W	T	F	S	S	M	T	W	T	F	S
.....	1	2	1	2	3	4	5	6	7	1	2	3	4	1	2					
3	4	5	6	7	8	9	8	9	10	11	12	13	14	5	6	7	8	9	10	11	3	4	5	6	7	8	9
10	11	12	13	14	15	16	15	16	17	18	19	20	21	12	13	14	15	16	17	18	10	11	12	13	14	15	16
17	18	19	20	21	22	23	22	23	24	25	26	27	28	19	20	21	22	23	24	25	17	18	19	20	21	22	23
24	25	26	27	28	29	30	29	30	31	26	27	28	29	30	24	25	26	27	28	29	30	
.....	31	

Calendar For 1940

JANUARY							FEBRUARY							MARCH							APRIL						
S	M	T	W	T	F	S	S	M	T	W	T	F	S	S	M	T	W	T	F	S	S	M	T	W	T	F	S
1	2	3	4	5	6	7	1	2	3	1	2	1	2	3	4	5	6						
8	9	10	11	12	13	14	4	5	6	7	8	9	10	3	4	5	6	7	8	9	7	8	9	10	11	12	13
15	16	17	18	19	20	21	11	12	13	14	15	16	17	10	11	12	13	14	15	16	14	15	16	17	18	19	20
22	23	24	25	26	27	28	18	19	20	21	22	23	24	17	18	19	20	21	22	23	21	22	23	24	25	26	27
29	30	31	25	26	27	28	29	24	25	26	27	28	29	30	28	29	30
.....	31	
MAY							JUNE							JULY							AUGUST						
S	M	T	W	T	F	S	S	M	T	W	T	F	S	S	M	T	W	T	F	S	S	M	T	W	T	F	S
.....	1	2	3	4	1	2	3	4	5	6	1	2	3	4	5	6	1	2	3	4		
5	6	7	8	9	10	11	2	3	4	5	6	7	8	7	8	9	10	11	12	13	4	5	6	7	8	9	10
12	13	14	15	16	17	18	9	10	11	12	13	14	15	14	15	16	17	18	19	20	11	12	13	14	15	16	17
19	20	21	22	23	24	25	16	17	18	19	20	21	22	21	22	23	24	25	26	27	18	19	20	21	22	23	24
26	27	28	29	30	31	..	23	24	25	26	27	28	29	28	29	30	31	25	26	27	28	29	30	31	
.....	30	
SEPTEMBER							OCTOBER							NOVEMBER							DECEMBER						
S	M	T	W	T	F	S	S	M	T	W	T	F	S	S	M	T	W	T	F	S	S	M	T	W	T	F	S
1	2	3	4	5	6	7	1	2	3	4	5	1	2	1	2	3	4	5	6	7				
8	9	10	11	12	13	14	6	7	8	9	10	11	12	3	4	5	6	7	8	9	8	9	10	11	12	13	14
15	16	17	18	19	20	21	13	14	15	16	17	18	19	10	11	12	13	14	15	16	15	16	17	18	19	20	21
22	23	24	25	26	27	28	20	21	22	23	24	25	26	17	18	19	20	21	22	23	22	23	24	25	26	27	28
29	30	27	28	29	30	31	24	25	26	27	28	29	30	29	30	31
.....	





CALENDAR OF EVENTS

1939—1940

Summer Session

June 12, Monday.....Registration
August 11, Friday.....Closing

First Semester

September 4, Monday
9:00 A. M.....Registration
8:00 P. M.....Opening Address
September 5, Tuesday
9:00 A. M.....Registration
September 7, Thursday
11:30 A. M.....First Chapel Service
September 8, Friday
7:00 P. M.....First Vesper Service
September 9, Saturday
8:00 P. M.....Faculty-Student Reception
October 11, 12, 13.....First Period Examinations
November 22, 23, 24.....Second Period Examinations
November 30.....Thanksgiving Day
December 21, 6:15 P. M.—January 2, 7:00 P.M.....Christmas Vacation
January 10, 11, 12.....Mid-year Examinations

Second Semester

January 15.....Registration
February 21, 22, 23.....Fourth Period Examinations
April 3, 4, 5.....Fifth Period Examinations
May 14, 15, 16, 17.....Final Examinations
May 17, Friday
8:00 P. M.....Senior Consecration Service
May 18, Sabbath
11:00 A. M.....Baccalaureate Sermon
May 19, Sunday
7:30 A. M.....Alumni Breakfast
10:00 A. M.....Commencement

BOARD OF TRUSTEES

J. K. Jones, President.....	Decatur, Ga.
J. C. Thompson, Secretary.....	Collegedale, Tenn.
C. V. Anderson.....	Nashville, Tenn.
Le Roy Coolidge, M. D.	Greeneville, Tenn.
C. O. Franz.....	Decatur, Ga.
Fred L. Green.....	Collegedale, Tenn.
R. I. Keate.....	Atlanta, Ga.
Lewis E. Lenheim.....	Orlando, Fla.
H. E. Lysinger.....	Charlotte, N. C.
John R. Mitchell, D.D.S.	Atlanta, Ga.
C. A. Russell.....	Decatur, Ga.
E. A. Sutherland, M. D.....	Madison College, Tenn.
M. V. Tucker.....	Nashville, Tenn.
H. W. Walker	Meridian, Miss.
E. C. Waller.....	Asheville, N. C.

EXECUTIVE COMMITTEE

J. K. Jones, Chairman.....	Decatur, Ga.
J. C. Thompson, Secretary	Collegedale, Tenn.
C. O. Franz.....	Decatur, Ga.
Fred L. Green.....	Collegedale, Tenn.
R. I. Keate.....	Atlanta, Ga.
C. A. Russell.....	Decatur, Ga.

THE FACULTY

JOHN C. THOMPSON, A. B., B. S., M. A.

Washington Missionary College; George Peabody College for Teachers; University of Maryland; Johns Hopkins University. Instructor, Maplewood Academy, 1917-1918. Educational Secretary of Southern Union Conference of Seventh-day Adventists, 1918-1925. Religious Education, General Conference of Seventh-day Adventists, 1925-1937. President of Southern Junior College, 1937—

ROBERT K. BOYD, A. B., M. A.

Emmanuel Missionary College; Michigan State College. Instructor in Mathematics and Accountant, Cedar Lake Academy, 1930-1937. Instructor in Mathematics and Accountant, Adelpian Academy, 1937-1938. Instructor, Business Administration, Southern Junior College, 1938—

STANLEY D. BROWN, A. B., A. B. in L. S., M. A.

Washington Missionary College; University of North Carolina; University of Maryland. Instructor, English, Librarian, Southern Junior College, 1935—

MARY HOLDER-DIETEL, A. B., M. A.

Washington Missionary College; University of Maryland; Alliance Francaise, Paris. Instructor, Home Study Institute, 1933-1938. Instructor, Spanish, Washington Missionary College, 1930-1933. Instructor, Modern Languages, Takoma Academy, 1933-1937. Instructor, Modern Languages, Southern Junior College, 1938—

OLA K. GANT, B. S., M. S.

College of Medical Evangelists; George Peabody College for Teachers; University of Colorado. Instructor, Chemistry, Nashville Agricultural and Normal Institute, 1926-1929. Instructor, Nutrition and Chemistry, Southern Junior College, 1929-1930. Dietitian, Florida Sanitarium & Hospital, 1930-1932. Dietitian, Colorado Sanitarium & Hospital, 1932-1934. Instructor, Chemistry and Biology, Southern Junior College, 1935—

GRACE EVANS-GREEN, A. B., M. A.

Emmanuel Missionary College; University of Nebraska; University of Chicago. Critic teacher, Emmanuel Missionary College, 1919-1920. Superintendent of Elementary Schools, Illinois, 1916-1919, 1920-1926. Normal Director, Emmanuel Missionary College, 1926-1928. Instructor, Education, Union College, 1928-1931. Associate Professor of Education, Emmanuel Missionary College, 1932-1936. Director, Teacher Training Department, Southern Junior College, 1938—

ELSIE ORTNER-JOHNSON, A. B., M. S.

Union College; The University of Tennessee. Preceptress, Oak Park Academy, 1929-1930. Instructor, Business Administration, Southern Junior College, 1937-1938, 1939—

DON C. LUDINGTON, A. B., B. S., M. A.

Emmanuel Missionary College; George Peabody College for Teachers. Principal, Battle Creek Academy, 1913-1914. Principal, Meiktila Technical School, Burma, 1915-1922. Educational Secretary, Florida Conference, 1923-1927. Principal, Forest Lake Academy, 1927-1929. Normal Director, Southern Junior College, 1930-1938. Instructor in History and Social Sciences, Southern Junior College, 1938—

MYRTLE V. MAXWELL, A. B., M. A.

Union College; George Peabody College for Teachers. Instructor, Elementary School, Atlanta, Georgia, 1912-1913. Instructor, Elementary School, Valle Crucis, North Carolina, 1914-1917. Instructor, Union College, 1927-1928. Critic Teacher, Southern Junior College, 1917-1926, 1928-1936. Instructor, Education, 1937-1938. Critic Teacher, Southern Junior College, 1938—

GEORGE J. NELSON, B. S., M. S.

Emmanuel Missionary College; University of Colorado. Instructor, Adelphian Academy, 1932-1934. Principal, High School, Two Buttes, Colorado, 1935-1937. Chemist and Plant Manager, Garland Chemical Company, Denver, Colorado, 1937-1938. Principal, Kiowa Centralized School, Roggen, Colorado, 1938-1939. Instructor, Physics and Mathematics, Southern Junior College, 1939—

HAROLD E. SNIDE, A. B., M. A.

Washington Missionary College; American University; Seventh-day Adventist Theological Seminary. Instructor, Home Study Institute, 1932-1934. Instructor, Bible, Washington Missionary College, Summer Session, 1934. Instructor, Bible and Greek, Southern Junior College, 1934—

MARY CARTER-CHAMPION, B. S.

Emmanuel Missionary College. Preceptress, Indiana Academy, 1929-1932. Preceptress, Fox River Academy, 1932-1933. Preceptress, Bethel Academy, 1933-1938. Preceptress, Indiana Academy, 1938-1939. Dean of Women, Instructor, Mathematics, Southern Junior College, 1939—

GEORGE B. DEAN, A. B.

University of Wichita; The University of Tennessee. Instructor, Science, Kline High School, Kline, Colorado, 1934-1935. Instructor, Science and Mathematics, Graysville Academy, 1937-1938. Graduate Laboratory Assistant, Southern Junior College, 1939—

OLIVIA BRICKMAN-DEAN, A. B.

Union College. Instructor, Elementary School, Wichita, Kansas, 1926-1936. Critic Teacher, Union College, 1936-1937. Critic Teacher, Southern Junior College, 1938—

RUDOLPH JOHNSON, A. B.

Union College. Superintendent of Lake City Schools, South Dakota, 1930-1933. Dean of Men, Instructor, History, Southern Junior College, 1937—

MAUDE I. JONES, A. B.

Mississippi State College for Women; University of Chicago; University of Georgia; George Peabody College for Teachers; The University of Tennessee. Instructor, Mississippi Public Schools, 1894-1897. Instructor, Latin, Mississippi State College for Women, 1899-1905. Instructor, Latin and Mathematics, Higbee School, Memphis, Tennessee, 1903-1912. Instructor, English and Latin, Southern Junior College, 1917—

HAROLD A. MILLER, B. MUS.

Otterbein College; Denison University; Eastman School of Music; Von Unschuld University. Director, Department of Music, Mount Vernon Academy, 1916-1929, 1934-1935. Director, Department of Music, Washington Missionary College, 1929-1934. Director, Department of Music, Southern Junior College, 1935—

EDYTHE COBET-WILLIAMS, R. N., B. S.

Florida Sanitarium and Hospital School of Nursing; Washington Missionary College. Director, Health Service for Women, Instructor in Nursing Education, Southern Junior College, 1934—

THEODORA WIRAK, A. B.

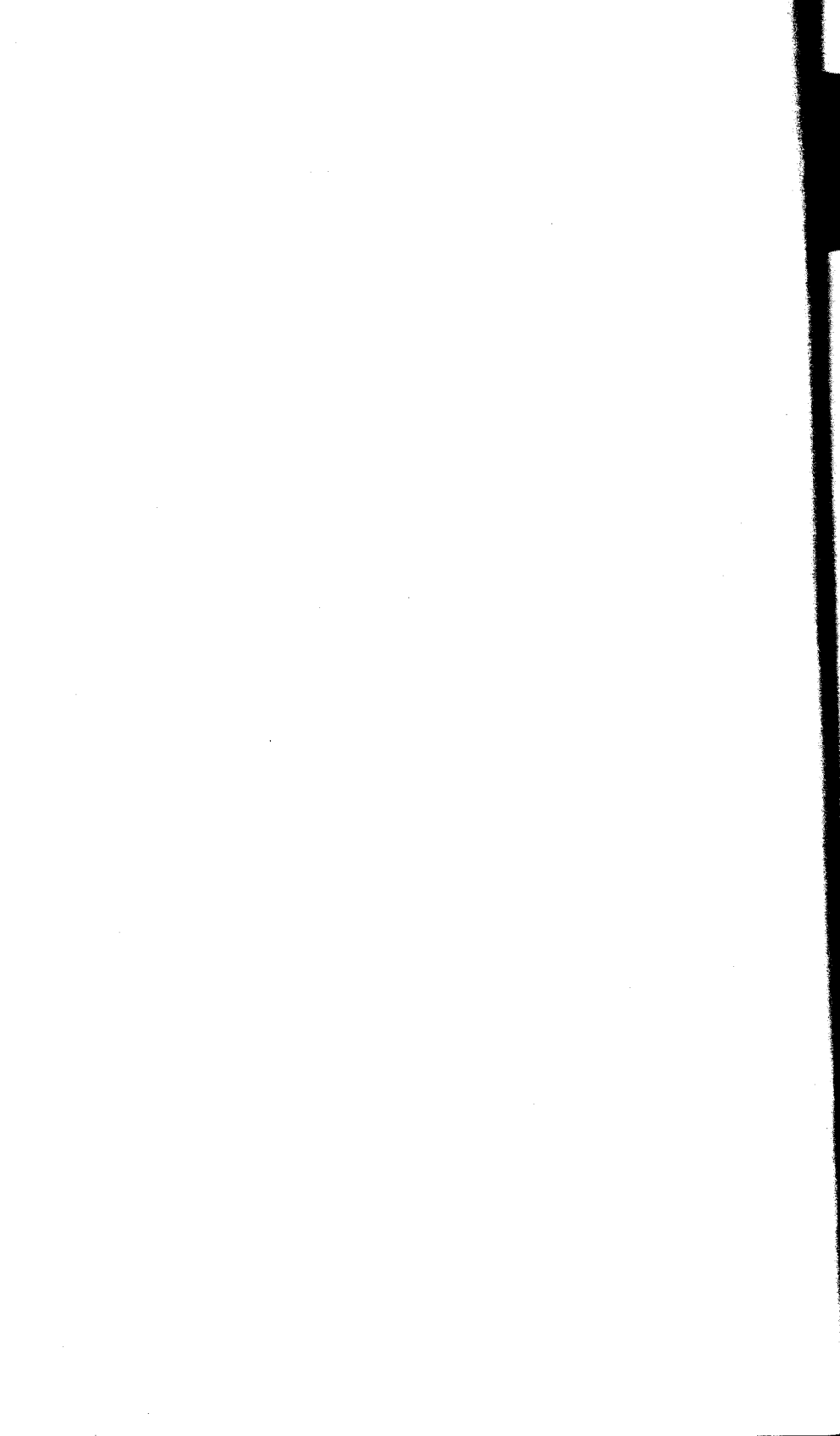
Union College. Treasurer and Instructor in Bookkeeping, Southern Junior College, 1936-1937. Registrar, Southern Junior College, 1937—

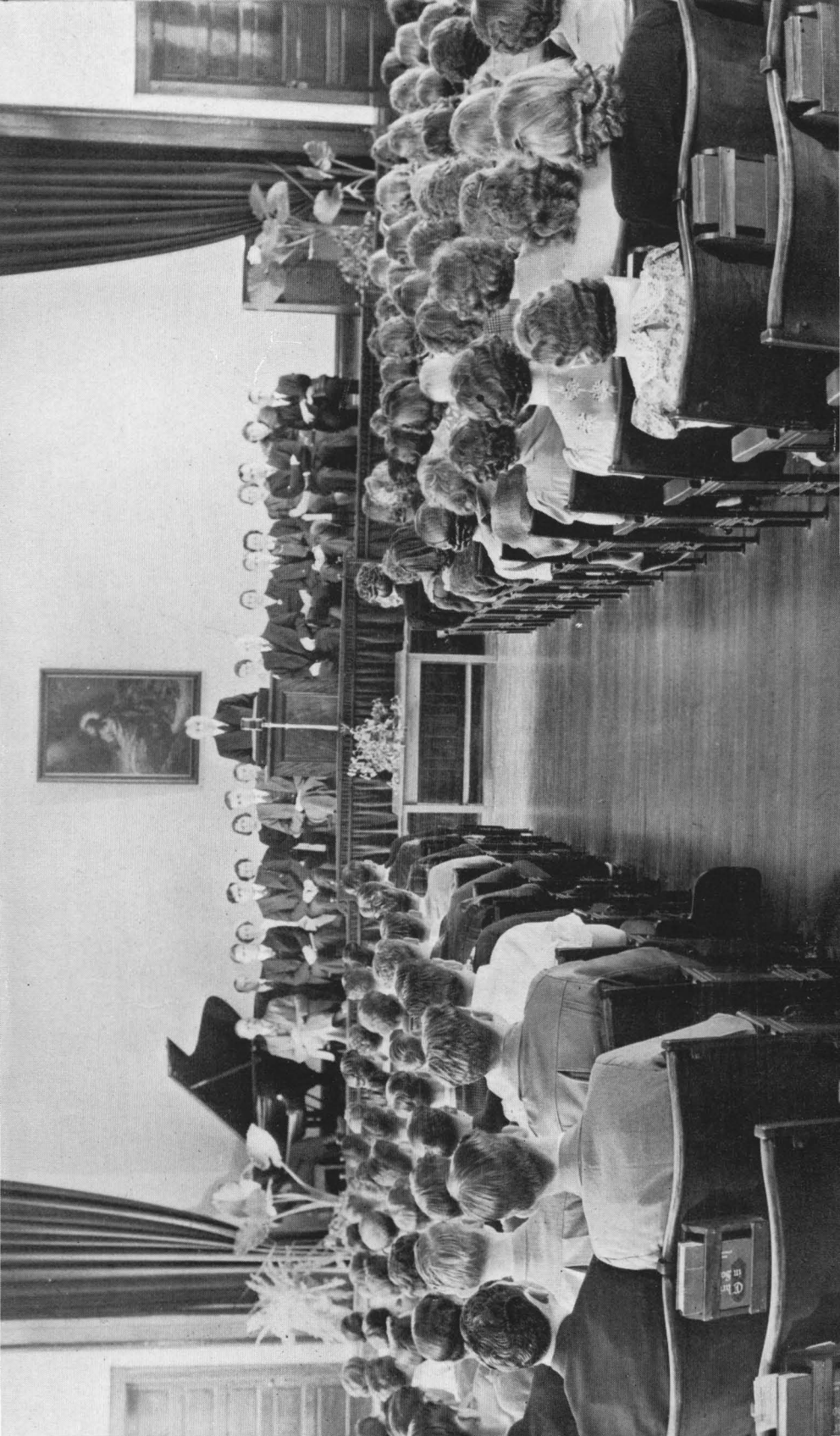
WALTER E. WILLIAMS, R. N.

Florida Sanitarium and Hospital School of Nursing. Private duty nursing, 1931-1935. Director, Health Service for Men, Southern Junior College, 1936-1937. Director, Health Service for Men, Instructor, Physical Education, Southern Junior College, 1937—

OLIVE ROGERS-BATSON

Mississippi State Teachers College; Washington Missionary College; University of Chattanooga. Instructor, Piano and Expression, Alabama-Mississippi Academy, 1934-35. Instructor, Piano and Expression, Southern Junior College, 1937—





OFFICERS OF ADMINISTRATION

John C. Thompson.....	President and Business Manager
Fred L. Green.....	Treasurer
Theodora Wirak.....	Registrar, Secretary of Faculty
Rudolph Johnson.....	Dean of Men
Mary Carter-Champion.....	Dean of Women
Stanley D. Brown.....	Librarian
Alberta Reiber-Rainwater.....	Matron

SUPERVISORS IN VOCATIONAL EDUCATION

John C. Thompson.....	President and Business Manager
Fred L. Green.....	Treasurer
Eric Lundquist.....	Cashier
David T. Carnahan.....	Superintendent, Hosiery Mill
John W. Gepford.....	Superintendent, Broom Factory
Roger F. Goodge.....	Superintendent, College Press
Hartwig J. Halvorsen.....	Superintendent, Farm and Dairy
Paul T. Mouchon.....	Engineer
Marlete Turner-Pitton.....	Superintendent, Laundry
Alberta Reiber-Rainwater.....	Matron
Arthur J. Sands	Acting Superintendent, Woodcraft Shop

STANDING COMMITTEES

Government

John C. Thompson
Fred L. Green
Theodora Wirak
Mary Carter-Champion
Rudolph Johnson
Hartwig J. Halvorsen

Library

Stanley D. Brown
John C. Thompson
Harold E. Snide
Ola K. Gant
Robert K. Boyd
Mary Holder-Dietel

Extracurricular Activities

Harold A. Miller
Rudolph Johnson
Mary Carter-Champion
Olive Rogers-Batson
Grace Evans-Green
Elsie Ortner-Johnson
George J. Nelson
Roger F. Goodge

Religious Activities

Harold E. Snide
John C. Thompson
Don C. Ludington
John W. Gepford
Olivia Brickman-Dean
Maude I. Jones

Health

Walter E. Williams
Rudolph Johnson
Mary Carter-Champion
Alberta Reiber-Rainwater
Edythe Cobet-Williams

Pupil Guidance

Don C. Ludington
Maude I. Jones
Mary Holder-Dietel
Robert K. Boyd

Finance

John C. Thompson
Fred L. Green
Theodora Wirak
Eric Lundquist

SOUTHERN JUNIOR COLLEGE



HISTORY

The year eighteen hundred ninety-three marked the beginning of the educational work of Seventh-day Adventists in the South. At that time, a small school, afterward to be known as the Southern Training School, was established in Graysville, Tennessee. Twenty-three years later, there was a change both in name and location, and now Southern Junior College at Collegedale, Tennessee, serves the constituency of the South-eastern states.

The College is situated on the Atlanta Division of the Southern Railway, eighteen miles east of Chattanooga, on a beautiful nine-hundred acre estate. This rural environment has been one of the strongest factors in the development of the institution, in that it has furnished the isolation so necessary to genuine progress.

Nineteen hundred sixteen saw Southern Junior College begin its struggle for existence on a farm with an estimated value of \$12,000 and with only seven or eight real houses. Cabins, tents, and other temporary structures played an important part in those early days.

Nineteen hundred thirty-nine dawned upon an established plant with a present worth of \$380,000 and with buildings and equipment as follows: An administration hall, a demonstration-school building, two large dormitories, a hosiery mill, a woodcraft shop, a food factory, a print shop, a broom factory, a dairy barn, a garage, a horse barn, an ice plant, and nineteen residences. Surely in the light of this remarkable growth, one is constrained to exclaim, "What hath God wrought!"

In an effort to carry out the instruction given in the Spirit of Prophecy as to the three-fold education of the youth, Southern Junior College offers training which will fit one for work in religious, professional, or vocational fields. The sincere hope of the institution is: That many of its students, under the influence of an atmosphere which is permeated by Christian faith and Christian ideals, may catch the vision of evangelism, and be led to devote their lives to the ministry. That others, under the guidance of those who have attained the coveted goal of excellent scholarship combined with unaffected piety, may follow the gleam of

SOUTHERN JUNIOR COLLEGE

intellectual development, and dedicate their talents to the teaching profession. That still others, because of the stress which is placed upon the dignity of labor, may turn their attention to the practical side of life, and be led to give consecrated service in the world of industries.

This hope is destined to reach its glad fruition only when, from year to year, there comes to Southern Junior College the assurance that it has instilled into the youth who have sojourned within its walls, principles of such rugged sincerity and fearless integrity that each one, as he goes forth to meet the future, will pledge himself unhesitatingly to help satisfy "the greatest want of the world—the want of men; of men who will stand for right though the heavens fall."

PURPOSE

The primary objectives of Southern Junior College are the development of Christian character and the training of workers for the missionary enterprises which the Seventh-day Adventist denomination is carrying on in all parts of the world.

The school is open to all worthy persons who come for the purpose of doing earnest, faithful work. Those who have little desire to study, or who are careless in their deportment are not encouraged to enter.

Young people should remember that the school is a Christian institution. Unless they are willing to give due respect to the Word of God, the Sabbath, worship and other religious exercises of the institution, they should not apply for admittance.

ACCREDITATION

Southern Junior College is fully accredited by, or is a member of, the following organizations: Southern Association of Colleges and Secondary Schools, Tennessee State Department of Education, American Association of Junior Colleges, Southern Association of Private Schools, Tennessee College Association, Mid-South Association of Private Schools, Seventh-day Adventist Association of Colleges and Secondary Schools.

EXPENSES

The College classifies its students at the time of admission in two groups. Those who are registered for regular class work are designated as "matriculated students." Those who are admitted to employment in the College industries, and who do not carry class work until sufficient credit has been accumulated, are known as "employed students." Regulations of the school apply to all students alike, regardless of classification.

ENTRANCE DEPOSITS

At the time of admission an entrance deposit is required of all students as follows: matriculated students, \$50.00; employed students, \$25.00; resident matriculated students, college or preparatory, \$20.00; resident matriculated elementary students, \$10.00.

This deposit will be held as a guarantee that each periodic statement will be paid when presented, and cannot under any circumstances be drawn upon during the school term, either for cash or for the payment of a school bill or for any personal expenses, but will be applied on the statement of the last period the student is in school. Students remaining in school less than eight weeks will be charged a matriculation fee of \$5.00.

TUITION

The yearly charges for tuition in all departments are as follows:

Elementary Department

Grades I to III.....	\$27.00
Grades IV to VI.....	36.00
Grades VII and VIII.....	54.00

In the elementary school, the tuition charges also include medical examination, library, and manual training.

Preparatory or High School Department

Tuition for the year..... 4 units or subjects.....	\$130.00
Tuition for the year..... 3 units or subjects.....	100.00
Tuition for the year..... 2 units or subjects.....	70.00
Tuition for the year..... 1 unit or subject.....	40.00

Collegiate Department

Tuition for the year..... 32 sem. hrs.....	\$130.00
Tuition for the year..... 24 sem. hrs.....	100.00
Tuition for the year..... 16 sem. hrs.....	70.00
Tuition for the year..... 8 sem. hrs.....	40.00

SOUTHERN JUNIOR COLLEGE

For fewer than eight hours, the charge is \$1.25 an hour for a four-week period.

Private work is discouraged, and no credit will be given for such work unless satisfactory arrangements have been made in advance with the Registrar. The charge for private work is \$7.00 per semester hour of credit.

GENERAL FEES

Transcripts (except first one).....	\$1.00
Change of Program.....	\$1.00
Chorus, Band, or Orchestra, a semester.....	3.50
Diploma	3.50
Entrance Examination	1.00
Key Deposit.....	1.00
Lecture Course.....	2.00
Special Examination.....	1.00

◆ Fees Charged in Collegiate Department Each Semester

Bacteriology	\$10.00
Chemistry	10.00
Clothing and Textiles.....	2.00
College Physics.....	6.00
Foods and Dietetics.....	5.00
Manual Arts	2.00
Medical (students residing outside the dormitories).....	5.00
Normal Art.....	2.50
Physiology	5.00
Piano rent, 1 hour a day.....	3.00
Piano rent, 2 hours a day.....	5.00
Printing	5.00
Practical Electronics	10.00
Typewriter rent, 1 hour a day.....	3.00
Typewriter rent, 2 hours a day	5.00
Zoology	8.00

◆ No fees are refundable

CHARGES FOR MUSIC

Students who enroll for music are expected to continue lessons for at least a half-year. The charge for all private music instruction is \$18.00 a semester.

COLLEGEDALE, TENNESSEE

No refund on lessons will be given to students who drop their work during a semester. In no case will lessons which are lost on account of the student's absence be made up.

TRANSPORTATION

Free transportation to and from Ooltewah will be provided the first three days of each semester and the last three days of the school term. At intermediate times a charge of fifty cents will be made.

The school provides transportation and chaperonage to Chattanooga two days each week. The charge for each trip is seventy-five cents a student.

DORMITORY EXPENSE

A charge of \$3.25 each week is made to all students who reside in the dormitories. On this basis two students are expected to occupy one room. The charge includes: room, provided with a maximum of 120 watts of electric light, and steam heat; laundry to the extent of \$1.25 each week; medical care, which provides for a physical examination at the beginning of school, workmen's compensation insurance, and nursing care not to exceed three weeks. The rate quoted does not cover the charge for visits made by a physician to any student, nor calls made by the school nurse to those living outside the dormitory.

One week constitutes a minimum charge. No refunds from room rent are made for an absence of two weeks or less. Refunds may be made for an absence of more than two weeks provided property is withdrawn and the room released.

Students should have each garment marked with a cloth name tape. These name tapes may be secured from the Sterling Name Tape Company, Winsted, Conn.

BOARD

The cafeteria plan of boarding, which allows the student the privilege of choosing his food and paying only for what he selects, is used. The minimum weekly charge for dormitory students is \$3.00 for young women, and \$3.75 for young men. Three meals a day are served. Students living in the dormitories are expected to take their meals in the dining room. No allowance for absence from the campus is made other than one week during the holiday vacation, and in case of emergencies.

PAYMENTS OF ACCOUNTS

Charges for tuition, room, and board will be made each four-week period, and a statement will be issued to each student. Fifteen days will be allowed after the date of statement for settlement of accounts. Failure to make prompt settlement within the period specified may terminate the student's connection with the school.

The College Board has made the costs as low as is consistent with educational efficiency. The school, therefore, must expect prompt payment of all outstanding bills. Accounts that remain unpaid thirty days after statement is presented are subject to six per cent yearly interest. Students are permitted to write mid-term or final examinations only when their accounts are settled, or when satisfactory arrangements have been made with the Finance Committee. Grade transcripts and diplomas are issued only to students whose accounts are paid in full.

DISCOUNTS

Tuition and dormitory expenses for the year are divided into nine periods (See period calendar, page three.) Statements are subject to five per cent discount of current charges on tuition and room rent only, if paid not later than fifteen days after date of statement. PLEASE NOTICE DISCOUNT DATE STAMPED ON EACH STATEMENT! The entire amount of statement must be paid in order to receive any discount.

Discounts are not allowed to those who earn on the campus fifty per cent or more of the current period school expenses.

A discount of eight per cent will be granted for cash in advance for the semester, ten per cent for the school year, on tuition and room rent only. A statement for charges other than tuition and room rent, such as board, will be made each period, and this amount should be paid on or before the expiration of the current discount date, or discount allowed for advance payment will be immediately charged back to the student's account.

No deposit will be required if one semester of school work is paid for in advance.

COLLEGEDALE, TENNESSEE

Where there are three or more students from the same family, and the charges are met by one individual, an additional discount of five per cent will be allowed if the account is paid during the discount period.

Missionaries or dependents of same on furlough are allowed a fifty per cent discount on tuition only, the first year of furlough, provided the remaining expenses are paid before the close of the discount period.

Students qualifying for colporteur scholarship bonuses are not eligible for regular discounts as herein listed, because of the generous discount otherwise allowed.

STUDENTS SHOULD BE PROVIDED WITH SUFFICIENT FUNDS IN ADDITION TO REQUIRED ENTRANCE FEES TO COVER COST OF BOOKS, STATIONERY, CLOTHING, DENTISTRY, AND ALL PERSONAL ITEMS.

Post-dated checks are not acceptable.

CHANGE OF PROGRAM

When a student drops any of his class work or leaves the school, he must present to the business office a drop voucher from the Registrar's office. Tuition will be charged until such voucher is received. Those who drop school work during any four-week period will be charged for the full period. Two weeks will be allowed at the beginning of each semester for a change of program without charge.

EXPENSES ESTIMATED

	PREPARATORY		COLLEGIATE	
	Boys	Girls	Men	Women
Tuition.....	\$130.00	\$130.00	\$130.00	\$130.00
Fees.....			15.00	15.00
Room, Laundry, etc.....	123.50	123.50	123.50	123.50
Board.....	142.50	114.00	142.50	114.00
Average or minimum	\$396.00	\$367.50	\$411.00	\$382.50

These figures are minimum charges. The board of some students will run as high as \$50.00 above these minimums.

COLPORTEUR SCHOLARSHIPS

Colporteurs who sell \$530 worth of subscription books receive the usual fifty per cent commission, \$265, plus a bonus of \$66, making a total credit of \$331. This amount is not sufficient to cover all school expenses of the student, but the College agrees to furnish labor so that the student may earn the remainder.

TUITION SCHOLARSHIPS

Each year the College, in conjunction with the several local conferences of the Southern Union, awards eleven \$50 cash scholarships to be applied on tuition. The method of choice is as follows: The faculty of each designated school nominates its candidate, which nomination must be approved by the school board and recommended to the educational board of the local conference, which has final choice. The selection of nominees must be based on scholarship, character, personality, and promise of future leadership. The names of the winners are announced at the time of commencement at the College. The following schools are eligible to participate in this plan:

Asheville Agricultural School
Atlanta Junior Academy
Forest Lake Academy
Fountain Head Rural School
Memphis Junior Academy
Nashville Junior Academy
Pewee Valley Academy
Pine Forest Academy
Pisgah Institute
Sand Mountain Junior Academy
Southern Junior College Preparatory Department

EDUCATIONAL FUND

Many promising young people are deprived of the privilege of attending college because of a lack of necessary means. To aid these, an earnest effort has been made to obtain donations for the establishment of an educational fund, from which students worthy of help may

COLLEGEDALE, TENNESSEE

borrow money for a reasonable length of time. Faithfulness in refunding these loans will make it possible for the same money to assist several students in school. There have been some gifts, and they have been expended in such a way as to help several promising young men and women to complete their work; but the needs of this class of students have been greater than the amount of funds on hand, and it has consequently been impossible to render the desired assistance to as many as should be helped. It, accordingly, has been determined to invite the attention of patrons and friends of the school to these facts and to ask them to give such means as they may desire, to be used for this purpose. We should be glad to correspond with any who think favorably of this plan, and shall continue to use the utmost caution in the use of the means donated, that the wishes of the donors may be fully carried out, and that the best results may be obtained.

"In each conference a fund should be raised to lend to worthy poor students who desire to give themselves to the missionary work; and in some cases they should even receive donations. When the Battle Creek College was first started, there was a fund placed in the Review and Herald office for the benefit of those who wished to obtain an education, but had not the means. This was used by several students until they could get a good start; then from their earnings they would replace what they had drawn, so that others might be benefited by the fund. The youth should have it plainly set before them that they must work their own way as far as possible and thus partly defray their expenses. That which costs little will be appreciated little. But that which costs a price somewhere near its real value will be estimated accordingly."—"Testimonies," Vol. VI, pp. 213, 214.

EMPLOYMENT OF STUDENTS

The College endeavors through employment in its industrial organizations to assist students in defraying their school expenses. Many students who are industrious and frugal succeed in earning the entire cost of their education. Only students of serious purpose should expect to be thus successful, and then only on a restricted class program.

Many letters come to us asking whether students can work for their expenses, wholly or in part. All we can promise is that we furnish,

SOUTHERN JUNIOR COLLEGE

to those who prove themselves efficient and worthy, such work as is available. Since work of the College is performed mainly by students, those who are willing and capable will probably find all the work that their school program will allow them to perform.

Students who apply for admission to the College with the intention of obtaining employment by which to accumulate financial credit, will be required to pay an entrance deposit of \$25.00. This deposit cannot be withdrawn, but must be applied on school expenses. It is not refundable if the student does not remain a full school year.

No cash may be drawn from the business office on accounts. Deposit accounts for those who wish to put their funds in safe keeping, subject to withdrawal in person only, may be opened at the business office.

Students who are given work in the various departments of the school or affiliated industries, and who have a credit balance as a result of such labor, may authorize the payment to the church treasurer as tithe, ten per cent of their earnings. The remainder must be used for tuition, board, and room. No student who is neither employed nor matriculated, is permitted to remain at the College.

A student who has a credit balance as a result of labor, at the time of graduation or departure from the College, may transfer this credit to a member of his immediate family, but in no case will he be paid cash for labor in excess of the allowance granted in the preceding paragraphs.

All purchases from the College store or from other departments on the campus must be paid for in cash. No charge accounts are accepted

FINANCIAL PLANS

There are several different bases upon which students may attend Southern Junior College, depending upon the sum of money they expect to pay into the school, and consequently upon the amount of industrial labor they must do. For the convenience of prospective students in determining the basis upon which they can attend school, the following summary is given. **In applying for admission to Southern Junior College, please indicate which plan best fits your individual situation.**

COLLEGEDALE, TENNESSEE

Each of the financial plans below includes tuition for the specified class load, room, laundry, medical fee, and the average expense for board. Because of our using the cafeteria plan, whereby an individual pays for just what he eats, one's total expense may be a bit more or less than the average figures here given. The six plans presented below do not include the expenses for books, laboratory fees, private lessons in expression or music. Each plan is subject to variation to fit the needs of the individual student.

Plan Number 1. On this plan the student will pay all of his expenses in cash. For boys this will average \$412.25 for a school year; for girls, \$372.25. College students will have in addition fees of from \$5.00 to \$56.00, depending upon the courses taken. Certain of our curricula are so heavy that if they are completed in the number of semesters indicated, a student will have little time for labor.

Plan Number II. A student accepted on this plan will labor ten hours per week, which labor will reduce the total expense by \$72.00. For many students this is all the work a full program of studies will allow.

Plan Number III. On this plan the student will labor twenty hours per week, the maximum allowed anyone who attempts full school work. This amount of labor will earn \$150.00 during the school year.

Plan Number IV. A student on this plan elects to labor thirty hours per week. This will permit of but twelve semester-hours of class work instead of sixteen (or three high school units), and amounts to \$225.00 for the school year, which with the reduced tuition lowers the above expenses by \$255.00. Three years will be required for the completion of a two-year course.

Plan Number V. A student accepted on this plan will work forty hours per week. This heavy program of labor permits a student to take but one-half of a full school load, amounts to \$300.00, and with the proportionate reduction in tuition lowers the total charges for the school year by \$360.00. Four years will be required to complete a two-year course.

Plan Number VI. A few students can be accepted on the basis of meeting their entire school expenses by working in the hosiery mill. A three-year contract must be signed by the student, requiring forty hours of labor per week and allowing of one-half of a full class program during the regular session plus an additional subject during the summer. Two years of school work can be completed during the three-year period.

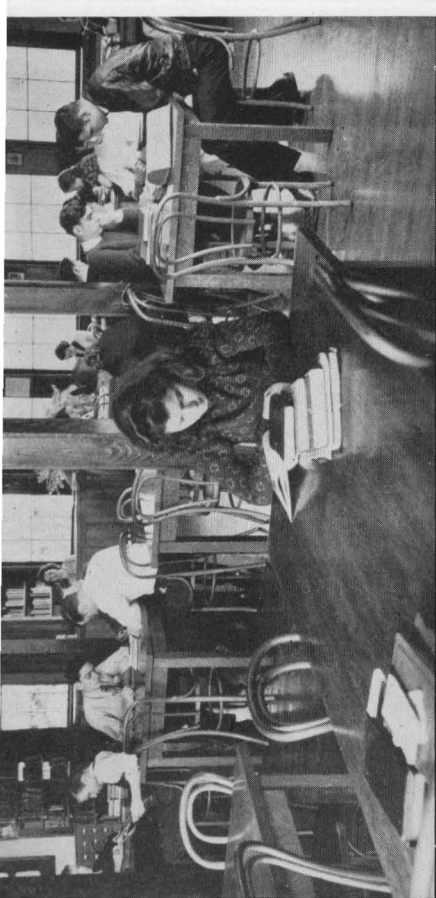
Financial Plans Summarized

* Plan	Number Sem. Hours Student May Carry	Number of Years to Finish Two-Year Course	** Actual School Expenses	*** Book and Fee Expenses	Total School Expenses, including Books but not Fees	Hours of Labor per Week	Value of Labor	Amount of Cash to be Paid S. J. C.—one Year.
I	32	2	\$412.25	Books \$30. Fees \$5-56, according to course.	\$442.25	None	None	\$442.25
II	32	2	\$412.25	As above.	\$442.25	10	\$ 72.00	\$370.25
III	32	2	\$412.25	As above.	\$442.25	20	\$150.00	\$292.25
IV	24	3	\$382.25	Books \$24. Fees \$5-40, according to course.	\$406.25	30	\$225.00	\$181.25
V	16	4	\$352.25	Books \$15. Fees \$5-28, according to course.	\$367.95	40	\$300.00	\$ 67.25
VI	16	3	\$508.00	Books \$24. Fees \$5-40, according to course.	\$532.00	40	\$550.00	None

* Plans I to V require a \$50.00 entrance deposit which is held to apply on the last month's expenses. Plan VI, based upon a full calendar year, requires a contract deposit of \$25.00, payable upon admission.

** All figures on this page are based upon the average expense for boys. The average expense for girls is about \$40.00 per year less.

*** There are no fees for high school students, fees being charged for college courses only.



ACADEMIC REGULATIONS

ADMISSION REQUIREMENTS

The school is open to young men and women above the eighth grade, of good moral character and of reasonably sound health, who are willing to live in harmony with its principles and standards. While no religious test is applied, all are required to attend church services and to show proper respect for the Scriptures. It is distinctly understood that every student who applies for admission to the College thereby pledges himself to observe all its regulations. If this pledge is broken, it follows that by such infraction he forfeits his membership in the school, and is retained longer only by the forbearance of the faculty. It is also a part of the student's contract that he, to the best of his ability, will perform all the industrial duties assigned him.

It is not the policy of this school to give employment to any individual who is not registered as a student.

REGISTRATION

Registration begins Monday, September 4, 1939, at 9:00 a.m. It is highly desirable that all students enter at the beginning of the school year. Those who enter late frequently find difficulty in selecting a satisfactory program and in making up back work. Regulations governing students entering late will be found on page 24.

COLLEGE ENTRANCE REQUIREMENTS

Graduates of four-year accredited secondary schools presenting official transcripts will be granted entrance to the junior college courses, provided specific course requirements are met.

Graduates of unaccredited schools presenting official transcripts of at least sixteen acceptable units and meeting specific course requirements, may qualify by passing entrance examinations.

Students entering college are expected to possess a knowledge of the fundamentals of English. Those who upon examination prove deficient in this respect, will not be allowed to continue in the class in College Rhetoric unless they enroll also in the class in Introductory English, for which no credit is given but the regular charge for tuition is made. They must complete satisfactorily the latter course before they can receive credit for College Rhetoric.

TRANSCRIPTS

Students planning to enter this college for the first time should request the principals of schools previously attended, to send a transcript of all grades direct to the Registrar of Southern Junior College in ample time to be evaluated before the opening day of registration. Failure to do so may result in delayed registration and unsatisfactory classification.

Blanks for this purpose will be furnished upon request. All transcripts become the property of the school.

Upon the completion of a course, a statement of the final grade is issued without charge. If additional copies of the transcript are requested, there will be a charge of one dollar for each one issued.

Students who have not made satisfactory financial arrangements with the treasurer for the payment of their accounts, will not be permitted to write midyear or final examinations, nor will a diploma or grade transcript be issued until all school bills have been paid.

STUDENT LOAD

Four units each in grades nine and ten, and four and one-half units each in grades eleven and twelve of the College Preparatory Department, and thirty-two semester hours in the Collegiate Department, constitute full work for a school year of nine months. Requests for more than full work may be made to the Registrar, but not more than five units in the College Preparatory Department, nor thirty-six semester hours in the Collegiate Department will be allowed any student in an academic year of thirty-six weeks, nor will permission to carry extra work be granted to any student who has not maintained a B average in scholarship the preceding semester.

Students who must earn part of their expenses while in school should plan to deduct credit hours in proportion to the amount of labor performed each week.

Students who enter the College late will not be permitted to register for full school work.

CHANGES IN CLASS SCHEDULE

Students may change their program, upon approval, during the two weeks following registration.

COLLEGEDALE, TENNESSEE

A fee of one dollar must accompany a request for change of program after the first two weeks. The fee will be refunded if the request is denied.

No student shall enter or drop any class without presenting to the instructor of that class a permit from the Registrar. This permit must be countersigned by the instructor and returned by the student to the office of the Registrar. No student will be considered dropped from a class, and tuition will continue, until such a permit has been properly signed and returned. No grades will be recorded for a student who has not been properly registered in a course.

A course dropped without permission will be recorded on the permanent records as a failure.

A course dropped after the first nine weeks, unless on account of illness or other unavoidable circumstances, will be recorded as a failure.

ABSENCES AND EXCUSES

Regular attendance at all school appointments is expected of every student.

Because of the difficulty of making up lost work, permission to be absent from classes is given only for urgent reasons. Unexcused absences just before or after regular holidays will carry double penalty.

On the first day of his return to school, a student should present his excuse blank, properly signed, to the Registrar, for approval. Failure to present this blank by the close of the first day of attendance involves penalty of unexcused absence.

For three unexcused absences occurring in any one semester, students will be required to pay one dollar in cash, or to perform five hours of labor without compensation.

If the number of absences of a student from any class exceeds fifteen per cent of the total appointments for a semester, he will forfeit his grade in that class. The student may apply for exemption from this rule in case of serious illness or for other causes not under his control.

GRADE REPORTS

Reports of scholarship are made in duplicate to parents and students at the close of each school period of six weeks. All semester grades are permanently recorded by the College for future reference.

The following system of marking is used: A, superior; B, above average; C, average; D, below average; E, delayed credit; F, failure; W, honorable withdrawal; DW, dishonorable withdrawal. A passing grade in group work—such as orchestra and chorus—is recorded as a C.

Unless acceptable explanation, such as serious illness, can be given, a student whose work is reported unsatisfactory in two or more classes within any school period, may be asked to withdraw from school. In some cases reclassification may meet the emergency.

QUALITY POINTS

Three quality points are given for each semester hour or unit of credit for an A grade, two quality points for a B grade, and one quality point for a C grade. D grade carries no quality points. Students completing any junior college course of study must possess at least as many quality points as credit hours.

HONORS

College students whose record at the time of graduation shows no grade below B in regular class work, will be granted "Honors" diplomas.

CREDIT EVALUATION

A "unit" is defined as the amount of credit granted for one subject satisfactorily pursued during a year of thirty-six weeks, with forty-five-minute recitation periods, five days a week, or the equivalent.

A "semester hour" represents the credit granted when a subject is successfully pursued through a semester of eighteen weeks with one sixty-minute hour of recitation a week.

DELAYED CREDIT GRADES AND EXAMINATIONS

A student who redeems a delayed credit will receive a grade of D, unless otherwise voted by the faculty.

A delayed credit grade becomes a failure if not removed within one year.

A fee of one dollar is charged for all special examinations. Instructors may give such examinations only upon evidence of properly signed receipts.

AUDITING CLASSES

A student may audit a course only by special permission. No credit is given for courses audited; the tuition charge is one-half that of regular credit courses.

PHYSICAL EDUCATION

Each year a course in physical education is required of all students, except those excused by certificate of a physician.

CORRESPONDENCE WORK

Because of the position taken by the Southern Association of Colleges and Secondary Schools and by the State of Tennessee with respect to approved institutions accepting correspondence credits, Southern Junior College is not in position to accept such credits.

EXTENSION COURSES

Southern Junior College offers no extramural instruction; therefore, all work for which credit is given must be completed in residence.

EXTRA-CURRICULAR ACTIVITIES

The extent to which students may participate in extra-curricular activities is subject to definite regulation, in order to encourage students in maintaining satisfactory standards of scholarship.

REQUIREMENTS FOR GRADUATION

1. The minimum requirement for graduation from the College Preparatory department is sixteen units, part of which is prescribed and part of which is freely elective. Details of the courses offered may be found under the Summary of Courses. The minimum requirement for graduation from Junior College courses is sixty-six semester hours, including two hours of physical education.

2. Quality points equal to the number of semester hours of work covered will be required for graduation from any junior college course. These quality points are granted as follows: For a grade of A, three quality points; for a grade of B, two quality points; for a grade of C, one quality point; for grades below C, no quality points. College students must

maintain an average of C or better in order to be eligible for graduation. College Preparatory students must maintain an average of C in order to be recommended for college.

3. College students whose record at the time of graduation shows no grade below B in regular class work, will be granted "Honors" diplomas.

4. The year preceding a student's graduation must be spent in study at Southern Junior College. At least three units or twenty-four semester hours of credit must be earned in residence.

5. No credit toward graduation is given for one year of language.

6. Transcripts of all courses completed in other schools must be on file before a student's work can be checked for graduation. College entrance requirements must be met as a prerequisite for the completion of any college course.

7. Credit toward graduation will not be given for partially completed courses.

8. No student may enter the graduation class later than April 2.

9. All resident candidates for graduation must be members of the senior class.

10. Since the institution has but one graduation exercise a year, at the end of the winter session, candidates completing their requirements in the summer will be graduated the following spring.

JUNIORS

No student will be admitted to the junior class who will lack, upon completion of the classes for which he is then registered, more than five units or thirty-six hours of finishing his course.







COURSES OF INSTRUCTION

The following pages list the courses offered in the various departments of this College. Not all courses, however, are given each year. The number of recitations each week is the same as the number of hours of credit listed for each semester, unless otherwise stated. Courses bearing double numbers (like 1-2) are year courses, and must be continued throughout both semesters.

AGRICULTURE

1. Field Crops.

Includes a survey of the characteristics, adaptations, culture, and uses of the more important crop plants of the farm. **One semester. Three hours.**

2. Soils.

Includes origin, chemical and mechanical composition, and classification of soil material; soil, air, moisture, texture; effect of climate, organic matter, lime fertilizers, tillage, upon the physical properties of soils. General Chemistry should precede or parallel this course. **One semester. Three hours.**

BIOLOGY

1-2. Anatomy and Physiology.

Open to all college students but especially designed for students looking forward to nursing, dietetics, and home economics. The study includes the structure and functions of tissues, organs, and systems in the human body. Two hours recitation; three hours laboratory. **Two semesters. Six hours.**

3-4. Bacteriology.

A study of the fundamental principles of microbiology, introducing the control of disease; immunology; and serological procedures. **One hour recitation; three hours laboratory. Two semesters. Four hours.**

5-6. General Zoology.

An introduction to fundamental biological phenomena and principle; a thorough study of some typical invertebrates; and the comparative anatomy of vertebrates. Three hours recitation; four hours laboratory. **Two semesters. Eight hours.**

BUSINESS ADMINISTRATION

1-2. Accounting Principles.

Introduction to accounting; books of original entry; ledgers; trial balances; profit and loss statements; partnerships; corporations; business forms and papers; controlling accounts. Two hours recitation and three hours laboratory. **Two semesters. Six hours.**

3. Advanced Accounting.

A course in advanced theory of accounting. Problems of single entry; preparation of working papers, balance sheets, and profit and loss statements; advanced partnership and corporation problems; valuation of assets; depreciation; reserves and reserve funds; sinking funds; consignment and installment accounting. Prerequisite, Business Administration 1-2. **One semester. Three hours.**

4. Cost Accounting.

General principles and importance of cost records; classification of costs; job order and process accounting; accounting for materials, labor and manufacturing expense; preparation of analytical statements. Prerequisite: Business Administration 1-2. **One semester. Three hours.**

5. Principles of Economics.

A survey course in the fundamentals of economics; the institutions, forces, and factors affecting production, exchange, and distribution of wealth in modern industrial countries. **One semester. Three hours.**

6. Economic Problems.

A course dealing with some of the vital problems of modern economic life in connection with the concentration of industrial and labor power; public utilities; agriculture; money and banking, government finance; and foreign trade. Recent legislation in each of these fields is reviewed and analyzed. **One semester. Three hours.**

8. Consumer's Economics.

A course, open to the non-Business student, devoted to the analysis of economic institutions from the consumers' viewpoint. Particular attention is given to the relation of the consumer to advertising; adulteration of products; installment selling; monopolistic practices; government economic and revenue policies. The student is made familiar with various agencies for consumer protection. **One semester. Two hours.**

9. Business Law.

A survey course of the principles of law governing business transactions. Some of the subjects studied are contracts, agency, negotiable papers, partnerships, corporations, and sale of personal property. **One semester. Three hours.**

10. Business Management.

A survey course in the organization and management of a business enterprise. Study is given to the production and marketing of a product; the financing of a business; and the control of a business through budgets and the analysis of accounting data. **One semester. Three hours.**

COLLEGEDALE, TENNESSEE

11-12. Shorthand Principles.

A thorough study of the theory of Gregg Shorthand. A knowledge of this subject may be of value in at least four different ways: for taking notes of lectures, sermons, and class assignments; a mental drill; a stepping stone to a position such as that of editor, teacher, or business manager; or as a life work. Actual dictation and accurate transcription required at satisfactory speeds. Five recitations a week.

Two semesters. Eight hours.

13-14. Secretarial Practice.

A course designed for those who have mastered the principles of Gregg Shorthand. It is based on an activity program which provides practical experience in actual office problems. Particular attention is given to improvement in transcription and letter style; preparation of manuscripts and reports; filing; job analyses; and business ethics. Prerequisite: Business Administration 11-12.

Two semesters. Six hours.

15-16. Typewriting.

Theory and practice of touch typing is taught. Secretarial and business typing are studied and practised in required work. Mimeographing is given a prominent place in the course. Three recitations; five laboratory periods a week.

Two semesters. Four hours.

CHEMISTRY

1-2. Inorganic Chemistry.

An introduction to the elements and their principal compounds; the fundamental laws and accepted theories of chemistry. This course is designed to meet the needs of the premedical and science student. Three hours recitation; four hours laboratory.

Two semesters. Eight hours.

3. Qualitative Analysis.

A study of methods for the separation and identification of inorganic ions; analysis of several unknowns. One hour recitation; three hours laboratory. Prerequisite: Chemistry 1-2.

One semester. Two hours.

4. Quantitative Analysis.

This course includes the study of typical volumetric and gravimetric methods; quantitative determinations of acidity, alkalinity and percentage composition of a variety of unknowns. Prerequisite: Chemistry 3.

One semester. Two hours.

5-6. Organic Chemistry.

A survey of the aliphatic and aromatic compounds of carbon. The laboratory includes typical organic syntheses. Especially designed for premedical and science students. Two hours recitation; four hours laboratory. Prerequisite: Chemistry 1-2.

Two semesters. Six hours.

7-8. General Chemistry.

A survey course designed to familiarize the student with the basic principles of chemistry. Attention is given particularly to solutions, chemistry of nutrition, digestion, and metabolism. A course for students looking toward nurses' training. Two hours recitation; three hours laboratory. High School Chemistry is highly desirable.

Two semesters. Six hours.

EDUCATION

1. General Psychology.

An introduction to the study of the problems of human behavior and conduct, including the mental processes and their development. The aim of the course is to acquaint the student with the fundamental laws on which the educative process is based, and to open up to him the possibilities of scientific education.

One semester. Three hours.

2. Educational Psychology.

A continuation of Education 1, with special emphasis on the application of psychology to the problems of teaching, including such topics as motivation, learning, transfer, individual differences, and the measurement of achievement.

One semester. Three hours.

3. Introductory Geography.

A study of the mutual relationships between man and major elements of natural environment with special emphasis upon types of climate and some of the adjustments which man makes to climatic conditions in selected regions.

One semester. Three hours.

4. Geography of Europe.

A study of the physical environments and their relation to economic, political, and social developments in the various regions of Europe.

One semester. Three hours.

5. Principles of Education.

A study of the fundamental principles of the process of education, character building, and efficient citizenship.

One semester. Three hours.

7. Teaching of English.

A study of methods and materials essential to the successful teaching of three language arts: oral and written composition, spelling, and penmanship.

One semester. Three hours.

8. Teaching of Reading.

In this course a study is made of the problems involved in the teaching of reading in all grades of the elementary school. Some time will be devoted to a study of literature for children.

One semester. Three hours.

9. Teaching of Arithmetic.

A course dealing with the aims, principles, methods and materials involved in the successful teaching of arithmetic. An effort is made to bring each student up to a desired skill in the use of arithmetical principles and processes.

One semester. Two hours.

10. Teaching of Bible.

A study of subject matter and methods to be used in the teaching of the Bible to children in the elementary schools.

One semester. Two hours.

11. Technique of Teaching.

A course designed to give the prospective teacher a working knowledge of the principles and procedures of teaching in an elementary school. Opportunity is given for observation in the Training School.

One semester. Three hours.

12. School Hygiene.

This course is designed to familiarize the student with problems of hygiene in the school and the community.

One semester. Two hours.

14. Nature.

This course familiarizes the student with the nature materials of his immediate environment, and presents methods of making such material of vital interest in the life of the child.

One semester. Two hours.

16. School Music.

A course designed to prepare teachers to give instruction in music in the elementary grades. Consideration will be given the following topics: the child voice, rote songs, sight reading, treatment of monotonies, music appreciation.

One semester. Two hours.

17. Manual Arts.

This course presents methods of teaching sewing, cooking, and woodwork in grades five to eight.

One semester. Two hours.

18. Art.

A course designed to aid the teacher in presenting art instruction in the grades. Topics: free-hand pencil drawing, crayola work, cardboard construction, clay modeling, water colors, perspective, design, picture study, blackboard sketching.

One semester. Two hours.

19-20. Directed Teaching.

This course includes the teaching of classes in the Training School, the observation of lessons taught by the supervisors, the study and measurement of children as individuals and in groups, meeting with the supervisors of directed teaching and with the Director of the Training School.

Two semesters. Four hours.

ENGLISH LANGUAGE AND LITERATURE

1-2. College Rhetoric.

Intensive study of the fundamentals of English grammar and usage, the principles of effective composition, required outside reading and class study of literary models, regular practice in the writing of various types of themes.

At the end of the first six weeks of each semester, all students in this class must take a qualifying examination in English fundamentals, based on material that has been reviewed previously. Students who fail this examination are not allowed to continue in the class unless they enroll in the course in Introductory English. Credit for the semester's work in College Rhetoric will not be given until the student completes satisfactorily the course in Introductory English. **Two semesters. Six hours.**

3-4. Introductory English.

This course is required of those who prove deficient in the fundamentals of English grammar and usage, and are unable to attain the standard required for passing the course in College Rhetoric without more intensive drill than is provided in that course. The class meets two hours a week during the last eleven weeks of each semester. Students are allowed to add this course to a full program. Tuition is charged at the rate of one hour per semester, but no credit is given for the course.

5-6. Survey of English Literature.

A study of selected masterpieces and of the literary history by periods, authors, representative works, and literary types. Lectures, anthology, collateral reading, and class reports. **Two semesters. Six hours.**

7-8. Advanced Composition.

Advanced work in the special techniques of descriptive and expository writing, the essay, the preparation of manuscript for the press, and proof reading. **Two semesters. Four hours.**

HEALTH EDUCATION

1-2. Health Principles.

Fundamental, scientific laws governing health and hygiene, application of principles of health and personal hygiene in daily living habits.

Two semesters. Two hours.

3-4. History of Nursing.

Introduction of pre-nursing student to the long and splendid history of nursing and to the great leaders who have established its traditions and ideals; practical methods of studying with application to the mastery of the art of nursing—theory and practice.

Two semesters. Four hours.

5-6. Physical Education.

The purpose of this course is to familiarize the student with the fundamental principles governing the development and maintenance of a well poised physique; to correct certain anatomical defects prevalent among young people, and to provide an opportunity for wholesome recreation.

Two semesters. One hour.

HISTORY AND SOCIOLOGY

1-2. Survey of European History.

A general survey of the history of Europe from the Roman Empire to modern times, with major attention to the social, cultural, economic, and religious interests and movements. The decline and fall of Rome, the rise of the Papacy, the Holy Roman Empire, the crusades, the development of Western European nations, the Reformation, the French Revolution, and the World War with its results, will be studied. Lectures, reports, and parallel reading.

Two semesters. Six hours.

3-4. Survey of Ancient History.

A study of the historical background of the Old Testament in the light of the results of recent research and excavations in the valleys of the Nile, Euphrates, and Tigris rivers, which throw new light on historical hypotheses and confirm the Scriptural record. A brief survey is also made of the history and institutions of Greece.

Two semesters. Six hours.

5-6. Constitutional History.

This course traces the building with English and colonial elements of the basic principles of American government, the framing and adoption of the Federal Constitution, and its later development. Fundamental constitutional rights are considered. Lectures, reports, and parallel reading.

Two semesters. Two hours.

7-8. Contemporary Problems.

By class discussion and the use of current literature, this course will acquaint the student with the inter-relation and significance of the major events and movements of the present day.

Two semesters. Two hours.

9-10. American History.

This course traces the rise of America, with due emphasis upon the colonial background, and upon the great figures of early America. The outstanding events of each president's administration will receive careful attention. Lectures, reports, and parallel reading.

Two semesters. Six hours

12. Sociology.

A study of man's relation to society, dealing with such topics as the family, making a living, education, industry, and religion, and their influence in developing society.

One semester. Three hours

HOME ECONOMICS

1-2. Foods and Cookery I.

A study of the chemical and biological standards used in the selection, preparation and service of foods. Laboratory practice in the basic principles of cookery. Two hours recitation; three hours laboratory.

Two semesters. Six hours.

3-4. Clothing I.

An elementary course in selection and buying of clothing; fundamental principles of garment construction; color design; psychology of dress. Two hours recitation; three hours laboratory.

Two semesters. Six hours.

5. Household Economics.

A study of modern household equipment, marketing, budgeting and general home management.

One semester. Two hours.

LANGUAGES

1-2. Spanish I.

A foundation course in grammar, pronunciation, and reading designed to develop the ability to read and understand easy Spanish prose.

Two semesters. Eight hours.

3-4. Spanish II.

A course in which approximately two hours are devoted to a review of the fundamentals, with additional grammar and composition; two hours to the history of the politics, art, and literature of Spain; and two hours to the reading of standard works. With the exception of the work in grammar, the class discussions are carried on in Spanish.

Two semesters. Six hours.

5-6. French I.

A foundation course in grammar, pronunciation, phonetics, and reading, with a view to developing the ability to read and understand easy French prose and to carry on simple discussion.

Two semesters. Eight hours.

7-8. French II.

A course in the review of the fundamentals with additional grammar, composition, and reading of graded French books of increasing difficulty. Special emphasis is placed upon oral work. Provision is made for those majoring in science to do some of the required collateral reading in French scientific readers.

Two semesters. Six hours.

9-10. Greek I.

A thorough study of elementary New Testament Greek grammar, building a vocabulary, and the mastery of the regular verb. Special attention is given to the Greek participle. Extensive exercises in translation are required, and a portion of John's Gospel is read. Machen's "New Testament Greek for Beginners" is the basic text.

Two semesters. Eight hours.

11-12. Greek II.

A thorough grammar and vocabulary review, followed by the translation of I John and selected chapters in John, Revelation, Luke, and Acts. Constant parsing is required. Some problems of textual criticism are studied, and a familiarity is gained with the works of G. Adolph Deissman, A. T. Robertson, and others.

Two semesters. Six hours.

MATHEMATICS

1. Plane Trigonometry.

Trigonometric functions; solution of right and of oblique triangles by natural functions and by logarithms; graphic and analytic treatment of trigonometric functions, inverse and exponential functions; trigonometric identities and equations; applications to surveying, astronomy, mechanics, and navigation. Prerequisite: Geometry.

One semester. Three hours.

2. College Algebra.

The algebraic number system, including complex numbers; variations; rational functions of first, second, and higher degrees with geometrical interpretations; derivatives; maximum and minimum; theory of equations; partial fractions; linear systems and determinants; permutations, combinations, probability; conic sections; theory of exponents; exponentials; applications to physics. Prerequisite: Trigonometry.

One semester. Three hours.

3. Plane Analytical Geometry.

Rectangular, oblique and polar coordinates in the plane; the relation between a curve and its equation; the algebra of a pair of variables, and the geometry of a moving point; straight lines; conic sections, and certain other curves. Prerequisite: College Algebra.

Given on Demand.

One semester. Three hours.

4. Solid Analytical Geometry.

Rectangular and oblique coordinates in space; lines, planes, and surfaces of revolution. Prerequisite: Plane Analytics.

Given on Demand.

One semester. Three hours.

5. Differential Calculus.

Infinitesimals; variation; differentiation of algebraic and transcendental functions; interpretation of the successive derivatives with applications to physics; differentials; partial derivatives. Prerequisite: College Algebra.

Given on Demand.

One semester. Four hours.

6. Integral Calculus.

Integration of algebraic and transcendental functions; summation; geometrical and physical interpretation; series; successive integration; simple differential equations. Prerequisite: Differential Calculus.

Given on Demand.

One semester. Four hours.

MUSIC

1-2. Harmony and Composition.

Major and minor scales, intervals, primary and secondary triads in their inversions. The dominant seventh and its inversions, harmonizing melodies, the larger chord formations, supertonic harmony, modulations, and original work. At least one year of piano is prerequisite.

Two semesters. Six hours.

3-4. Counterpoint.

The association of two melodic lines, rhythmic diversity, two notes to each beat, modulations, three notes to each beat, syncopation, four notes to each beat, motive development, three and four part harmony. One year of piano is required before entrance.

Two semesters. Four hours.

5. Sightsinging.

Fundamentals of music, reading in all keys. Class meets two hours each week.

One semester. One hour.

6. Conducting.

Principles of conducting congregational music. Class meets two hours each week.

One semester. One hour.

7-8. History of Music.

This course deals with the development of music from its early beginnings to the present day. Music Appreciation will be woven into the class instruction.

Two semesters. Four hours.

Piano

Private instruction is adapted to the needs of each student. Graded course will be followed with examinations to cover prescribed work. Student recitals at frequent intervals.

Voice

Posture, correct breathing, diction, tone production, songs, interpretation.

Violin and Other Instruments

Instruction on the violin and wind instruments is also offered. Regular courses of instruction are followed.

COLLEGEDALE, TENNESSEE

Men's Chorus and Women's Chorus

Membership depends upon satisfactory audition with the director. Sacred songs of the better composers are used.

College Choir

A select group will comprise membership. Sacred songs for church use.

Orchestra

Membership for those who are able to play an instrument sufficiently well to be admitted. Two public programs each year.

Various musical ensembles function throughout the school term.

Applied Music Credit.

Piano, Voice, Violin, and Other Orchestral Instruments.

One semester hour for one lesson a week with four hours practice.

Two Semesters. Two hours.

Two semester hours for two lessons a week with eight hours practice.

Two Semesters. Four hours.

Music Organizations

One semester hour will be the maximum which may be earned in this field in one year, even though a student participate in more than one musical organization.

College credit will be granted only to those who, in the judgment of the music department head, have had sufficient background—a maximum of six hours in either applied or theoretical music, not more than ten hours in both.

The six hours of applied music may include credit for two hours in music organization. Not more than one hour may be earned in any one year.

All grades for group work in music will be recorded as C.

PHYSICS

1-2. General Physics.

An advanced study of the mechanics of solids, liquids, and gases; properties of matter and its internal forces; wave motion and sound; heat; magnetism; electrostatics; current electricity; alternating current theory; communication; radio activity; light. Three hours recitation; four hours laboratory. Prerequisite: Trigonometry. High School Physics is advised.

Two semesters. Eight hours.

3-4. Practical Electronics.

Fundamental electrical principles; alternating currents and high frequency; vacuum tube theory and design; fundamental vacuum tube circuits; radio receiver theory and design; transmitter theory and design; test instruments; fundamentals of cathode ray television; wave fundamentals and radiation; industrial and medical uses of vacuum tubes; relay applications. Prerequisite: High School Physics.

Given on Demand.

Two semesters. Four hours.

RELIGIOUS EDUCATION

1-2. The History and Message of the Old Testament.

A comprehensive historical survey, emphasizing the literary and spiritual values of the Old Testament, designed for those who have not had preparatory Bible.

Two semesters. Four hours.

3-4. The History and Message of the New Testament.

Similar to the preceding course except that the New Testament is studied.

Two semesters. Four hours.

5. Advanced Bible Doctrines.

Those doctrines of the Holy Scriptures are stressed which are vital to Christian experience and which distinguish Christianity from other religions. Emphasis is placed upon the ethical implications of religious belief. This course is especially valuable for those who plan to enter Christian service. Because of its advanced nature, a minimum of two years of preparatory Bible is highly desirable.

One semester. Three hours.

6. Advanced Bible Doctrines.

A continuation of the preceding course.

One semester. Three hours.

7. Daniel.

This Old Testament apocalypse is studied verse by verse to get the lessons applicable to the present day. Unrestricted class-discussion of all points is encouraged. Considerable attention is given to the Introduction; modern theories regarding the time, place, and authorship of the book are evaluated in the light of the best recent scholarship. This course offers an excellent opportunity for students to learn and apply correct methods of historical research.

One semester. Two hours.

8. Revelation.

The Book of Revelation is studied in its entirety. Correct methods of interpretation are stressed; its deep spiritual values are searched and applied. Due emphasis is placed on those fundamental truths of the book which have always been prominent in the characteristic message of Seventh-day Adventists. There is cultivated a reverent and scholarly reserve regarding the exact details of unfulfilled prophecy, and an attitude of Christian tolerance toward those who hold varying opinions regarding non-essentials.

One semester. Two hours.

SPEECH

1. Public Speaking.

The development of personal power through oral interpretation of masterpieces of literature, and through preparation and delivery of addresses; correction of mannerisms; development of effective mental, physical, and vocal habits of speaking and reading.

One semester. Two hours.

COLLEGEDALE, TENNESSEE

2. Public Speaking.

A continuation of the preceding course, which is prerequisite to this.

One semester. Two hours.

3-4. Expression.

This work is planned with a two-fold purpose: The first is the development of the speaking voice for private as well as public conversation; the second is the development of technique in voice, gesture, and poise for platform and public reading.

Breath control, musical quality of voice and tone, systematic training for careful articulation, audibility, volume, reading of verse and prose, are some of the fundamentals in this course.

At least one formal night recital is held each semester.

Two semesters. No credit.

SUMMARY OF CURRICULUMS

ASSOCIATE IN ARTS

First Year

	Hours of Credit	
	First Semester	Second Semester
Rhetoric.....	3	3
Language.....	4	4
Survey of European History.....	3	3
Religious Education.....	3	3
Science.....	3	3
Physical Education.....	½	½

Second Year

Language.....	3	3
Religious Education.....	2	2
Physical Education.....	½	½
◆Electives	11	11

Students who are preparing for the ministry, or who are planning to complete a four-year Liberal Arts Curriculum with majors in English, history, or language, should register in the Associate in Arts Curriculum.

At the time of registration, students will be guided in the choice of electives by counsel with the Registrar and the teachers concerned.

Students presenting credit for two years of high school French or Spanish need take only one additional year in the same language.

Students having two years of ancient language only, will take two years of modern language.

◆ The student is required to select at least one six-hour course from the following group: History, survey of English literature, economics, psychology, principles of education.

◆ In addition to the science studied during the first year, the student is required to select six hours of work from the following group: General chemistry, zoology, physiology, mathematics, physics, organic chemistry, bacteriology. It is recommended that the student's total work in science include one full year course of at least six hours in each of two of the following broad fields: Biological science, physical science, mathematics. It is generally advisable for the student to select a further six hours from one of the foregoing groups.

◆ Special permission may be granted for a different selection of electives. As a general rule, however, such permission should not be granted to students who plan to attend a senior college and finish a course in the arts and sciences. Such permission may be granted for definite reasons to those students who do not plan to proceed beyond the fourteenth grade.

BUSINESS ADMINISTRATION

First Year

	Hours of Credit	
	First Semester	Second Semester
Rhetoric.....	3	3
Religious Education.....	2	2
Accounting Principles.....	3	3
Shorthand Principles.....	4	4
Typewriting.....	2	2
Economics.....	3	3
Physical Education.....	½	½

Second Year

Religious Education.....	3	3
Advanced Accounting.....	3	
Cost Accounting.....		3
Business Law.....	3	
Business Management.....		3
Psychology.....	3	
Consumers' Economics.....		2
Secretarial Practice.....	3	3
Electives.....		2
Physical Education.....	½	½

Students who are not interested in secretarial work may, with the consent of the Registrar, substitute electives for shorthand and secretarial practice.

Students who are not interested in accounting may substitute electives for advanced accounting, cost accounting, and business management.

ELEMENTARY TEACHER TRAINING

First Year

	Hours of Credit	
	First Semester	Second Semester
Rhetoric.....	3	3
Religious Education (Daniel and Revelation).....	2	2
Physiology.....	3	3
Principles of Education.....	3	
Teaching of Reading.....		3
Teaching of Arithmetic.....	2	
Art.....		2
Geography.....	3	3
Penmanship.....		
Physical Education.....	½	½

Second Year

General Psychology.....	3	
Educational Psychology.....		3
History.....	3	3
Technique of Teaching.....	3	
Teaching of English.....	3	
School Hygiene.....		2
Teaching of Bible.....		2
Nature.....		2
Manual Arts.....	2	
School Music.....		2
Directed Teaching.....	1-2	2-3
Physical Education.....	½	½

DENOMINATIONAL CERTIFICATION

A student finishing the teacher-training curriculum as outlined, is granted a diploma and, upon recommendation of the director of teacher-training, will receive a professional certificate valid for five years. A graduate holding this diploma and certificate may, after three years' teaching, receive a life certificate, provided his teaching has been satisfactory, and the Union Conference secretary in whose territory the teaching has been done so recommends.

COLLEGEDALE, TENNESSEE

MUSIC

First Year

	Hours of Credit	
	First Semester	Second Semester
Rhetoric.....	3	3
Language.....	4	4
Harmony.....	3	3
Sightsinging.....	1	
Conducting.....		1
Applied Music.....	5	5
Physical Education.....	$\frac{1}{2}$	$\frac{1}{2}$

Second Year

Religious Education.....	3	3
Language.....	3	3
Counterpoint.....	2	2
History of Music and Music Appreciation.....	2	2
Methods in Music.....	1	1
Applied Music.....	5	5
Physical Education.....	$\frac{1}{2}$	$\frac{1}{2}$

Students presenting credit for two years of high school French or Spanish need take in college only one additional year in the same.

Students having two years of ancient language only, will take two years of modern language.

Students majoring in music are required to take two lessons a week with two and one-half hours' practice a day.

SOUTHERN JUNIOR COLLEGE

SCIENCE

First Year

	Hours of Credit	
	First Semester	Second Semester
Rhetoric.....	3	3
Religious Education.....	2	2
Chemistry.....	4	4
Mathematics or Science Electives.....	3-5	3-5
Electives other than Science.....	1-4	1-4
Physical Education.....	½	½

Second Year

Religious Education.....	2	2
Organic Chemistry.....	3	3
Science Electives.....	8	8
Electives other than Science.....	3	3
Physical Education.....	½	½

Students who are preparing for medicine, dentistry, nursing, dietetics or home economics, and science majors, should register in the Science Curriculum.

Students preparing for medicine will elect mathematics, six hours; zoology, eight hours; physics, eight hours; constitutional history, two hours.

Pre-medical students having no foreign language credit must take fifteen hours in French and present seventy-three semester hours of credit for graduation.

Students presenting credit for two years of high-school French or Spanish need take in college only one additional year in the same.

Students having two years of ancient language only, will take two years of modern language.

Students preparing for nursing will elect physiology, six hours; bacteriology, four hours; history of nursing, four hours; health principles, two hours.

Students preparing for dietetics will elect constitutional history, two hours; economics, three hours; foods and dietetics, six hours; physiology, six hours; principles of education, three hours; psychology, three hours; sociology, three hours, accounting, three hours.

Southern Junior College

Preparatory School

1939-1940

ACCREDITED WITH

Tennessee Department of Education

Seventh-day Adventist Board of Regents

Southern Association of Colleges and Secondary Schools

COLLEGE PREPARATORY SCHOOL

There is maintained as a separate department of the College a preparatory school corresponding to the four years of the standard high school. Students who are admitted to the College departments must complete a preparatory course as outlined below, or must present evidence that they have completed a four-year course in an accredited high school. Students whose preparatory work has been taken in un-accredited schools will be required to write entrance examinations as prescribed by the College.

BIBLE

Bible I—Early Church History.

A connected study of the life of Christ as set forth in the four gospels, and the study of the history of the early Christian church as given in the Acts of the Apostles.

Two semesters. One unit.

Bible II—Ancient Hebrew History.

Deals with the history and literature of the Hebrew race from creation to the end of the Babylonian captivity, as set forth in the Old Testament Scriptures.

Two semesters. One unit.

Bible III—Denominational History and Christian Ethics.

An elementary study of the great epochs and movements of church history, with special attention to the rise and development of the Seventh-day Adventist denomination, followed by a study of social ethics from the Christian viewpoint. Mrs. E. G. White's "Messages to Young People" is the basis of this latter work.

Two semesters. One-half unit.

Bible IV—Bible Doctrines.

Sets before the student a clear, concise outline of the fundamental doctrines of the Bible. Special attention is given to the unity or harmony of the doctrines taught in both the Old and the New Testament.

Two semesters. One-half unit.

COMMERCE

Bookkeeping.

This course begins with the rudiments of the subject, and develops step by step into double-entry bookkeeping. The pupil becomes familiar with the use of receipts, checks, notes, drafts, and invoices. He learns how to journalize and explain transactions; to post from journal and cash book to ledger; to take trial balances; to make out financial statements; and to close and rule ledger accounts. Five recitations, five laboratory periods.

Two semesters. One unit.

COLLEGEDALE, TENNESSEE

General Business.

A course in general business training designed to yield the following outcomes: ability to handle personal business affairs; more satisfactory choice of a vocation; preparation for vocational study; try-out and exploratory experiences; social understanding; and civic intelligence.

Two semesters. One unit.

Typewriting.

Theory and practice of touch typing is taught. Secretarial typing is studied in detail. Five recitations, five laboratory periods.

Two semesters. One unit.

ENGLISH

English I.

A review of English grammar, drill in correct English habits, the fundamentals of composition, frequent themes and speeches, class study of selected literary classics, and cultivation of the habit of reading worth-while books. Six lessons in the use of the library are included.

Two semesters. One unit.

English II.

A continuation of English I with the work more advanced in character. Six more lessons in the use of the library are included.

Two semesters. One unit.

English III.

The work in English III is devoted to the field of English literature, to oral composition, and to the elimination of fundamental errors in the use of language. Collateral reading is required.

Two semesters. One unit.

English IV.

The greater part of this course is devoted to American literature with an outline survey of its history. The remainder is given to an advanced study of grammar and language structure, and oral composition. Collateral reading is required.

Two semesters. One unit.

HISTORY

World History.

This course is required of all students in the College Preparatory Curriculum. The aim is to introduce the student to a historical view of life. The great characters and movements of world history will be evaluated from the Christian point of view.

Two semesters. One unit.

American History and Problems of Democracy.

Consideration will be given to the important phases of our colonial and national governments, the principles upon which they were founded, the relations and functions of their various departments, and our individual duties and privileges as American citizens.

Two semesters. One unit.

HOME ECONOMICS

Home Economics I.

The house, its selection and care; home courtesies; personal grooming; selection and care of clothing; construction of simple garments; the normal diet; preparation and serving of breakfasts, suppers, and luncheons. Five double periods a week.

Two semesters. One unit.

Home Economics II.

The planning, preparation and serving of dinner; budgets and accounts; financing and care of the home; construction of an afternoon and a tailored dress; child care, invalid cookery. Five double periods a week

Two semesters. One unit.

INDUSTRIAL ARTS

Agriculture I.

This course includes recitations, lectures, supervised study, and general laboratory and field work. The subject matter of the first unit includes dairying, small fruit and vegetable gardening. The course affords practice in milk-testing and in judging dairy cows. Note books must be kept in which laboratory and field work is reported. Five double periods a week.

Two semesters. One unit.

Agriculture II.

The subject matter of this course includes field crops, animal husbandry, and poultry. Laboratory work will include seed selection, seed-testing, grading and inoculation, judging stock and poultry. Note books will be required. Five double periods a week.

Two semesters. One unit.

Manual Training I.

Includes drafting, cabinet work, and wood turning. Drafting: The use and care of drafting room equipment, lettering, conventions, projection drawings, and the making of blue prints. Cabinet work: The work will consist of some simple models involving the elements of joinery, besides a more elaborate piece of furniture which has been designed by the student and made from his own drawings. Wood turning: Simple spindle and face-plate turning including table legs, candlesticks, and trays.

Two semesters. One unit.

Manual Training II.

Continues the work of Manual Training I with the addition of simple carpentry. Drafting: Projection drawing, including sections and developments, isometric drawing, and plans and elevations for a simple building. Cabinet work: More difficult projects will be undertaken by students of the second year. Working drawings must be made by the student of all projects to be made in the shop. Wood turning: Advanced projects in face-plate turning, spindle turning, and projects involving the use of the chuck. Carpentry: Simple roof construction, window framing door construction, stair building, uses of the steel square, a brief study of lumbering, and estimating quantities and costs.

Two semesters. One unit.

COLLEGEDALE, TENNESSEE

Printing I.

A study of general principles, including proof reading, type calculations, straight hand and job composition. The laboratory work will consist of hand composition, with an introduction to the feeding of platen presses. It is expected that the student will develop speed and accuracy in composition work. Five double periods a week.

Two semesters. One unit.

Printing II.

Composition of advertising, advanced job composition, a careful study of the care and operation of the platen press, locking up forms, imposition. The student is required to develop a satisfactory degree of speed and accuracy in platen press work. Five double periods a week.

Two semesters. One unit.

LANGUAGES

Latin I.

A beginner's course in Latin. Drill in vocabulary, grammar, and syntax. Translation from English to Latin and Latin to English. Emphasis is placed upon the relation between the Latin and English.

Two semesters. One unit.

Latin II.

The early part of the course is devoted to a review of principles of Latin I. Translation and drill in syntax.

Two semesters. One unit.

Spanish I.

A beginner's course, with drill in grammar, principles of pronunciation, and easy reading.

Two semesters. One unit.

Spanish II.

Review of fundamental principles, intermediate Spanish reading, and composition.

Two semesters. One unit.

MATHEMATICS

Algebra I.

Prerequisite, the completion of eighth grade arithmetic. Fundamental operations integral equations; factoring, fractions; simultaneous equations with graphs; involution and evolution; theory of exponents; quadratics.

Two semesters. One unit.

Algebra II.

A rapid review of the principles of algebra I; continuation of algebra to include surds, simultaneous quadratics, progressions, logarithms, infinite series, binomial theorem, permutations and combinations.

Two semesters. One unit.

Plane Geometry.

Prerequisite: algebra I. The five books of plane geometry are covered thoroughly. A large number of original problems is required. Close attention is given to the logical development of every proof, and special emphasis is placed upon individual reasoning.

Two semesters. One unit.

MUSIC

Students who desire may select music as an elective in the College Preparatory Curriculum, but not more than two units will be accepted toward graduation. For credit in Music 1 in the College Preparatory Curriculum, the student must complete the following:

(a) Applied Music: Upon recommendation of the music director, a student may receive credit for piano, voice, or violin. A voice and violin student must have the equivalent of one year of piano, or be required to study piano during his Music 1 course.

(b) Music Theory: Four forty-five minute periods a week for thirty-six weeks. Music fundamentals and harmony.

(c) Either Orchestra or Chorus: One period of at least forty-five minutes a week for thirty-six weeks.

For credit in Music II in the College Preparatory Curriculum, the student must complete the following:

(a) Applied Music: An additional year of piano, voice, or violin—one lesson each week.

(b) Music Appreciation and History: Four forty-five minute periods a week for eighteen weeks. Harmony the second semester.

(c) Either Orchestra or Chorus: Two periods a week for thirty-six weeks.

SCIENCE

Biology.

The course in biology includes a study of the leading divisions in the animal and the plant kingdom. An intensive study is made of typical representatives, and a more general study of related forms, with a view to discovering the chief characteristics of each division. The morphology and physiology of plants is stressed, and extensive experimental and microscopic work is required. In zoology a fairly complete life history of each type studied is presented, and includes: food habits, mode of locomotion, sense organs and nervous system, processes of digestion, circulation and respiration, environmental relationships. The adaptation of plants and animals to their surroundings is stressed throughout the course. Three recitations, two laboratory periods a week.

Two semesters. One unit.



COLLEGEDALE, TENNESSEE

Chemistry I.

This course should be elected by those students who plan to take nurse's training. An elementary course covering the chemistry of the common non-metallic elements, fundamental theories and laws of chemistry. Introduction to the chemistry of the common metals and their compounds. Three recitations, two laboratory periods a week.

Two semesters. One unit.

Physics I.

Prerequisite: algebra and plane geometry. This course is introductory to general physics, and consists of recitations, laboratory work, and classroom demonstration. The mechanics of fluids and solids, heat, molecular physics, sound, light, magnetism, and electricity are studied. Three recitations, two laboratory periods a week.

Two semesters. One unit.



COLLEGE PREPARATORY CURRICULUM

Grade Nine

English I	1
Algebra I	1
Biology	1
Early Church History	1

Grade Ten

English II	1
World History	1
Ancient Hebrew History	1
Elect one unit:	
*Home Economics	1
Manual Training I	1
Algebra II	1
Music I	1
Agriculture	1

Grade Eleven

English III	1
Language I	1
Geometry	1
Bible III	½
Elect one unit:	
Home Economics II	1
Manual Training II	1
Music I or II	1
Printing I	1
Bookkeeping	1
General Business	1
Chemistry	1
Physics	1
Typewriting	1
Agriculture I or II	1

Grade Twelve

English IV	1
Language II	1
American History and Problems of Democracy	1
Bible IV	½
Elect one unit:	
Bookkeeping	1
General Business	1
Chemistry	1
Physics	1
Home Economics II	1
Agriculture I or II	1
Music I or II	1
Printing II	1

*Required of girls.

Physical Education is required each year.

COLLEGEDALE, TENNESSEE

It is essential that students make a careful selection of the elective courses which form a part of the College Preparatory Curriculum. The student should determine, if possible, by the beginning of the third year what his life work is to be, so that at the time of registration he can be advised what electives to choose in order to coordinate properly his preparatory course with the college work which he may plan to take later.

Students who do not seek college entrance may obtain a diploma upon completion of a curriculum of not fewer than seventeen units, of which four must be English. Electives may be selected from a wide range under counsel of the Registrar.



SOUTHERN JUNIOR COLLEGE ALUMNI

Collegiate			
		Dart, Ethel May	1927
		Daughtrey, Edwin Fay	1937
		Davis, Doris	1938
Aebersold, Charles	1938	Deaux, Margaret Elizabeth	1936
Ashlock, J. Franklin	1925	Deaux, Walter E.	1937
Artress, Lenore	1938	Dickerson, Lottie Gertrude	1930
Baessler, Doris	1938	Dobbs, Joseph	1931
Banks, Edward C.	1931	Duge, John Frederick	1931
Bartlett, Martha Minnick	1925	Dunham, Evelin Esther	1936
Bascom, Lewis A.	1930	Eldridge, Elaine Yeast-	1926
Beck, Ruth	1938	Elmore, Vincent M. Jr.	1930
Bee, Clifford	1929	Ferree, Nellie	1928
Bell, Eunice	1938	Field, Clarence S.	1920
Benjamin, Bruce Thomas	1933	Fields, Grace	1938
Bird, Elena Roberta	1936	Finley, Coralee C. Russell-	1930
Bird, Ellen Gould	1923	Flanagan, Laurene Allee	1929
Bird, Martin	1938	Ford, Carroll	1938
Bishop, Forest L.	1927	Foshee, Earline	1930
Black, Blanche Ann	1936	Fox, Lorene Estelle Furches-	1925
Bonner, Mary Grace	1925	Franklin, Joseph Warren	1927
Botimer, Clare	1926	Franz, Clyde O.	1932
Boyd, Maurine Shaw	1927	Franz, Lois May Clark-	1934
Boykin, Charlie A.	1928	Fuller, Frederick E	1923
Boynton, Paul	1938	Fuller, George Newton	1925
Bradley, Millard C.	1928	Gardner, William	1938
Bradley, Mildred Emanuel-	1925	Gartley, Mary	1931
Brizendine, Lucille	1937	Gibbs, Bernice Audrey Hollister-	1924
Brooke, Frances Ann	1936	Goddard, Eber Roland	1922
Brown, Letha Litchfield-	1921	Goodbrad, John	1938
Brown, M. Gordon	1926	Hackleman, Thomas	1938
Brown, Maxine	1936	Hale, Georgia	1937
Bruce, Minnie Sue	1938	Hall, Albert N.	1935
Bruce, Miriam	1926	Hall, J. Thomas	1934
Burdick, J. Gordon, Jr.	1936	Hammond, Paul	1926
Burke, Thyra Doreen	1929	Harding, Leta Leon	1934
Butterfield, Leslie A.	1928	Hassenpflug, Edward	1931
Byers, Lowell H.	1935	Heacock, Loretta Ellen	1924
Carter, Minnie Lee	1930	Hendershot, Paul K.	1936
Chambers, Dorothy Arline	1931	Herin, Mazie Alice	1937
Chambers, James Richard	1936	Holland, James Carol	1925
Clark, Lucile Cherrie White-	1927	Hoskins, Lea Lucille	1930
Clark, Walter B.	1927	Hunter, Donald Walter	1924
Cleaves, Richard	1938	Hutsell, Dorothy Ray	1937
Collins, Lettie Sibley	1935	Huxtable, Thomas R.	1922
Cooper, James Lamar	1923	Inabinet, Julia E.	1922
Corrigan, Joseph, Jr.	1931	Ingram, Ellen Elizabeth	1930
Cowdrick, Elizabeth	1923	Ingram, Martyn Clarice	1936
Cowdrick, Jesse Stanton	1925	Ingram, Ruth	1931
Cowdrick, Mary	1938	Jaeger, Euphemia Macaulay-	1921
Cowdrick, Robert E.	1923	Jansen, John Muller	1927
Crofoot, Kenneth Stanley	1936	Johnson, Beulah Beatrice	1928
Crouch, Joy Ollie	1937	Johnson, Frankie	1933
Crowder, Ivan T.	1937	Johnson, Jewell B.	1931
Cruise, Joseph S.	1936	Jones, Thelma	1926

SOUTHERN JUNIOR COLLEGE

Austin, James E.	1937	Covington, Edythe Viola	1937
Backus, James T.	1931	Cowdrick, Mary Ruth	1933
Barnes, Bertram B.	1937	Crabtree, Ira Russell	1936
Barrow, Marguerite	1931	Crittenden, Lona M.	1935
Barto, Leonard W.	1932	Crowder, Henderson M.	1935
Beaty, Patsy Louise	1930	Crowder, Katharyn Anderson	1926
Beauchamp, Bernice Inez	1930	Cruise, Joseph A.	1934
Bez, Clifford	1926	Currey, Lillian Louisa	1927
Bender, Thomas William	1928	Curtis, Glenn	1918
Benjamin, Lois Ruth	1934	Curtis, Helen L.	1923
Bird, Ellen Gould	1921	Dart, Merrill Oren	1925
Bird, Elena Roberta	1934	Davis, Dorothy Avaleen	1936
Boswell Frances Thelma	1933	Davis, Eloise Hoskins-	1918
Botimer, Clare	1925	Davis, Lester S.	1927
Botimer, Christel Kalar-	1922	Davis, Lyda Ruth Leach-	1926
Bowen, Emory Earl	1937	Davis, Pearl Owen	1936
Bowen, Lyria Pauline Tutton-	1937	Deyo, Ruth	1927
Boyd, Talmadge	1927	Dickerson, Lottie Gertrude	1928
Boyd, Vivian	1931	Dickerson, Marjorie E. Riggs-	1931
Boykin, Helen Watts-	1929	Dickman, Lyda Mae	1933
Boynton, Paul C.	1937	Dillard, Eugene	1937
Boynton, Ruby Jean	1937	Dobbs, Joseph D.	1930
Braddock, Bertha Lee	1936	Doering, Klarissa	1929
Braddock, H. A. Jr.	1930	Dortch, Virginia Veach-	1928
Braddock, Jennie Clarke-	1928	Douglas, William Wesley, Jr.	1936
Bradley, Mildred Emanuel-	1923	Dunham, Evelin Esther	1929
Bradley, Walter Hoffman	1924	Dunham, Gerald Oscar	1932
Brooke, Maude M.	1922	East, Mabel Ovella	1936
Brown, Lula Hilda	1921	Edgmon, Eunice	1938
Burdick, J. Gordon, Jr.	1934	Edmister, Melvin H.	1937
Burke, Thyra Doreen	1927	Edwards, Bernard Elmo	1931
Burtz, India Virginia	1929	Egger, Selma	1931
Bush, Percy	1938	Ellis, Helen Mae	1929
Byrd, Arthur	1925	Elmore, Winona Hawthorne	1932
Carter, Minnie Lee	1927	Farley, Mary Earle	1923
Case, Alice T.	1920	Ficklen, Beatrice Ardell	1931
Casey, Lillian Emerson-	1918	Field, Clarence S.	1918
Chambers, Alma Clyde	1936	Fields, Grace Louise	1936
Chambers, Dorothy Arline	1929	Fields, Marjorie Lucile	1929
Chambers, James Richard	1933	Finley, Coralee, C. Russell	1929
Chambers, Katherine Viola	1937	Finley, Josephine Hautense	1929
Chapman, Grace Coppage-	1927	Foley, Dayton	1936
Chapman, Opal Lee	1934	Foley, M. Elaine	1934
Chapman, Vaughtie Elizabeth	1934	Ford, Robert R.	1930
Clark, Lucile Cherie White-	1924	Foster, Minard Irwin	1931
Clark, Walter B.	1925	Fountain, Katie Mae	1924
Clymer, Irma Halliday-	1921	Frank, Belva Grace	1934
Cobb, Maybelle Harrold-	1929	Franklin, Joseph Warren	1920
Coggin, Bonnie Catherine	1930	Franz, Mildred Elizabeth	1933
Coggin, Charles Benjamin	1925	French, Richard C.	1930
Coggin, Nanette McDonald-	1925	Freeze, Opal Augusta	1934
Cone, Robert Lincoln	1936	Friberg, August	1926
Conger, Jake R.	1919	Fuller, Frederick E.-	1921
Cooksey, Annie Bird-	1925	Gardiner, Zoe Schreve-	1918
Coolidge, W. Everett	1935	Gartley, Carey	1931

COLLEGEDALE, TENNESSEE

Gatlin, Mary	1921	Johnson, Jewell	1928
Gattis, Alice Lillian	1928	Johnson, Oscar	1920
Geeting, Tiny Violet Priest-	1925	Jorgensen, Mamie Jones-	1920
Gibbs, Bernice Audree Hollister-	1923	Jones, Gertrude Louise	1929
Goodbrad, Burgess	1938	Kalar, Addie May	1917
Goodbrad, John	1935	Kenny, E. Fisher	1928
Gordon, James L.	1920	Kenny, Edna May Carlisle-	1928
Gosnel, Mable Viola	1929	Kenny, E. Levon	1929
Grant, Sara Jean	1936	Killen, Nobia Allen	1921
Graves, Cecil F.	1923	King, Eleanor Winnogene	1927
Graves, Lucile Whiteneck-	1922	King, Elmer R.	1929
Groth, Wilber H.	1930	King, Elton B.	1927
Groth, Evelyn Vivian	1931	King, Ruby B.	1932
Guenterburg, Bernard	1926	King, Ruth L.	1934
Haddad, Simonne	1934	Kjos, Emma M.	1932
Hair, Martha Ivy	1930	Klooster, Carol Evelyn	1937
Hall, Albert N.	1932	Kneeland, Ruth Evelyn	1929
Hall, Novella Mae Orenduff-	1933	Knight, Paul	1938
Hall, Thomas	1930	Kuester, William E.	1927
Hampton, Lucile	1926	Lambert, John Letson	1927
Harding, Leta Leon	1932	Lawson, Ida Marguerite Moore-	1930
Hayes, J. W.	1922	Leach, Paul H.	1924
Hayward, Joseph Clausen	1928	Leach, Virginia Ann	1927
Harvey, Roberta	1928	Linderman, Mary Evelyn	1937
Hazelton, La Vanne	1928	Lilly, Gladys Alois	1925
Hendershot, Hoyt V.	1937	Lilly, Lewie John	1925
Hendershot, Paul Kenneth	1929	Lockamy, Ollie Mae	1936
Hickman, Bobbie Louise	1932	Loftin, Evelina	1936
Hickman, James Wesley, Jr.	1936	Lohr, Metha Welma	1921
Hilderbrandt, Henry	1937	Lorren, Cloie Ashby	1931
Hilderbrandt, Mildred	1930	Lorren, Felton	1930
Hines, Ruth	1938	Lorren, Robert Eddie	1929
Hogan, Charles A.	1932	Lorren, Ruby L.	1932
Holland, James Carl	1923	Lorren, Thos. Alton	1929
Hollar, Richard Lee	1927	Lorren, Vivian Etherton-	1929
Home, Earline Taylor-	1929	Louis, Carolyn	1927
Horne, Herbert Nicholas	1927	Loyd, Monroe F.	1928
Hughes, Evan	1938	Lucas, Susannah H.	1934
Hughes, Mamie Jane Songer-	1929	Ludington, Louis	1938
Hubbell, Alfred	1926	Lundquist, Ellen H.	1932
Hust, Mildred M.	1937	Lundquist, Lorene Clark-	1925
Huxtable, Mildred Evelyn	1937	Lundquist, Eric	1928
Inabinet, Julia E.	1920	Luttrell, Margie Pauline	1930
Ingram, Ellen	1928	Lysinger, H. Peirce	1937
Ingram, Martyn Clarise	1933	Maddox, Nellie Lee Henderson-	1924
Ingram, Ruth Marguerite	1929	Maiden, Frances	1931
Jacobs, Carl L.	1927	Maiden, Roger Mae	1933
Jacobs, Ray Lester	1937	Manous, N. Levern	1931
Jameson, Maisie White-	1918	Marshall, Minna H.	1930
Jameson, Violo Hervey	1931	Martin, Cecil Branson-	1920
Jansen, John Muller	1925	Mashburn, Mary Ellen	1929
Jensen, Mabel Graves-	1924	Maxwell, Daisie Quinnette	1935
Johnson, Adde	1925	Medford, Menton Amos	1934
Johnson, Beulah Beatrice	1926	Meister, Rose A.	1920
Johnson, Frankie	1933	Meyer, Cleo Adams	1926

SOUTHERN JUNIOR COLLEGE

Miller, Dora	1928	Porter, Elizabeth Ewell Bell-	1931
Mills, George	1938	Porter, Grace M.	1924
Minnick, S. Fulton	1924	Porter, Forrest Fred	1927
Minnick, Martha Harrold-	1924	Price, Rolland Ray	1935
Mitchell, Eleanor Ruth	1937	Purdie, Gladys Alma	1937
Moore, Mary E.	1935	Rainwater, Alberta Reiber-	1927
Morgan, Bessie Lee	1920	Randall, Anna Marjorie	1930
Morrow, Irmie Lee	1930	Randall, Carol Christian	1926
Mouchon, Dorothy Peppers-	1927	Randall, Shirley Louise Ashton-	1933
Mulford, Eileen Fern	1931	Randall, Winslow	1924
Mulholland, Mabel Branson-	1920	Ray, Willard Franklin	1924
Mulliken, Ethel L.	1920	Raymond, Ralph	1917
Murphy, Rosalind Fae	1928	Reese, Henry Lionel, Jr.	1931
Murrell, Mae B.	1926	Reiber, Evelyn	1926
McBrayer, Ruth	1926	Reiber, Marian S.	1935
McCaughan, Virginia	1926	Reiber, Verlie Norma	1936
McClure, Carolyn	1930	Richardson, Jeanette Harriet	1921
McClure, Edith Bird-	1928	Richey, Dorothy	1938
McGhie, Audley H.	1928	Rilea, Florence Bird	1931
McKee, A. D.	1927	Ritter, Mildred M.	1932
McKee, Jeanetta M. Hardin-	1920	Rogers, Samuel Earl	1924
McKee, Oather Dorris	1927	Rogers, Verna McRae-	1924
McLennan, Sanford Horton	1928	Romans, Carl F.	1935
McNett, Viola Leone	1928	Rottmiller, Carol	1938
McSwain, Ninette E.	1931	Ruskjer, Violet Evangeline	1935
Nall, Nansie Christine	1925	Russell, Eva	1919
Nethery, Ronald Jay	1927	Rutledge, Christine	1937
Nethery, Raymond	1928	Rutledge, Dorothy Ellen	1933
Newton, Ruth Louzene	1927	Sammer, Harold H.	1927
Nix, Edna Cleo	1936	Sarrett, Annie Lou	1923
Nordan, Nancy Elizabeth	1937	Sarrett, Polly	1926
Null, Gladys Lavinia	1930	Savelle, Velma	1929
Oakes, Grantham	1937	Savelle, Walter Carlyle	1937
O'Brien, Thelma Wallace-	1925	Sawers, Helen Jeanne	1921
Odom, Lela Perry-	1924	Scales, Ewell D., Jr.	1934
Odom, Martha Montgomery-	1922	Scherer, Louise	1938
Odom, Robert Leo	1924	Schleiffer, Stanley	1938
Ortner, Harriet	1938	Schmehl, Nondes	1928
Ost, Walter M.	1929	Schmidt, Doris Barbara Kirstein-	1930
Page, Marie Edity	1936	Schutter, Emma Frances	1929
Palmer, Fred M.	1925	Scoles, Bernice Wilson-	1921
Parrish, Ruth Starr-	1925	Scott, Forest W.	1931
Payne, Donald E.	1935	Shaw, Ward B.	1930
Payne, Laurence	1938	Self, Sadie	1936
Pelot, Mell	1938	Sheddan, Dorothy	1931
Pervis, Harold	1938	Sheddan, William E.	1935
Philmon, Clara Nell	1936	Shorter, Roland	1938
Pierce, Alice Lay	1923	Shull, Dale Hayward-	1925
Pillsbury, Ruth Iva	1928	Sisk, Louise	1926
Pipkin, Juanita Grace	1936	Slate, Herman Ivan	1925
Pirkle, Nelle Grace	1929	Smith, Alvan M.	1930
Pitton, Leslie	1938	Smith, E. Lewell	1930
Pitton, A. Marlete Turner	1932	Smith, F. LaVerne	1928
Pointek, Irene	1929	Smith, Nellah	1928
Porter, Charles Morris	1937	Snide, Rollin	1938

SOUTHERN JUNIOR COLLEGE

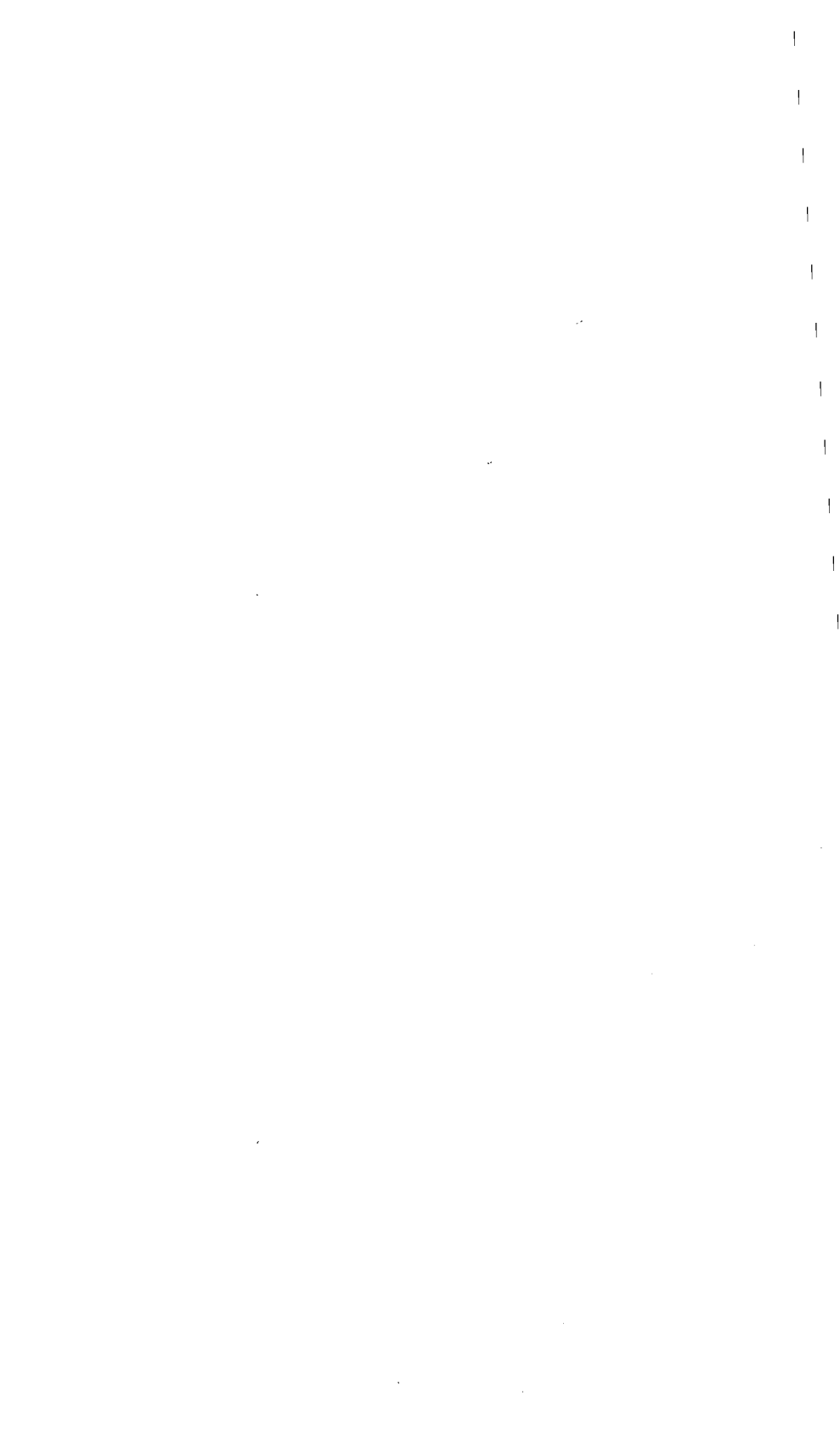
GRADUATES OF SOUTHERN TRAINING SCHOOL

Amb, Etta Reeder-	1908	Lacey, Flora Dawson	1912
Beugnet, Harold V.	1911	Lea, Ruby	1915
Brickey, Collin Perish	1906	Light, Amy Eloise	1905
Brooke, Howell	1907	Light, Amy Eloise	1907
Brown, Grace M. Craw-	1909	Lorren, Cloie E. Ashby-	1931 <i>SJC</i>
Brown, Grace M. Craw-	1911	Lowery, Gentry G.	1908
Callicot, Rees	1912	Lowery, Bertha Burrow-	1905
Callicot, Vesta	1912	Maddox, Robert Fera	1905
Callicott, Beulah	1907	Maxwell, Carl	1908
Clark, Stanley	1915	Maxwell, Myrtle V.	1912
Cochran, Claude M.	1910	Melendy, Leslie S.	1909
Cornish, Martha	1907	Mitchell, John Russell	1905
Davis, Florence Whitney-	1910	Mitchell, John Russell	1906
Dillen, Daniel W.	1911	Morphew, Hurbert	1905
Dixon, Nellie Travis-	1907	Mount, Bessie	1915
Dortch, Claude L.	1909	Moyers, Flora Dortch-	1905
Emmerson, Nina Reynolds-	1907	Moyers, Samuel	1907
Foster, Augustus H.	1911	Payne, De Etta Marie	1905
Franklin, Josephine	1915	Presley, Jenet E.	1910
Gray, Agnes, Sinclair-	1908	Reeder, Edna Travis-	1909
Gray, Alice	1915	Roberts, Benjamin Lee	1905
Grounds, John	1915	Schultz, Otto	1908
Hamilton, Bettie	1908	Smith, Mabel F. Mitchell-	1911
Harrison, Elizabeth Van Voorhis-	1911	Smith, Nannie Mae	1911
Harrison, Harlan	1911	Smith, Parizetta F.	1910
Haughey, Rachel Vreeland-	1905	Spear, Lawrence	1908
Hetherington, Alice J.	1909	Spire, Mrs. E. C.	1908
Hetherington, Marie Van Kirk-	1909	Summerour, Gradye Brooke-	1907
Hewitt, Carl	1908	Summerour, Gradye Brooke-	1908
Highsmith, Alvah	1915	Tenney, Earl	1906
Hightower, Mamie	1915	Van Voorhis, Margaret Hildebrand-	1905
Hollingsworth, Elsie M.	1905	Van Voorhis, Lawrence D.	1908
Hoskins, Bessie Seagraves	1915	Vick, Mary Vreeland-	1911
Howard, Ellis	1915	Wade, Edith	1908
Jacobs, Bertha Lea-	1905	Wade, Leslie	1907
Jacobs, Burton L.	1911	Washburn, Effie Nelson	1915
Jeys, Earl	1915	Webb, Benjamin F.	1910
Jeys, George	1915	Webb, Howard	1905
Jones, Gladys Andress-	1924 <i>SJC</i>	Webb, Valah C. Dillen-	1911
Kozel, Rosa M.	1910	Woodall, Marion Luther	1905
		Wright, John F.	1911
		Wright, Lynne Rainwater-	1911



INDEX

Absences.....	25	History Courses, College.....	35
Accounts, Payment of.....	16	History Courses, Preparatory.....	49
Accreditation.....	12	Home Economics Courses, College..	36
Admission Requirements.....	23	Home Economics Courses, Prep.....	50
Agriculture Courses, College.....	29	Honors Diplomas.....	26
Agriculture Courses, Preparatory.....	50	Industrial Arts, Preparatory School...	50
Associate in Arts Curriculum.....	42	Junior Class Requirements.....	28
Auditing Classes.....	27	Labor.....	19
Bible Courses, Preparatory.....	48	Language Courses, College.....	36
Biology Courses.....	29	Language Courses, Preparatory.....	51
Board.....	15	Location of School.....	11
Board of Management.....	4	Manual Training, Preparatory.....	50
Board of Trustees.....	4	Marking, System of.....	26
Buildings of School.....	11	Mathematics Courses.....	37
Business Administration Courses.....	29	Mathematics Courses, Preparatory...	51
Business Administration Curriculum	43	Medicine.....	46
Calendar for College Year.....	2	Ministerial Work.....	42
Calendar of Events.....	3	Music Charges.....	14
Change of Program.....	14,17,24	Music Courses, College.....	38
Charges for Music.....	14	Music Courses, Preparatory School..	52
Chemistry Courses.....	31	Music Curriculum, College.....	45
College Entrance Requirements.....	23	Nursing.....	34,47,6
College Preparatory Curriculum.....	54	Objectives of School.....	12
Colporteur Scholarships.....	18	Officers of Administration.....	9
Commerce Courses, Preparatory.....	48	Payments of Accounts.....	16
Committees of Faculty.....	10	Physical Education Courses.....	27,35
Correspondence Work.....	27	Physics Courses.....	39
Courses of Instruction.....	29	Preparatory College Curriculum.....	54
Credit Evaluation.....	26	Printing Courses, Preparatory School	51
Delayed Credit Grades.....	26	Private Lessons.....	14
Dentistry.....	46	Public Speaking.....	40
Deposit on Entrance.....	13	Purpose.....	12
Dietetics.....	46	Quality Points.....	26
Diplomas.....	14	Refunds.....	15
Discounts.....	16	Registration.....	23
Dormitory Charges.....	15	Regulations, General Academic.....	23
Education Courses.....	32	Registration, Late.....	23
Educational Fund.....	18	Residence Requirements.....	28
Elementary Teacher's Curriculum.....	44	Religious Education Courses.....	40
Employment of Students.....	19	Requirements for Admission.....	23
English Courses, Preparatory School..	49	Requirements for Graduation.....	27
English Language and Literature		Scholarships.....	18
Courses, College.....	34	Science Curriculum.....	46
Entrance Deposit.....	13	Science, Preparatory School.....	52
Examinations.....	14,26	"Semester-hour" Defined.....	26
Excuses.....	25	Sociology.....	35
Expenses.....	13,17	Speech.....	40
Expression.....	41	Standing Committees of Faculty.....	10
Extension Courses.....	27	Student Load.....	24
Extra-Curricular Activities.....	27	Summary of Curriculums.....	42
Faculty.....	5	Summary of Expenses.....	17
Fees.....	14	Summer School Graduates.....	28
Financial Plans.....	20,21,22	System of Grading.....	26
General Academic Regulations.....	24	Teacher Training Curriculum.....	44
Grades.....	25	Transcripts.....	24
Graduates of Southern Junior		Transportation.....	15
College.....	56	Tuition, Elementary Department.....	13
Graduates of Southern Training		Tuition, Preparatory.....	13
School.....	62	Tuition, Collegiate.....	13
Graduation Requirements.....	27	Tuition Scholarships.....	18
Health Education, Courses.....	34	"Unit" of Credit Defined.....	26
History of School.....	11	Vocational Supervisors.....	9



For Reference

Not to be taken

from this library

SOUTHERN COLLEGE MCKEE LIBRARY



TMS084306

NOT TO BE TAKEN
FROM LIBRARY

