

2-2021

McKee Minute February 2021

Southern Adventist University

Follow this and additional works at: https://knowledge.e.southern.edu/m_minute

Recommended Citation

Southern Adventist University, "McKee Minute February 2021" (2021). *McKee Minute – McKee Library This Month*. 81.

https://knowledge.e.southern.edu/m_minute/81

This Article is brought to you for free and open access by the Library Publications at Knowledge Exchange. It has been accepted for inclusion in McKee Minute – McKee Library This Month by an authorized administrator of Knowledge Exchange. For more information, please contact jspears@southern.edu.

McKee Minute

McKee Library Newsletter | February 2021



CAMPUS RESEARCH DAY

Proposals due online February 19, 2021

Campus Research Day 2021 will be held virtually on April 15th. The submission deadline to participate is on February 19, 2021.

Format Changes

Campus Research Day, coming Thursday, April 15, 2021, will be conducted virtually this year. Oral presentation participants will give their presentations via Zoom meetings, and poster session participants will submit digital posters along with a 5-minute pre-recorded video presentation, both of which will be available on KnowledgeExchange.

The event will feature a research competition with scholarship money awarded to winners in three categories: humanities, sciences, and social sciences. Each of the three category winners will receive \$675, and the poster session winner will receive \$100.

Additional details about the competition can be found on the Campus Research Day event page.

Submitting a Proposal

If you do not already have a KnowledgeExchange account, follow these directions to create one. You must have an account to submit your proposal.

To submit your proposal for Campus Research Day, visit the KnowledgeExchange Campus Research Day page. Click on "Submit Proposal" on the right-hand side of the page under "Author Corner". Fill out all required fields and click "submit".

Questions

Please contact Deyse Bravo at dbravo@southern.edu with questions.

POINTS OF CONTACT

Points-of-contact for select library services

Do you ever feel like you are not sure who the best person is to contact at McKee Library for a specific need? If so, we encourage you to visit our services directory, located under the About the Library section of our website.

Librarian on Leave

Melissa Hortemiller will be on maternity leave during the Winter 2021 semester. As such, points-of-contact will be modified for the Winter

2021 semester.

Please contact the following individuals:

Instruction

Nursing: Donald Martin
All Others: Jessica Spears

Campus Research Day
Deyse Bravo

Art in the Library
Seth Shaffer

RESEARCH COACHING

Research assistance available online or in person

Southern students, faculty, and staff may receive free research assistance for any assignment or project with a research librarian. Appointments are available via Zoom or in-person.

To schedule an

appointment, click on the "Research Coaching" link on the right side of the library's website. A link is also available under Services For Students and Services for Faculty.

VALENTINE'S CRAFT BAGS

Card making craft bags available February 1 through 14, 2021

We invite our campus family to stop by the library's circulation desk to pick up a free Valentine's card craft grab bag. The bags will be available February 1 through 14, while supplies last.

Each bag will be unique and contain materials to make one handmade card. We will provide items such as cardstock paper, ribbon, stickers, and paper hearts. You will need to supply your

own colored pencils and glue.

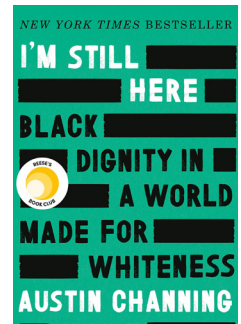
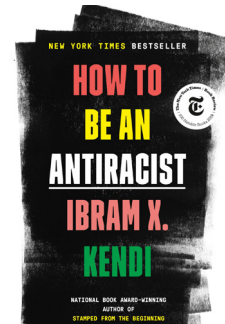
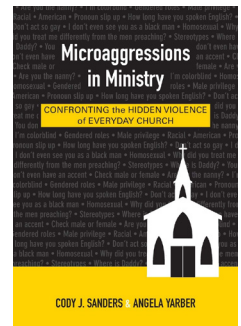
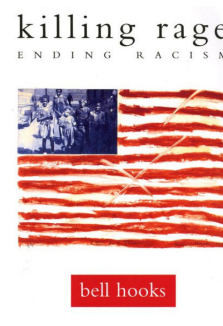
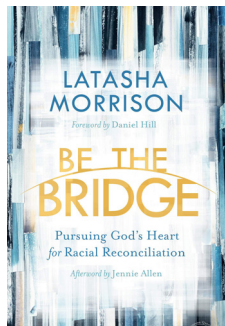
Questions

Please contact Jessica Spears at jspears@southern.edu with questions about this craft.



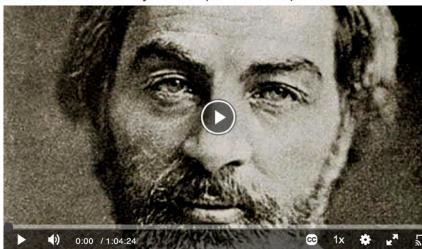
MUST READ BOOKS

Check out these anti-racism titles and more on our reading list.



Now STREAMING *Literature & Poetry*

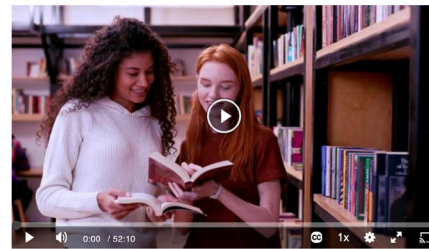
Part One: The Early Years (1819-1855) Full Video (01:04:25)



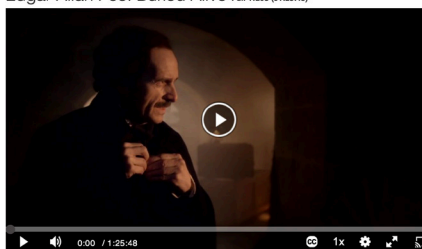
Melville's Moby Dick: The Back-Story Full Video (38:17)



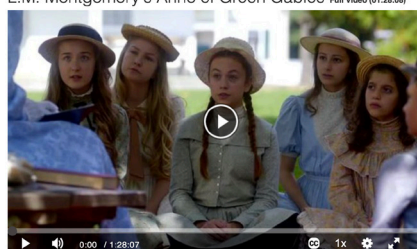
Who Am I? Full Video (52:10)



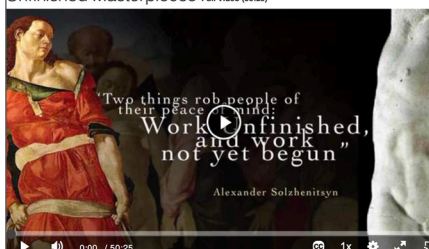
Edgar Allan Poe: Buried Alive Full Video (01:25:48)



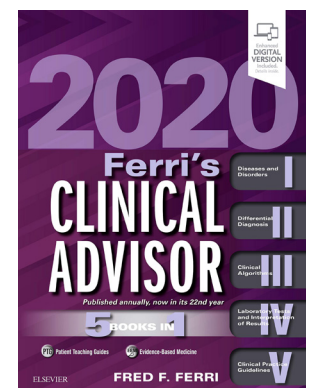
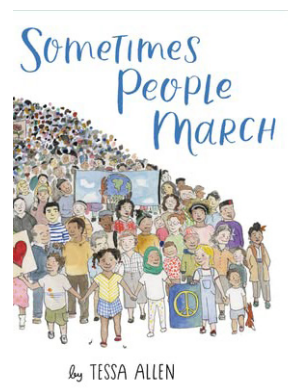
L.M. Montgomery's Anne of Green Gables Full Video (01:28:08)



Unfinished Masterpieces Full Video (50:25)



NEW & NOTEWORTHY



TOOLS & RESOURCES

MANUSCRIPT WOMEN'S LETTERS AND DIARIES

Alexander Street's *Manuscript Women's Letters and Diaries* from the American Antiquarian Society brings together 100,000 pages of the personal writings of women of the 18th, 19th, and 20th centuries, displayed as high-quality images of the original manuscripts, extensively indexed. The letters and diaries reveal, in

each woman's own hand, the details of the authors' daily lives, their activities and concerns, and their attitudes toward the people and world around them. The collection is drawn entirely from the extensive holdings of the American Antiquarian Society in Worcester, Massachusetts.

You can browse this database by content types,

historical events, places discussed, publishers, titles, people, and subjects.

Featured content includes the letters of Annie Sullivan, Ellen Tucker Emerson, Patty Rogers, Gale Family, and the Taintor-Davis Family.

Questions?

Please contact Donald Martin at dvmartin@southern.edu.

edu with questions regarding McKee Library databases.

HIDDEN FEATURE

INFORMATION LITERACY MODULES

McKee Library's instruction team is pleased to offer web-based, self-paced information literacy modules which can be easily integrated into eClass. These modules are available both as stand-alone instructional components and also as units, as outlined below. Video lengths typically range between two and five minutes. Tutorials include

text, activities, and ungraded self-check points.

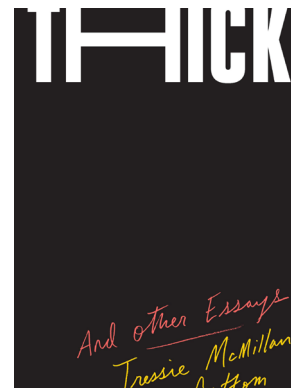
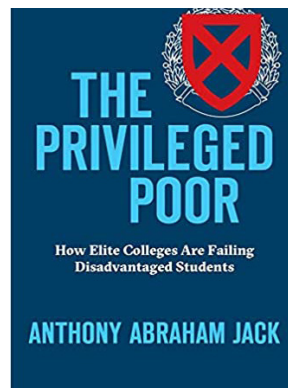
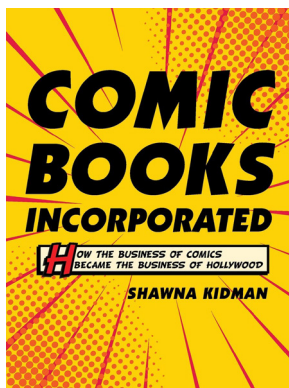
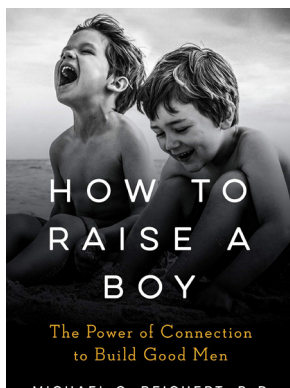
Topics include getting started with research, sources of information, searching for information, citations and academic integrity, and a collection of health science related tutorials.

Assessments

Select modules also include an optional assessment. To utilize the automatically graded quizzes and associated content in eClass, please contact Jessica Spears.

Questions?

Please contact Jessica Spears for more information.



FEBRUARY

1

LANGSTON HUGHES
BIRTHDAY

REMEMBER ME TO HARLEM

[REQUEST NOW](#)

2

GROUNDHOG DAY

GROUNDHOG GETS A SAY

[Request Now](#)

7

SEND A CARD TO A
FRIEND

*LETTERS FOR SPECIAL
SITUATIONS*

[REQUEST NOW](#)

8

9

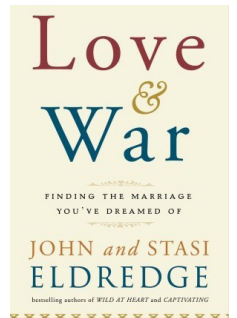
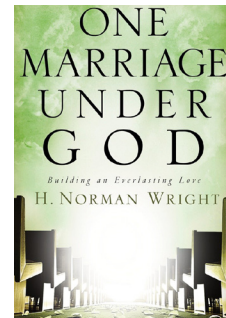
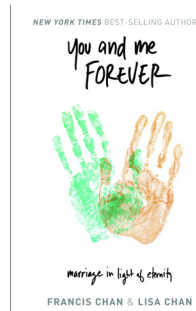
NATIONAL PIZZA DAY

ARTISAN PIZZA & FLATBREAD

[REQUEST NOW](#)

14

VALENTINE'S DAY



21

22

GEORGE WASHINGTON'S
BIRTHDAY

*GEORGE WASHINGTON: A
LIFE IN BOOKS*

[REQUEST NOW](#)

23

TENNIS DAY

*ALTHEA GIBSON: FIRST
AFRICAN-AMERICAN TENNIS
PLAYER*

[VIEW NOW](#)

28



3

FEED THE BIRDS DAY

4

5

FEBRUARY IS
BLACK HISTORY MONTH



[VIEW NOW](#)

10



12

ABRAHAM LINCOLN'S
BIRTHDAY

LIVING WITH LINCOLN

[VIEW NOW](#)

13

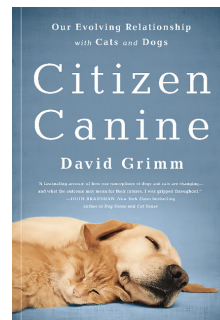
17

RANDOM ACTS OF
KINDNESS DAY

ON KINDNESS

[REQUEST NOW](#)

18



20

LOVE YOUR PET DAY

CITIZEN CANINE

[REQUEST NOW](#)

24

25

26

27

HENRY WADSWORTH
LONGFELLOW'S BIRTHDAY

POEMS & OTHER WRITINGS

[REQUEST NOW](#)

Library Hours

Sunday | 12 pm - 11 pm
Monday | 7:30 am - 11 pm
Tuesday | 7:30 am - 11 pm
Wednesday | 7:30 am - 11 pm
Thursday | 7:30 am - 11 pm
Friday | 7:30 am - 2 pm

Writing Center Hours

Sunday | 4 pm - 8 pm
Monday | 9 am - 8 pm
Tuesday | 9 am - 8 pm
Wednesday | 9 am - 8 pm
Thursday | 9 am - 8 pm
Friday | 9 am - 1 pm

Tutoring Center Hours

Sunday | 2 pm - 8 pm
Monday | 9 am - 8 pm
Tuesday | 9:30 am - 8 pm
Wednesday | 9 am - 8 pm
Thursday | 9:30 am - 8 pm
Friday | 9 am - 1 pm

FROM *the* VAULT

Select work from the *Domestic Science and Cookery Collection*

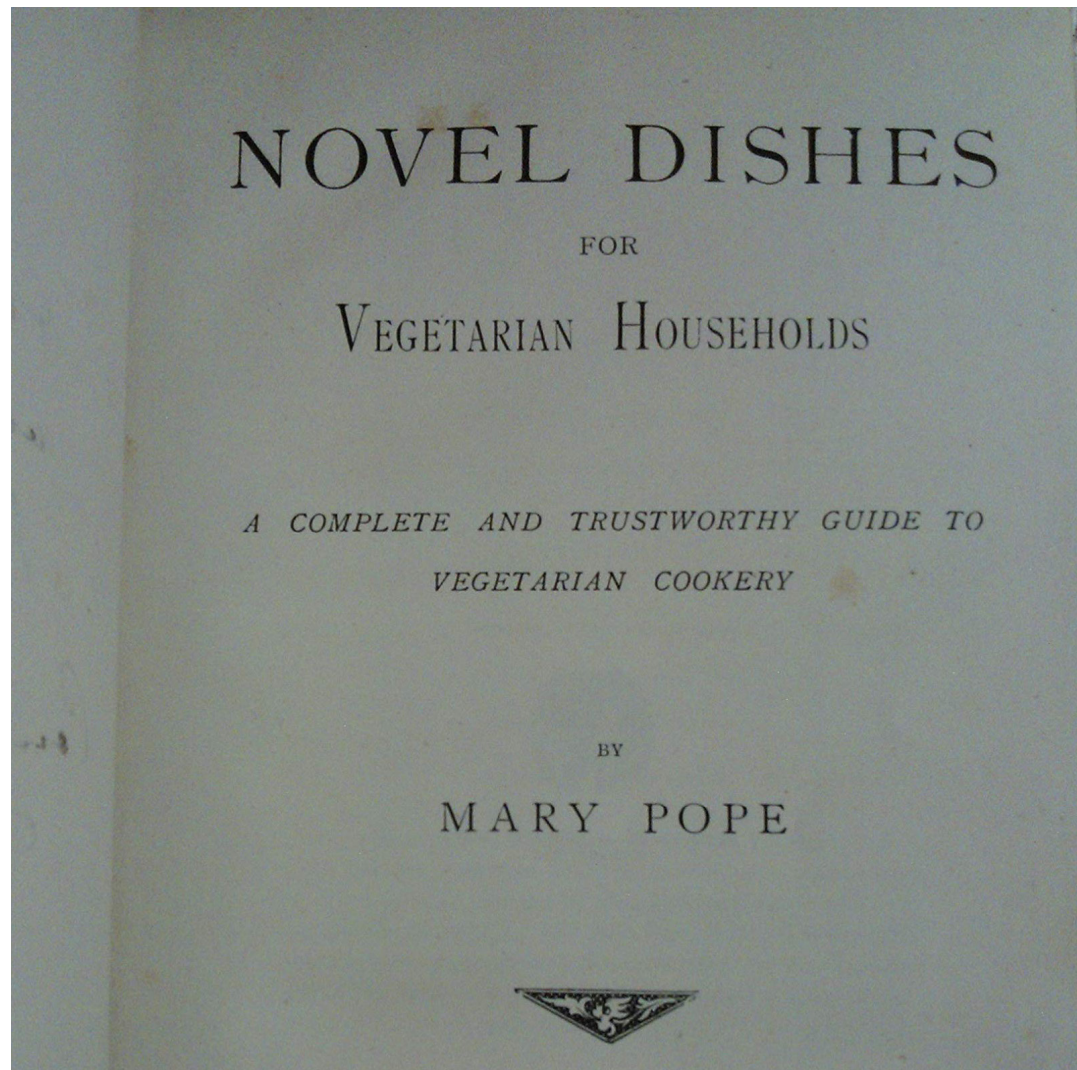
McKee Library's *Domestic Science and Cookery Collection* houses Mary Pope's *Novel Dishes for Vegetarian Households: A Complete and Trustworthy Guide*. This work, published in 1893, featured a comprehensive guide on vegetarian cooking.

About the Collection

The *Domestic Science and Cookery Collection* houses rare books on household management, etiquette, nutrition, and cooking. For a well-rounded 19th-century context, publication dates range from 1800 to 1950. This collection began with deaccessioned items from the library's general collection and is being supplemented with librarian acquisitions and patron donations.

Questions?

Please contact Deyse Bravo at dbravo@southern.edu for more information regarding the library's special collections.



P.O. Box 629, Collegedale, TN 37315
Phone: 423.236.2788
Fax: 423.236.1788
Email: ask@southern.libanswers.com
southern.edu/library



McKee Minute
Jessica Spears
Editor

Library Faculty & Staff

Deyse Bravo-Rivera
Genevieve Cottrell
Stanley Cottrell
Sonja Fordham
Carol Harrison

Melissa Hortemiller
Donald Martin
Shelly Merryman
Seth Shaffer
Jessica Spears