

Southern Adventist University

KnowledgeExchange@Southern

Alumni Newsletter

University Archives & Publications

1990

Southern Columns Fall 1990

Southern College of Seventh-day Adventists


Follow this and additional works at: https://knowledge.e.southern.edu/alumni_newsletter

Recommended Citation

Southern College of Seventh-day Adventists, "Southern Columns Fall 1990" (1990). *Alumni Newsletter*. 119.

https://knowledge.e.southern.edu/alumni_newsletter/119

This Book is brought to you for free and open access by the University Archives & Publications at KnowledgeExchange@Southern. It has been accepted for inclusion in Alumni Newsletter by an authorized administrator of KnowledgeExchange@Southern. For more information, please contact jspears@southern.edu.



Digitized by the Internet Archive
in 2009 with funding from
Lyrisis Members and Sloan Foundation

<http://www.archive.org/details/southerncolumns423coll>

McKEE LIBRARY
Southern Missionary College
Cottingham, Tennessee 37814

Southern College of
Seventh-day Adventists
NEXT RIGHT

A great place to test drive a Christian college.

We don't expect you to make a big decision without first test-driving your investment. That's why we offer new students *three free hours* of college credit plus *free rent* during our fourth summer session— July 29 through August 24. A \$275 deposit and books will get you on your way. So come on. Take the next right. Just write or call to arrange your test drive. This road will take you where you want to go.



SOUTHERN COLLEGE
OF SEVENTH-DAY ADVENTISTS

Southern College, Admissions, Box 370, Collegedale, TN 37315 or call 1-800-624-0350 in USA



Southern Columns

FALL 1990

**Giving Is Living:
Student Hugs at Registration
Alumni Gifts All Year**

The Making of Christian Persons

In his book, *The Idea of a Christian College*, Arthur Holms identifies the underlying objective of Southern when he states, "Education has to do with the making of a person, Christian education with the making of Christian persons." As an Adventist college, Southern's business of developing Christian persons who are also distinctively Adventist, has spanned nearly one hundred years.

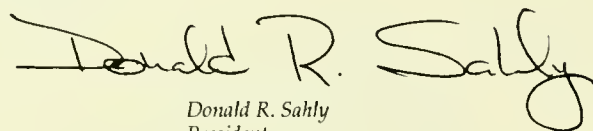
All whose names appear in this special edition of COLUMNS have helped make the year 1989-90 a distinctive one. You have shown commendable confidence in the objectives of the college. You have given sizable support to meet the known financial needs of the school. You have demonstrated that your values and beliefs parallel those that drive the educational processes at the college. Your donations, whether sizable or small, whether resulting from a personal appeal of a college administrator or a conversation with a student phonathon worker, are all significant and have added to the distinctiveness of this year.

Why do I refer to this year as distinctive? I could easily discuss the great relationships which mark the people of this school, or the quality of classroom teaching. I could talk about involvement in spiritual outreach and inreach or the buoyancy that pervades campus-wide social and recreational activities. Instead, I am referring to the fact that *you* donated \$2.6 million in cash, property, and gifts of future interest to your college last year.

And those of us here at Southern appreciate that vote of confidence. The faculty, staff, and administrators interpret your action as showing that you believe in those ideals which we work every day to instill. The students see your action as a vote of confidence in them, in the future of our church and their coming leadership of it.

Yes, you really have been involved with Southern in "the making of Christian persons."

For all of this, please accept our heartfelt thanks.



Donald R. Sahly
President

"Then why a Christian college? Its distinction should be an education that cultivates the creative and active integration of faith and learning, of faith and culture. This is its unique task in higher education today."

— Arthur F. Holms

Southern
Columns

VOLUME 42, NUMBER 3

DORIS STICKLE BURDICK
EDITOR

INGRID SKANTZ
EDITORIAL ASSISTANT

STAN STRANGE
COVER PHOTO

SOUTHERN COLLEGE

DONALD SAHLY
PRESIDENT

FLOYD GREENLEAF, '55
ACADEMIC ADMINISTRATION

DALE BIDWELL
FINANCE

WILLIAM WOHLERS
STUDENT SERVICES

JACK McCLARTY
DEVELOPMENT

RON BARROW
ADMISSIONS/COLLEGE RELATIONS

DEAN KINSEY, '56
ALUMNI/PUBLIC RELATIONS

DORIS BURDICK
PUBLICATIONS/MEDIA RELATIONS

PLEASE ADDRESS ALUMNI
CORRESPONDENCE TO:
SOUTHERN COLLEGE
ALUMNI ASSOCIATION
P.O. Box 370
COLLEGE DALE, TN 37315
(615) 238-2827
FAX (615) 238-3001

ALUMNI ASSOCIATION OFFICERS
1990-1992

HOWARD KENNEDY, '57
PRESIDENT

WAYNE RIMMER, '53
PRESIDENT-ELECT

JAN RUSHING, '58
PAST PRESIDENT

Southern Columns is the official magazine of Southern College of Seventh-day Adventists, published by the Alumni Association to provide news and information to former students, residents of the Southern Union, and other interested parties. Copyright 1990 by Southern College of Seventh-day Adventists.

FOUR PROFILES . . . AMONG MANY

This 'Alumni Special' issue of SOUTHERN COLUMNS focuses on you, the generous donor, on you, the alumnus invited home for the annual family reunion at Southern. In view of its specialized focus, this issue is being sent to the complete alumni mailing list but not to the Southern Union constituency en masse. Because the student today is the alumnus of tomorrow, and because students are both the focus of your generosity and our reason to be, we are introducing you to several of them. . . . The Editor

Robert Young

Robert chose to major in Long-Term Health Care. His goals include licensing as an administrator in both hospital and nursing facilities and finding employment in Florida.



In 1986 Robert spent six months in service for the Army and will serve in

the inactive reserves until 1993. He resides in Dalton, Ga.

He is a hard worker. Robert works as a resident assistant in the men's dorm, Talge Hall, as well as for Polymer Products, which sells latex products to carpet mills.

Robert is thankful for the scholarship program. He says, "I appreciate the investment Southern has made in my education and hopefully one day I will be able to assist someone else."

Christine Nelton

Taking a bachelor of science degree in social work, Christine has attended Southern for four years. Her interest is in hospital employment in the field of medical social work.

When not busy working and taking classes at SC, Christine has resided in Portland, Maine. Born in Ohio, she says she has grown very

fond of living in the warmer southern states.

William and Marga Nelton, her parents, are from West Germany but became U.S. citizens two years ago. She has four sisters. Ellen, one of her older sisters, attended Southern from 1975 to 1978.



Since May of 1989, Christine has been employed both in the summer and during the school year in the college's loan collections department.

Reginald Horton

Born in Chicago, Reggie became a Seventh-day Adventist in 1985, introduced to the religion through a girlfriend.



He says, "It wasn't my decision to come to Southern, it was God's decision. The Holy Spirit impressed upon me to come here."

Reggie feels that the financial aid program was definitely part of an

answer to prayer and that it has played a "key role" in his choice of Southern over other colleges.

Reggie is a senior theology major. He plans to continue toward his master's degree at Andrews University seminary. When all schooling is complete, his goal is to leave the U. S. and become pastor of a church abroad.

A dedicated worker, he has been employed by campus security since December of 1987. Reggie works year round overseeing campus parking and building security.

Kerry Jongema

A psychology major, Kerry's future plans include studying toward her master's degree and obtaining employment in rehabilitation psychology.

Kerry lives in Atlanta. Three of her four brothers and sisters attended SC. Her younger brother, Rob, is a current student also being assisted by the endowment program. Kerry says, "Rob and I probably couldn't attend Southern if it wasn't for the assistance we get from the endowment fund."



For two years as a student Kerry has worked for Angelica laundry services.



Shovel in hand, a youngster awaits participation in the groundbreaking while President Don Sahly and Pastor Gordon Bietz speak briefly.



Construction has already begun where this group was standing. Actually the first phase of the building project is already completed: expansion of the sanctuary platform and new interior lighting. Campus church service times have been moved to 9 a.m. and 11:30 a.m. for this school year.

Addition Is Started for Church

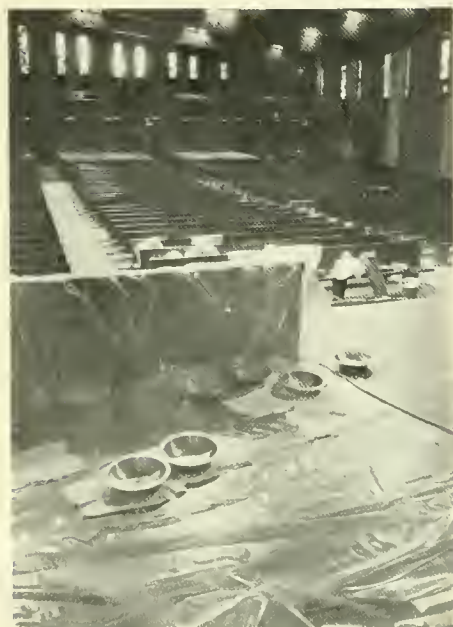
Ground was broken July 16 for a \$3.8 million addition to the Collegedale Seventh-day Adventist Church.

The structure will provide room for five children's divisions, eight adult classes, a fellowship hall with kitchen, two chapels for youth

meetings and small weddings, and improved office space, all built around an open atrium.

The festal event was the first official occasion for Malcolm D. Gordon as new president of the Southern Union and chairman of the Southern College Board.

Brief greetings, a responsive reading, and a prayer of consecration preceded the actual breaking of ground. Ice cream and cookies provided by church members topped off the celebration. Completion of the project is scheduled for late fall 1991.



Basins served in an out-of-the-ordinary way when a storm struck the church. Some 125 volunteers showed up to help limit water damage.



Campus trees took a beating in the same storm that removed 75 percent of the church roofing. Grounds director Ray Lacey counted 61 trees down.

Violent Storm Damages Church, Campus

When tornado-like winds hit the campus on August 4, they left behind a trail of damage from the church to the student park. Three quarters of the church roofing material was torn away. Though 4-inch ceiling/planking remained in place, heavy rain soaked carpet, pew pads, and the Heiller Memorial Organ. Losses there were assessed in excess of \$200,000, more than half of which related to the organ.

Final count of arboreal loss came to 61 trees, with many more damaged. A power pole was broken on Industrial Drive. Two small waterlines broke and the tennis courts sustained damage. Campus damage exceeded \$10,000 in addition to that incurred at the Collegedale Church.

Students in Field School Find Joy of the Harvest

"I think this is the best part of my education."

The poised young lady bubbles with enthusiasm. Terri Lynch is a religion major and the only woman among the 15 students enrolled in the summer's evangelism classes.

"The part I enjoy the most is seeing the reaction on people's faces when they discover Bible truths that eluded them before," offers Evan Valencia "To watch people change—it's just amazing."

Full-scale evangelistic meetings began in Asheville, N.C., on July 19 under the joint direction of Southern's Department of Religion and the Southern Union Conference. Asheville, 200 miles east of Collegedale, neighbors the Blue Ridge Parkway. The series ended August 25, just in time for participating students to return to campus for the fall semester. At that point 42 had already been baptized.

Six hours of academic credit in public and personal evangelism are offered each summer. Along with invaluable experience, students receive a scholarship from the Southern Union. All church ministry majors are expected to participate.

"We had classes from 9 to 12, visited from 4 to 6, and then helped with the 7 o'clock meetings," reports Terri. "We worked with the pastors of eight local churches and visited 35 or 40 interested people."

Dr. Doug Bennett represented Southern College in this segment of professional training. (He calls it a "living lab.") Evangelist was Ron Halvorsen, director of church growth and evangelism for the Southern Union.


"Ron's an excellent teacher and evangelist, so enthusiastic that it can't help but rub off on you," Terri says. His Christ-centered, Bible-based messages brought 600 to 650 people out on average, some 130 of

them not yet members of the Seventh-day Adventist Church.

While all students explored framework topics such as evangelistic organization, advertising, and budgeting, each student took a particular role.

Has the summer increased their personal interest in evangelism?

"Absolutely. I think every church needs an evangelistic series every year," responds Evan.

"It's therapeutic for the Adventist Church," declares Terri. "Sometimes we forget that people are out there wanting to find God's answers." 


Recruitment 'Explodes' With Witnessing Team

Take five students, combine with a creative idea, and recruitment at Southern has a new dimension. The added bonus? Current students meeting and talking with prospective students on a personal level.

The primary focus of this new group is not only to encourage young people to attend Southern, but more importantly, to help others make a positive decision for Jesus Christ. The group calls itself the Youth Explosion Team.

Kyle Robinson, student leader, is a junior religion major from South Carolina. Also on duty in Florida and the Gulf States this summer were Kathy Stewart, junior music, California; Kevin Balli, sophomore engineering, Missouri; Tamatha Collson, sophomore med tech, Texas; and Brennon Kirstein, junior religion, Maryland.

These multi-talented individuals present group meetings and visit in person, by phone, and by letter to make their emphasis clear: the Christian life is happy and exciting.

Merlin Wittenberg, the sponsor, is associate director of recruitment. 



Bus Eases Tour Plans

When the Southern College Concert Band or Symphony Orchestra loaded up the old bus for a tour, there just wasn't room in the bays for some of the larger instruments. Gifts from friends of the college, including the Committee of 100, covered the purchase of a 1984 Neoplan bus seating 54 passengers and three persons in the driver area. Its rebuilt motor had less than 1,000 miles on it at time of purchase.

Southern Today

Have you asked for Southern's 30-minute video in newscast format? Alumni contributing \$25 or more to the Alumni Loyalty Fund may request a copy when they send their gift. Prospective new students may call 1-800-624-0350 to ask for a complimentary copy. Available while supplies last.

Registration Is More Than Numbers

Each new semester brings to campus intriguing people from varied directions and backgrounds. I'd like to introduce several new friends I've met since school began.

From Honduras

Roberto Ordonez is a freshman computer science major from Honduras, a mountainous country slightly larger than Tennessee. Literacy is about 56 percent. An endowed scholarship fund for Central American students made it possible for him to be here.

"I worked to get my general credits done in case I could come to the United States," said Roberto. At the University of Costa Rica Roberto took 20 hours of classes in one semester to get ahead. Contends Roberto, "My teacher who recommended me for the scholarship had even more faith than I did."

"I don't think I could have come up here without any help," he admitted. "God led."



Roberto Ordonez

An enrollment of 1534 brings with it 1534 personal stories. Stories of achievement. Stories of difficulties overcome. Stories of choices and where those choices led. Each story is different. Each is important. These are simply a sampler. It's an attempt to convey the exciting dynamic of mind meeting mind as this generation prepares for the future.

by Gina McIntyre
Junior Public Relations Major

COVER: A summer can seem like forever. The photographer captured the exuberant registration-time greeting exchanged by Thatcher Hall roommates Angela Dobias and Elizabeth Theus.

From High School

Travis Patterson, a freshman broadcast journalism major, came to Southern as the only Adventist from a large public high school in South Carolina. "I came to Southern because of the chance to grow closer to God."

"Public school was tough," he confessed, "mainly because of social reasons. Events were on Friday night and Sabbath. But most of my friends were open to my religion. I went to school with some of the kids from grades 1 through 12. By high school everyone knew that I was a Seventh-day Adventist."

While at Woodruff High, Travis was the president of "Teens for Christ," a small club that met once a week for prayer and devotions. The faculty awarded him a place in the "Senior Hall of Fame" for students



Travis Patterson



Left: To parents, college registration can bring the kind of reflection seen on these faces. Marvin and Candy Elliot of Candler, N.C., were watching their son, Lee, register as a freshman.

Right: Freshman Wendy Waters got a head start on the school year by enrolling for the free Fourth Summer Session. In the four August weeks of summer school immediately preceding the fall semester, she was one of 506 students on campus.

who showed responsibility and involvement.

Travis was apprehensive about fitting in at an Adventist college, not arriving on campus with a built-in circle of academy friends. "There were few Adventist youth where I come from," explained Travis. "What I've found is that you can have great fellowship with SDA youth." He gives his new peers every reason to expand their social circles to include students from public schools.

From the Sea

Once a fisherman on Chesapeake Bay, Jim Ashburn, sophomore religion major, is now studying to be a "fisher of men."

Jim shared a seafood business with his father for eight years. "My decision to become a Christian came after the divorce of my parents after 26 years of marriage," stated Jim. "It made me think about my own life."

Jim had grown up as a nominal Sunday-keeper. He decided to attend some prophecy seminars at a local church. "I didn't even know what kind of church it was," he admitted.

He said he always had a feeling "that something was missing. A void was there. I guess over the years you can get skeptical about religion. But these people didn't pound me over the head with religion. They pointed me to the Bible. These were the people that I had associated with all of my life, and I didn't know how they worshipped."

Jim did not make a full commitment after the meetings, but he did start to go to church regularly. Two particular sermons on consecutive

Sabbaths led to his decision. "The Holy Spirit was just coming out of the pulpit and talking through my preacher," he explained.

At first Jim continued to "crab" after his baptism. But eventually Jim's uncle told him that he would no longer buy his product if he would not work on Sabbath. Jim stated, "We ended our relationship. It was a blow to see our relationship end, because he was also a relative."

Jim heard about Southern College from his church family. He mentioned his interest to his pastor, who convinced him to travel to the campus that Sunday. Within days Jim found himself in fourth summer session classes, taking "Life and Teachings of Jesus" from Dr. Derek Morris. "It is a course I will never forget," he replied.

Through loans, the Endowment Fund, support from the church, a



Jim Ashburn

Fall Opening Enrollment

September

Year	Head Count	Hours Enrolled	FTE
F90	*1534	19,974	1289
F89	*1496	19,797	1277
	+ 38	+ 177	+ 12

*Not including Student Missionaries:

F90	30
F89	28

Orlando	136
Exclusive of Orlando	1398
	1534

Freshmen	434
Sophomores	348
Juniors	266
Seniors, 4-year degree	194
Seniors, 2-year degree	119
Seniors, non-grad	73
Post-grad & special	100
	1534

small amount of money left from his crab business, and a part time job as an umpire, Jim has been able to stay in college. "Somehow it has all worked out," he grinned, "I'm still here!"

"We're all special," he stated. "We all go through certain things, but the Lord blesses us all. I like sharing that with people. I want to keep people from going through some of my pain. That's all I want to do. It takes a lot of prayer."

Southern College students and faculty come from all around the world, but the thing that links them all is commitment. The commitment to the God they serve. As the song says, "We are all brothers in the Lord."



THANK YOU . . .

One hallmark of a great college is a long list of individuals and organizations who share their resources to support its mission and programs. The following list of donors is cumulative and includes those who have given \$250 or more within the past three fiscal years (between July 1, 1987, and June 30, 1990). Patrons gave in the most recent fiscal year.

Every attempt has been made for accuracy. If by chance your name has been misspelled, inadvertently omitted, or misplaced, please accept our apologies and advise the Development Office.

DONOR GIFT CLUBS

+first time in category
*deceased

PRESIDENT'S CIRCLE \$25,000 and up

Anderson, Eugene
Berner, Perry & Anne
+Bottomley, L. Neall
Bowen, Josie & Dewitt
Bowers, Norma & Robert
Burdick, Bille & Paul
Castleberg, Evelyn & David
Clark, D.J.
Coffey, Barbara & Cecil
Colthren, Edythe & Frederic
+Cowdrick, Grace & Jesse
Dart, *Merrill
Fleming, Betty & Chick
Hall, Novella & Albert
Hickman, James
Hulsey, Myrtle & Bill
Hunter, Don
Iles, Jean & Bill
Johnson, Mary & Oscar
Levering, Irad & Thelma
McElroy, Joy & Buddy
McKee, Betty & Jack
+McKee, Debra
McKee, *Ruth & O.D.
McKee, Sharon & Ellsworth
McNeilus, Denzil & Donna
Nelson, William
Pangborn, Eva
Preston, Forrest
Reynolds, *Maurine
Rul, A.F.
Schill, Jean Wingate
Schmidt, Ehrich
Taylor, Elsie & William
Ulmer, Martha & Sanford
Wilson, Charles
Wood, Nellie

CENTURY ASSOCIATE \$10,000 to \$25,000

Baker, Sue
+Barto, Michael
Blair, Mardian
Boyle, Darleen & Jim
Brock, Richard
Butterfield, Arthur
Campbell, Thomas
Cardey, Audrey
Chastlain, Chalmer
+Chen, Tony & Delma
Coppock, Lucille

Cross, Billie & Darrell
Davis, Jeanne & K.R.
Dean, Olivia
DeFoor, Judith & Kenneth
Elkins, Harold
Eurick, Dewey
Fuller, Forrest & Norma
Garner, Beverly & Julius
Goggans, *H.H.
Huenergardt, Charlotte & Howard
Jacobs, Carl & Ruhf
Jarrett, Darlyne & David
Leland, John
Maddox, Theo
Martin, Gerald & Kathleen
McClarty, Wilma & Jack
McGhinnis, Kitty & Bill
McKinney, J.R.
Merchanl, Bob & Agnes
Mitchell, Mearl & Jason
Murphy, Harvey
Nelson, William
+Pendleton, Leslie & Barbara
+Preston, Winton & Lourene
Rushing, Patricia & Jan
Sines, John & Lynora
+Somerville, Lewis
+Spanos, *Alberta
+Tail, Ardith & Reid
Taylor, Joan & Dennis
Waller, Sue & Louis
Wheeler, Ira

DIAMOND ASSOCIATE \$7,500 to \$10,000

+Berkey, Candy & William
Chong, Dayton
Clark, Jerome & Ann
+Curry, Nancy & Fred
+Durichek, Helen & John
Graves, Charles
Gulley, Leona & Norman
Hulsey, Steve
Ludington, Cliff
Odom, Robert & Martha
+Reiner, Richard & Lynnet
Stevens, Wyn & John
+Winters, Judy & David
+Zinke, Edward

GOLDEN ASSOCIATE \$5,000 to \$7,500

Adams, Robert
Andrews, Frances

+Anonymous
Brickman, Theresa
+Cursetjee, Xerxes
+Cursetjee, Zareer
Donald, Ruby
+Duge, Mildred & John
Ford, Betty & Carroll
+Haynes, Carole
+Hoosier, Marianne
+Liu, Ruth
+McElroy, Jay & Stephanie
+McKee, Angela & Michael
+McKee, Jr., Rusty
+Murphy, Anne & Bob
+Payne, Laurence & Doris
Reifsnnyder, Edward
+Richert, Charlene & Lindley
+Saturno, Malinda
Speyer, John
Taylor, Pam & William
Taylor, Victor & Ruth
+Vollmer, Mary
Wallack, *Dwight
+Werner, Tom
+Wilkins, Bonnie
+Wong, Alice

SILVER ASSOCIATE \$2,500 to \$5,000

Austin, Alice & Wiley
Baehm, Tena & George
Barrow, Colleen & Ron
Bowers, David
Boyd, Miriam
Burdick, Doris & Al
Cashman, Marion
Chastain, Shirley & Andrew
Cowdrick, Elizabeth
Crandell, William & Doris
Cruise, Joseph
Elkins, Paula & Lynn
Fisher, Buddy
Futcher, Gladys & Cyril
+Garver, Betty & Phillip
+Hall, Mary & Stephen
+Hamilton, Jackie & Ted
Haupt, William
Henson, Shandelle
+Huggins, Dia & Delwin
Jones, Marcy
Keele, Arlie
+Lamberth, Carl
Larsen, Richard
Loh, Daniel
Martin, Don
McFarland, Ina & Thomas
Metcal, William

Mitzelfelt, Richard
Morris, Derek & Bodil
Neyman, Parker & Debra
Reed, Don
Reynolds, William & Mable
Richards, Ruth & Evan
Rolle, Rhea & Cecil
+Rozell, Joann & Daniel
Rul, Rolland & Tina
+Sias, William & Esther
Smith, Raymond
+Spears, Mildred & Kenneth
Sue, Ruby & Bill
+Thompson, *J. C. & *Sue
Thompson, James & Lois
Townsend, Janet & Dale
Vigh, Alexander & Susonya
Welch, Jo Anne & Wallace
Wells, Laurel & Harley
Wygall, Benjamin

AMBASSADOR CLUB \$500 to \$2,500

+Abbott, Dorothy & Maurice
Abu-El-Haj, Joan & Fawzi
+Aculf, Jo & Calvin
Adam, John
Adams, Barbara & Howard
Adams, John
Alexander, James
Ammons, Frances & Robert
Anderson, Judith
+Andrews, James
+Arbury, Dorothy
Ashlock, Marcella
Ashton, Leila & Bruce
Avant, Diane & Edward
Baker, Ruth
Battle, Hanna & Roy
Bennett, Nell & Doug
Biggs, Georgene
Bishop, Sr., Wilber & Helen
Blake, Steven & Robyn
Blanco, Jack
Bogovich, Mary & George
Bohannon, Donald
+Bolton, Becky & Robert
Bottsford, Jane & John
Bowen, Bob & Dorothy
Boyd, Robert & Maurine
Braley, Olive & Bradford
+Brannan, William
+Brown, Maxine
Burchard, Ann & Robert
Burton, Alfred
+Butler, Howard
+Carpenter, Doris & William
Center, Richard
Clapp, Iris & Willard
Clark, Walter
+Cloutier, Clarence
+Comstock, Delos
Coolidge, Everett
Cothren, Elisabeth
Henson, Shirley & Robert
Cowdrick, Dorothy & Robert
Cowdrick, Mary
+Crandell, Merwyn & Donna
Crawford, Rolland
Crook, Stewart
Culpepper, Judy & James
Cummings, Mary & Des
Dannenberger, Martha
Davis, Martha & James
+Dick, Donald & Joyce

+Dittes, Patricia & Albert
Dysinger, William
Elam, Mary
Erickson, Richard
+Eusey, Kathryn
+Evans, Donna & Dwight
Ferree, Nellie
Fisher, Betty & Dale
+Folkenberg, Robert
Friberg, Jr., Russell
Fuller, Jeannine & Glenn
Fuller, Myrtle
Geary, W.A.
Gibson, Ruth
+Gilbert, Orlo & Ellen
+Gooch, David & Kathryn
Goodbrad, Ruth & John
+Gordon, M.D.
Grantier, David
+Greenleaf, Betty & Floyd
+Gusso, Rick & Millie
Hakes, Marjorie & Robert
Hartwell, Thelma
Hazelton, *Lavanne
Hedrick, Mary
Hefferlin, Ray & Inelda
Henderson, Lyle
Herin, Mazie
Hess, Debbie & Chuck
Hevener, Fillmer & Celia
Hickman, James
+Hittle, Debbie & Ted
Holland, Judy
+Hooper, Harry & June
Houck, Florence & Duane
Hunt, Bonnie
Hurst, Florence
Hurt, Louise
Hyde, Gordon & Irma
Jacobs, Ray
Jansen, Marguerite & Carl
Jewett, David & Jenny
Johannes, Joseph
+Johnson, Dean
Johnson, Harriet & Harold
Keppler, Burton & Dorothy
+Kinder, Neva & J. B.
Kinsey, Martha & Dean
Kinzer, Suzanne
Klein, Eddie
+Kochenower, Teresa & Benjamin
Kuhlman, Huldrich & Marian
+Lacey, Gloria & Charles
Leas, Larry
Liles, Barbara & Aubrey
+Lilly, Delyne & Michael
Lindberg, Evelyn
Lonberg, John
Macdonald, Nellie
+Magoon, David & Sue
Malgadey, Belh & Peter
Manuel, Percy
+Marlowe, Linda & James
Marsa, Gordon
Martin, Edwin
Mashburn, Sally & Joe
McAllister, Ione
McArthur, Benjamin & Caroline
+McCandless, Skip & Mary
+McClure, Evelyn & Warner
McClure, Frances & Alfred
McKee, Janel & Christopher
+McMillan, Betty & Robert
McMillan, Nancy & Frank
McNulty, John & Frances
Medford, Menton
+Meister, Richard
Mickiff, Lorabel

Miller, Scott
 Mizelle, Dianne
 Moody, Harold
 Moore, Lois & Robert
 Morrison, Patricia & Robert
 Murdoch, Ruth
 +Muschette, V
 Neal, Linda & Edward
 Nooner, Darrell
 Okimi, Wayne
 +Orange, Patricia
 Palmour, Patricia & Frank
 Palsgrove, John & Carol
 +Parker, Marilyn & David
 Patterson, Barry
 +Payne, Lavela
 +Phillips, Betty & Harold
 +Pierce, Charles
 Pierson, *Dollis & *Robert
 Pierson, Pauline
 Piler, Lorraine & John
 Pritchett, Gary
 Reid, Edward & Kathy
 Rice, Lawrence & DeLores
 +Richards, E. E.
 Richards, William & Evonne
 Richert, Joyce & Arthur
 Ringer, Bruce
 +Ritchie, Kay & Max
 Robertson, Marvin & Jeanie
 +Robinson, Ralph
 Ryckman, Raymond
 +Sahly, Don
 +Sanford, Darleen
 +Sauls, Helen & Lynn
 +Schriber, John & Marilou
 +Servoss, Sue & Ronald
 +Shankel, Clinton
 Shim, J. T.
 Sines, John
 Slale, Myrtle
 Slikkers, Robert
 Sloan, Thyra & Richard
 Smith, Warren & Elouise
 Smoot, Irma & Grady
 +Sowers, Nellie
 +Spady, Linda
 Spears, Don & Shirley
 Steele, Libby & Dennis
 Stephenson, Rochelle
 +Stophel, Glenn
 +Stophel, John
 +Summerour, Robert
 Sutton, Layton
 +Swarner, Julia & Ward
 Swayze, Mary & Donald
 +Tait, Bradley & Jill
 Thompson, Elaine & Royce
 +Towles, Eddie
 Travis, Paul & Grace
 Troxel, Josephine
 Turlington, Rita & Drew
 +Vallieres, Scott & Sharlyn
 +Van Arsdell, Marcia
 VandeVere, Evelyn & Wayne
 von Henner, Rosalie & Chan
 Von Maack, Hazel & Wolfgang
 Walter, Elden
 Wareham, Alice
 Warren, Steven
 Watson, Ruth & Paul
 West, Florence & Donald
 West, Jr., Donald
 Wheeling, G. C.
 Whidden, Jewel & Charles
 Whitehead, Lois & John
 Wilhelm, Kathryn
 Willett, Robert

Williams, Nellie & Larry
 Willis, Jan & William
 Wilson, Morris
 Wittenberg, Janice & Merlin
 +Wong, Robert
 Wood, Robert
 Woodall, *Irene
 Yelvington, Clare
 +Young, Phyllis & Richard

LOYALTY CLUB
\$250 to \$500

+Anderson, Gene
 +Bandiola, Ben
 +Bauer, David
 Bennett, Harry & Ercel
 Berrett, Elaine
 Beugnot, Eva
 Bishop, Loren
 Bishop, Robert
 Blasius, John
 +Boksberger, Hans-Peter
 +Boyd, Velma
 +Boyson, Beverly & Jack
 Bradley, *W.P. & Mildred
 +Brock, Debbie & Robert
 Brooke, Maude
 Brown, Glenda & Ronald
 Brown, Koy
 Brownlow, Heather & Joseph
 Burns, Richard
 Butler, Alma
 Cabalo, Gerry
 +Cherne, Brent & Tammy
 Chisholm, Evelyn & Darrell
 Clifton, Keith
 Closser, Myrna & James
 +Cookson, Royce
 Coolidge, Herbert
 Coolidge, William
 +Costerisan, Francis
 Cothren, Frederec
 Cothren, Jack
 Coulter, James
 Crowder, Katharyn
 Dart, Mona
 Dart, Teddy & Archa
 Davis, Doris & Cecil
 +Davis, Scott
 +Dawal, Laneta
 +Degrave, Sheri
 DeLay, Judy
 +Deloney, George
 Dickerhoff, Beverly
 +Dingle, Roy
 +Doggette, Jackson
 Doherty, Daniel & Lois
 +Downs, Shawna
 +Dresser, Emily
 +Duerksen, Russell
 Earp, Royce
 East, Marie & Robert
 Eldridge, Gary
 +Eller, Tracy & Edward
 Facundus, Elsie & Jack
 Filler, Carlene & Judson
 +Finley, Lyle
 Flach, Barbara & Charles
 Fox, Lorraine & Archie
 Franz, Eulalia & Clyde
 Fuller, Sally & George
 Gardner, Roger
 Gentry, David
 Gentry, Michael

Gilbert, Don
 Gimbel, Karen & Gregory
 Graham, Paula & Leon
 Green, Elaine & Richard
 +Green, Jon
 Griffin, Peggy
 Guthrie, Patti
 Hand, Ronald
 Harlow, Bruce
 +Harris, Pamela
 Harris, Ruth & Charles
 +Harrison, Billie
 Harrison, Estrella
 +Haupt, Faye & Ronald
 Hawthorne, Bill & Mary
 Hendershot, Ralph
 Henderson, Linda
 Henderson, Willfred & Mary
 Holland, David
 +Holmes, Oliver & Laura
 Howard, Melvin
 +Hughes, Claude & Winnie
 +Hughes, Ross & Betty
 Huh, Katherine & Young
 Ingram, Ruth
 Jackson, Connie
 Jackson, Edward
 Jiminez, David
 Jones, Barbara & William
 Keaton, Marlene
 Keith, Nellah & William
 +Kelly, Ronn
 Kenny, Gladys & Fisher
 Kijak, Marie
 King, Jolena & Roger
 +Klaver, Louise & John
 Koester, Beverly & Carl
 +Korff, Renou
 Kroeger, Don
 Kuykendall, Fred
 +Ledford, Archie
 +Leech, Joseph
 Leggett, Rosemary & Hugh
 Lemon, Alice
 Lindsey, Sharon & Charles
 Lippert, Richard & Karen
 Loy, Patsy & Monroe
 Markoff, David
 Massengill, Cloie
 May, Joyce
 +May, Paul
 McClellan, Sandra & Robert
 McClure, *Edith & Alfred
 McClure, Herbert
 McMillan, Paul
 Melashenko, Vincent
 Merriman, James & Margarita
 +Midkiff, *Marvin
 Miller, Opal
 Mitchell, Viola & Allred
 +Moore, Barbara & Benjamin
 Moore, Evelyn
 Moore, Jones & Patricia
 +Moore, P.J.
 +Morris, Brenda & James
 Myers, Betty & Clifford
 +Nelson, Harry
 Nelson, Lorene
 +Dldham, Ray
 Dlsen, DluF
 +Dlson, Jessie
 +Parker, Philip
 Peek, Marvin
 +Perez, Pearl & Arturo
 Peters, Louesa
 Petersen, Margarete
 Raitz, Robert
 +Rausch, Judith & Robert

Reams, Joseph
 Reiber, Eunice & Milton
 Reiber, Evelyn
 Reid, Nelda
 +Roddy, Fairra
 Rodgers, Rozelle
 Schieler, Mark
 +Shaffer, Nancy & Duane
 Sharian, Serphouhi
 Shaw, Debra & Carl
 Shelden, Raymond & Emalyn
 Short, Garnette & Donald
 Shull, John
 +Snyder, Jr., Richard
 Soler, Eddie
 +Sorensen, Ruby & Niel
 Stanley, Coleen & Richard
 Steen, Linda & David
 Stone, Terry
 Strayer, Brian
 Strelling, Rulh
 +Sumpler, Ward
 Tate, Winford
 Taylor, John
 Thompson, Margaret
 Thoresen, Brenda & Nelson
 Tolhurst, Ethel
 Tolhurst, Jane & George
 Trimble, Aline
 Trummer, Max & Esther
 Van Horn, Dorsey
 Vogt, Glenn
 Wallers, Merrie & Clyde
 +Walson, Ron
 Weaver, Diana & Leslie
 West, Delby & Kenneth
 Wickwire, Adele
 Will, Bennie
 +Williams, Russell & Genevieve
 Wilson, Don
 Wilson, Donald
 Wilson, Jerry & Tracy
 +Wood, Betty
 +Woodall, Hermon
 Yost, Stephen
 Zeman, Nena & Daniel

PATRON CLUB
\$10 to \$250

A
 Aalborg, Bryan & Sharon
 +Abbott, Lori & Michael
 Abbott, Tracey & Jeffrey
 Abernathy, Marcia
 Acevedo, Shelly
 +Achenbach, Andrea
 +Adams, Betty
 Adams, Jessie
 Adams, Suzanne
 Adams, Suzette & Jelf
 Adels, Peggy & David
 Aebersold, Charles
 Aitken, Kathy
 +Akers, Norma
 Albock, Doris
 Albritton, Elizabeth & Jerry
 +Allan, Nelda
 Allen, Cynthia & Neil
 Allen, Paul
 Allen, Rose
 Alonso, Waldina & Rene
 +Althoff, Janice

Anders, Pamela
 Anderson, Fern
 Anderson, Jeanette & Dale
 +Anderson, June
 Anderson, Mildred & Paul
 Anderson, Nancy & Mark
 Andrews, Kenneth
 Archie, Peter & Sharon
 Ariste, Claudel
 +Armstrong, Vivienne & Frederick
 Arlhur, Richard
 Artress, Mary
 +Ashton, Ted
 +Ashton, Vicki & Danny
 Atchley, Laura
 Atkins, Beverly & Jacob
 Atkins, David
 Atkins, Robin & Ronald
 Altride, Sherry
 +Aumack, Sherry
 Austin, Dana
 +Austin, Karen
 +Ayala, Pablo

B
 Bacheller, Orren & Rachel
 +Badger, Kevin
 Baize, Pearl & Kenneth
 Baker, Bernice
 Baker, Karen & Darrel
 Baker, Kim
 Baker, Murdnal & John
 +Baker, Sue
 Baldwin, *Mildred
 Ballington, Sandra
 Bame, Mark & Mitzi
 Banks, Joan
 +Barchers, Richard
 +Barham, Denise
 +Barker, Tamara
 Barnett, Jill & David
 Bartram, Chris & Jerry
 Baskin, Gayle & Richard
 Bass, Teresa
 Bassler, Jeri & Bryan
 Bateman, Terry
 Bauman, Herman & Janice
 Beard, John
 Beck, Charles & Wanda
 Beckner, Jr., Horace & Sue
 Beers, Robert
 Begley, Deborah & Scott
 Beihl, Penny
 +Beltz, Sheila
 Benedicto, Donald
 Benge, Debbie & Robert
 Benggon, Amanda & Wilson
 Bennett, Melisa
 Bennett, Peggy
 Benson, Martha & Wayne
 Bentjen, Joanne & Charles
 Benzinger, Ronald
 Berggren, Mildred
 +Bergherm, Sharon & Brent
 Berry, Daniel
 Bevis, John
 Bicknell, Larry
 +Bidwell, Dale
 Bilbo, Joan
 Bird, Edna
 Bird, Martin
 Bird, Robert
 Bischoff, Frederick
 Black, Patricia
 +Blackwell, Elizabeth
 Blackwell, Sarah

+Blair, Carrie
 Bledsoe, Dianne & Tom
 Bleuer, Judy
 Blondo, Janet & Rick
 Blosser, Brenda
 Blum, Claire & Clyde
 +Blume, David
 Boddy, Lorene
 Bodiker, Marceil
 Bogar, Donald & Sharla
 Bogar, Doris & Larry
 Boggs, Susan
 Boles, Joseph
 Bolton, Lillian
 Bonjour, Richard & Kathleen
 +Borne, Allen
 +Bornhauser, Paul & Jeannette
 +Bornstein, Bonnie
 Bossenberry, Susan
 Bottomley, Florence & Dan
 Bourget, Jose
 Boyd, Kathy
 +Boyd, Martin
 Boykin, Helen & Charlie
 Boyle, Claudine
 Boynton, Ruth & Paul
 Brackett, Jimmie & *Thomas
 Bragg, Richard & Cynthia
 Brand, Jay
 Branson, Judy
 Brass, Ruth & Buddy
 +Brayton, Doris
 +Breece, Dale
 Breece, Kathy
 +Bremner, Jack
 Brendle, Cynthia & Alvin
 Breesee, Sharon & Mark
 Bretsch, Carole
 Brewer, Beryl
 Bricker, Kathy & Douglas
 Bridges, Astrid & John
 +Bridges, Dawn & Robert
 +Brien, James
 Briner, Nancy
 +Brock, Peggy
 Bromback, Jerald
 Brooks, Dorothy
 Brown, Betty & Gary
 Brown, E. Lynn
 Brown, Ellen
 +Brown, Erik
 Brown, Gladys
 +Brown, Hazel
 Brown, Irma
 Brown, Kathie & Bevin
 +Brown, Kenneth
 Brown, Laura
 Brown, Mary
 +Brown, Michelle
 +Brown, Tonya & David
 Brown, Vicki
 +Brownlee, John
 Brownlow, Margaret & Harmon
 +Bruner, Michelle
 Buchanan, Kevin
 Buck, Elsie
 Buckner, Linda & Robert
 +Buerger, Edna
 +Bulled, Julie
 Bunch, Luke & Esther
 Burby, Wade
 Burch, Alta & Tralece
 Burdette, Emma & *Ryan
 Burdick, Shari & Rich
 +Burgal, Cindy
 Burke, Mary & Eugene
 Burke, Roger
 Burke, Theresa & Kenneth

+Burks, Randy
 Burks, Rebecca
 Burnham, Tim & Rhonda
 +Burns, Corinne
 Burns, Kerry & Robert
 +Burnsed, Brook
 +Burnside, Sharon & Hale
 Burnside, Wilberta
 Burtnett, Helen & Frank
 Bush, Thetis & Alan
 +Bushnell, Amy
 Butler, David
 +Butler, Diane
 Butler, Jack
 +Butman, Mary & Harold
 Byers, Mary
 Byrd, Bernard & Mary

C

Cain, Gregory
 Caldwell, Richard
 +Camp, Thomas
 Campbell, Dennis & Shellie
 Campbell, Karen
 Campbell, Melvin & Marjorie
 Cantrell, Jacquelyn
 Capman, Cheerie
 Carballal, Rebecca & Manuel
 +Cardona, Vilma
 +Carey, John
 Carman, Edward
 Carney, Robert
 Carr, Charles & Esther
 Carrier, Donald
 Carroll, Frances
 Carron, Ellen
 Casavant, Jenniter
 Case, Del & Lois
 Cash, Bill
 +Center, Douglas
 Center, Myra
 Center, Pamela
 Cerovski, Edward
 Chaffin, Shirley
 Chaij, Nicholas
 Chambers, James
 Chandler, Connie
 +Charles, Erica
 Chase, Jeanne
 Chase, Michelle & Donald
 Cheever, Becky & Bryan
 +Chen, Dora
 Chesney, Jan & Evan
 Chesnutt, Edna
 +Child, Justine
 Christian, Bertha
 Christiansen, Hugo
 Christiansen, Kathie
 +Chung, May
 Cirigliano, Anthony
 Clapp, Ella & Richard
 +Clark, Cynthia
 Clark, Darwin
 +Clark, Faye
 Clark, Frances
 Clark, Karen
 Clark, Sherri
 +Clark, William
 Clarke, Judy & James
 Clegg, Carolyn
 Clough, Earl
 Coble, Jennifer & Harold
 Coble, Jr., John
 Cochran, Lawrence & Mary
 Cochran, Mary
 +Coe, Laureen

Coffey, Marsha
 Coggin, Sylvia & David
 Collier, Gerorgette
 Collins, Ellen
 Collins, Virginia & Edward
 Colver, Rebecca
 Compton, Marjorie
 Conerly, Donna & Chip
 +Conerly, Kerre
 +Conlon, Sharon
 Connell, Goldie
 Connell, *Waller
 Cook, Linda & Edwin
 +Cooke, Pauline
 Cooper, Gloria & Russell
 Cooper, John
 Corbett, Patricia & Bernard
 +Corey, Pat
 Costello, Lindora & Richard
 Costerisan, Frank
 Coslon, Debra & Jelt
 Colham, Joyce
 Covrig, Gregory
 Covrig, NaLonna & Bryant
 Cowan, Anne
 +Coward, Lee
 Cowley, Myra
 Cox, Douglas & Norvella
 Cox, Melissa
 Cox, Randy & Anita
 +Cox, William
 Crabtree, Judith & James
 Crablree, Myra
 +Crabtree, Tammie
 Crane, Deborah
 Crane, Diane & Donald
 Crawford, Janice & Kevin
 Cress, Lynn & David
 Crews, Lu Ann & Joseph
 +Crismond, Edwina
 +Crismond, Karen
 Crittenden, Jean
 Cromwell, Michael
 Crooker, Marilyn
 Crosby, Bobra
 Crosby, Carol & Timothy
 Cross, Dale
 +Cross, Pamela & Garland
 +Crouse, Twinda
 Crowson, Gene
 Crowson, Linda
 +Cruz, Carlos
 Cruz, Damaris
 +Cruze, Max
 Culbert, Dorothy
 Cullens, Ann
 +Culpepper, M. E.
 +Cundiff, Bob
 +Curran, Susan
 Cushing, Sara
 Cutter, Dorothy & Charles
 Czerkasij, Victor & Rene

D

+DaCosta, Tania
 Dahl, Jeanette
 Dalton, Carolyn & John
 Dalton, Dorothy
 Dalton, Marilee & Mark
 Dameff, Emanuel & Teddie
 Daniel, Gregory
 Daniel, Michele
 Darbo, Doris & Jere
 Darmody, Steven
 Darnell, Margaret & Nolan
 +Darnell, Mary & Robert

Darrach, Rhonda
 Davenport, Shirley
 Davidson, Joy & Bryant
 Davis III, Cosby
 Davis, Charles
 Davis, Diana & Michael
 +Davis, Jack
 Davis, Karen & Henry
 Davis, Robin
 Davis, Terry & Melanee
 Davis, Yulonda
 +Day, Cynthia & Thomas
 +deVries, Frances & Peter
 +deCarmo, Linden
 Decker, Sheri & Mark
 DeLeon, Rolando
 +Delong, Delores
 Dennison, *Ira
 +Denny, Shirley
 Denslow, Anne
 Denl, Bonny
 +DeVasher, Alescia
 Dever, Arlene & Homer
 Dever, Ronda
 DeVries, Julie & Walter
 +Dickerhoff, Steven
 +Dickhaul, Pamela
 +Dickinson, Robert
 Dickinson, Ruth & Robert
 +Dickson, William
 +Dillon, Kathryn
 Dininger, Janet & Edward
 Disbro, Eva Lynne
 +Disla, Edwin
 +Dobias, Stan
 +Dolan, Kristy
 Donaldson, James
 Donesky, Peter
 Dorr, April
 Dos Santos, Roy
 Dover, Wanda
 Dragiza, Daniel
 Dreos, Mary
 Dubose, Robert
 Dubsky, Robert
 Dudley, C. E.
 +Dukes, Deanna
 +Duncan, Stella
 Dunder, Terrance
 +Dunlap, Elizabeth
 Dunn, Maurice
 Dunn, Sheryl
 Dunning, Celia
 Durham, Marjorie
 Durichek, Jr., Peter
 Durkin, Connie & Martin
 Dutton, Joy & George
 Dysinger, Pamela & John

E

Earnhardt, Jeanette
 +Eaton, John
 +Edens, Lauren
 Edgar, Juliann
 Edwards, Gwendolyn & Dean
 Eirich, Paul
 Ellis, Deborah
 Ellis, Jeanine & Gregory
 Engelkemier, Brenda
 +England, Jennifer
 +Epperson, Jim
 Epperson, Troy
 Erskine, Everette
 Erwin, James
 +Estes, Claire
 Estes, Lois & James

Evans, Diane
 +Evans, James
 +Evans, Joahna
 Evans, Patricia & Tom
 Evans, Ted
 +Evans, Virginia
 +Everts, Dave

F

Facundus, Leanne
 Facundus, Rhonda
 Fahnestock, Gayle
 Fales, Julie & William
 Farr, George
 Farr, Henry
 Ferguson, Dana
 Ferguson, Wanda & Charles
 Fields, Sally
 Fillman, Don & Dolly
 Fillman, Jinnie & Noel
 Fishell, Karen
 Fisher, Carolyn & Richard
 Fitzgerald, Douglas & Anne
 Fleming, Gertrude
 +Fletcher, Todd
 +Floyd, Vera & Gilbert
 Fogg, David
 Fogg, Michelle & Mark
 Fogg, Patricia & Michael
 +Foley, Verna & Douglas
 Folkenberg, Audrey & Bob
 +Folkenberg, Kathi
 Forbes, Wanda & Daniel
 Ford, Blanche
 Ford, Heide & Zell
 Ford, Jennifer & Dale
 Ford, Randall & Angela
 Forquer, Robert
 Forsey, David & LaRonda
 Forster, Jean
 Foster, Steven & Patricia
 +Foster, Susan
 Foster, William & Beverly
 +Fouik, Heidi
 Fowler, Lynda & Ronald
 Fox, Carol
 +Frady, Melissa
 Francisco, Linda & Jack
 Franklin, Pal
 Frederick, Gillia
 Frederick, Rosalie & Daniel
 Freeman, Alan & Francie
 French, Sarah
 +Fried, Michelle
 Fritts, Susan
 Frye, Nancy & Elgin
 +Fulbright, Michelle
 Fuller, James
 Fullam, Michelle
 Fuller, Steve
 Fulmer, Bachman
 +Fuqua, Kimberly
 Fulcher, Carol

G

Gabbard, David & Rosa
 +Gadd, Bob
 Gagne, Denise
 Gallimore, Evonne & Lyndon
 Gallion, Neal
 +Galva, Esteban
 Gano, David & Deborah
 Gano, Melissa & Kennel
 +Garner, Lavoy
 Garrett, Jackie & Jeffrey

Garrett, Wanda
 Garver, Beth & Glen
 Gates, Brenda & Douglas
 Gates, Meraldine & Richard
 +Geach, Daniel
 Geach, Mable & Robert
 Geach, Roger
 Gearhart, Joel
 +Gee, Edward
 Gennick, Ramona
 Genton, Lola
 +Gentry, Mark
 +George, Howard
 Gerath, Daniel
 Gershon, James
 Giacomozzi, Edwin & Dorothy

Giang, Sarah
 +Gibson, Donna
 +Gibson, Sheryl
 Gilbert, Russell
 Gilbreath, Karen
 +Gillett, Lisa
 Gilmore, Betty
 +Giorgis, Esaias
 +Gipson, Alicia
 Glander, Genevieve
 Glass, Teria & James
 Glenn, Danette
 Godenick, Mark
 Goeckeritz, Bruce & Laurel
 +Goff, Kathleen
 +Goodge, Kimberly
 +Goodner, Edith & Elbert
 +Goorhuis, Anne
 Graham, Coretta & Obed
 Graham, Tamara
 Grand, Blanca
 +Grange, Jenelle & Jettrey
 +Gravener, Kenneth
 +Graves, Bedi & Sanford
 Graves, Margaret & Otis
 Graves, Mary & Ted
 Graves, Melanie & George
 Graves, Timothy
 Green, Joe
 +Green, Sheri
 Greene, Joyce & James
 Greve, Michael
 +Gribble, Linda
 +Griffin, Elizabeth
 +Griffin, Rick & Bettie
 +Griffin, Tiffany & Larry
 +Griffith, Ruth & Jack
 Griffiths, Nita
 Grimm, Terry & Diana
 +Grisard, Dena
 Grissett, Barbara
 Grisso, Tammie & Greg
 +Grogg, Betty
 Groves, Jane
 Grubbs, Paula
 Grundset, Edgar & Valera
 Guinn, Janye
 Gulley, James
 Gulley, Lori & John
 Gunderson, Eric & Dawn
 Gustavsson, Janiel & Lars
 +Gutierrez, Julia & Eduardo
 Gysel, Cherie

H
 Hagan, B. J.
 Hagen, Mary & Ronald
 +Hagopian, Greg
 Hakes, James

Hale, Joyce & James
 Hall, Diane & Roger
 Hall, Donald
 +Hall, J
 Hall, Joy
 Hall, Wesley
 Hallock, Dora & Lloyd
 +Hallock, R. R.
 Haluska, Marcia & Jan
 Halvorsen, Judy & Warren
 +Hamel, Helen & Lyle
 Hamilton, Cindy
 Hamm, Minon
 Hamm, Thomas
 +Hammond, Kathryn & William
 Hankins, Sharon
 +Hanlin, H. C.
 Hansen, Christopher
 +Hansen, Heidi
 Hansen, Leif & Donna
 Hansen, Robert
 Hansen, Thomas
 Hardaway, James & Marlene
 Harding, Eva & Kenneth
 Harnage, Bruce
 Harper, Marggie
 Harrelson, Amos
 +Harris, Judith & Charles
 Harris, Sharon
 +Harrison, Sherry
 Hartloff, Evelyn & Robert
 +Harvey, James
 Haskell, Billy
 +Haveman, Janet
 +Haveman, Russell
 Haveman, Theodore
 +Hawkins, Carolyn
 +Hawkins, Glenn
 +Hawthorne, Jolynn & Duane
 Hay, Cherry & Bill
 +Haynes, Diane
 Hayward, Joe
 Heath, Earleen
 Helner, Janlyn & Stephen
 Heiney, Michael
 Helligren, Nancy & Morgan
 +Helligren, Rolf
 Henderson, Debra
 Henderson, Kenneth
 Henderson, Mary & O. R.
 Hendry, Malone
 Henning, Linda & Volker
 Henriksen, Glenn
 Henriquez, Bevi & Roberto
 Herbert, Cheryl & Loren
 Herman, Ronald & Linda
 +Hess, Wanda
 Hickok, Linda & David
 Hicks, Rhonda A.
 +Higgins, Karla
 Hilderbrandt, Edward
 Hilton, LaDon
 Hinson, Kathryn
 +Hissong, Jack
 Hobbs, Barbara & Stan
 Hodder, Richard
 Hodges, Mary & Joseph
 Hodgkin, Jeanie
 Hoekenga, David & Carole
 Hогancamp, Robert & Delores
 +Holcombe, Tonya & Randal
 Holden, Paul
 +Holder, Charles
 Holland, Cathy & Lee
 Holland, Glenn & Donna
 Holland, Laurence
 Holland, Reuben
 +Holland, Wesley

Holly, Skip
 Holloway, Marie
 Holmes, Sharon
 Holt, Judy & Benjamin
 Hood, John
 +Hooper, Helen
 Hoover, Debra & Frederick
 Hoover, Paul & Patricia
 Hope, Eric
 +Hornyak, Stephen
 Horton, Marian
 +House, Desiree
 +Housley, Anissa
 Howard, Edgar
 +Howard, Shirley & Art
 Howe, Gary & Bonnie
 Hoyle, Sharon & Jerry
 Hughes, Kelly
 Hughes, Penny
 +Huh, Won-Uk
 Huitt, Micheal
 Hulsey, Harry & Berneice
 Hunt, Dennis
 Hunt, Dolores
 +Hunt, Donald & Teresa
 Hunt, Kalye
 Hunter, Robert
 Hust, Patricia & William
 +Hutton, Phyllis
 Hyde, Sylvia & Bradley

I
 Ingersoll, Karen & Clifford
 +Ingle, Mary
 Irwin, Ruby & John
 Ivey, Alyce
 Ivey, Darlene & Rackley
 +Iznaga, Maria

Jorgensen, Gail
 +Juhl, Kimberly
 +Juhl, Shanda
 Juhl, Shirley & Bruce
 June, Billie
 Jurkiw, Orest
 +Just, Avolt



Donations Exceed \$2.6 Million

Shown with Dr. Don Sahly, a very happy college president, are members of the college's development team which accounted for donations of a record \$2.6 million dollars. Of that total, almost \$1.7 million was designated for the Century II Scholarship Endowment. Standing left to right are Jack McClarty, vice president for development; Verle Thompson, assistant vice president for development; Dr. Sahly, Jeff Lemon, director of development for radio station WSMC; and Dean Kinsey, associate vice president for alumni and public relations. Not pictured, but part of the support team, were William H. Taylor, Pauline Pierson, Cynthia Bietz, Kim Walter, and Jan Haveman.

J
 Jacko, Virginia
 +Jackson, Eleanor & Mac
 Jacobs, Lois & Jamile
 +Jacobson, Patricia
 James, Alma
 Jansen, Paul
 Jarrett, Darla
 Jedamski, Beth
 Jenks, Lowell
 Jennings, Margie
 +Jennings, Melissa
 Jensen, Edith
 +Jensen, Lisa
 Jenson, Laura
 Jelter, Cheryl
 Jobe, Bob
 Johns, Marjory & Kenneth
 +Johns, Teresa S.
 Johnson, Connie & Donald
 Johnson, Conway
 Johnson, Cynthia
 Johnson, Frances & Ronald
 Johnson, Jean
 Johnson, Lillian
 Johnson, Louann
 Johnson, *Marjorie
 Johnson, Priscilla
 Johnson, Renita
 +Johnson, Sharon & Richard
 Johnson, Sylvia
 Johnson, Thelma
 +Johnston, Lloyd
 Jones, Elvine
 +Jones, Harriet
 +Jones, Jeffrey
 Jones, Thomas & Joan
 Jones, William
 Jordan, Annie & Chester

K
 Kanna, Donna & Art
 Kay, Maxine
 +Kelley, Diana & Stephen
 Kelley, Larry
 Kendall, Annabelle
 +Kendall, Chuck
 Kendall, Kathleen & John
 +Kendall, Sharon
 +Kenney, Pamela
 Kenyon, Gerald
 Kepkey, Robert
 Keplinger, John
 Keplinger, Tamara & Edgar
 +Keyes, John
 Kickliter, Heyward & Helen
 Kierstead, Rita
 Kilgore, Paul
 Killen, Mary
 Killion, Nellie
 Kimber, Alice
 +King, Brenda
 King, Gregory
 King, Jane
 +King, Jim & Brenda
 King, Kathleen & Kirk
 King, Mary
 +King, Steven & Cindy
 +Kinney, H. S.
 Kinsey, Scott & Terrie



Alumnus Invests in Future Through Gift Club

Five dozen students volunteered to participate in the Alumni Retirement Gift Club, the brainstorm of Dr. James W. Hickman, left. Dr. Hickman, an alumnus, dentist, and entrepreneur, offered both the concept and funding of the gift club to benefit the college scholarship endowment. Besides an immediate donation to the endowment, his innovative gift is expected to yield over \$1 million at maturity through secured investment policies in the names of specific students. Members of the Hickman family first came to the Collegedale area in the 1920s. Also pictured is President Don Sahly.

Kinsman, Jacqueline
Kirstein, Bill & Pat
Kleppe, Betty
Klingsstrand, Elisabeth & Arne
Klinvex, Elizabeth & Chris
+Knab, Linda
Knaute, Claudia
Knecht, Vickie & Doug
+Kneller, Jennifer
+Knight, Valerie & Stanley
+Korff, Deirdre
Kortf, Eugene
Korp, Rose
Kostenko, Chana & Victor
Koudele, Charles & Betty
Kovalski, Sandra & Gerald
Krall, Jerrery
Krause, Kassandra
+Krause, Linda
+Krause, William
Kreigsman, Irene
+Krein, Nora
+Kruger, Cheryl
Kruger, Thomas & Linda
+Kuhlman, Jeffrey
+Kuhn, Gregory
Kummer, Christine
Kunau, Carol
+Kundinger, Karen
Kutzner, Donald & Maria
Kutzner, Michael & Deann
Kuykendall, Martha & Eugene

Labrenz, Phyllis
Lafever, Joanne & Beecher
Lafever, Susan
Lamb, Edward & Kalie
Lamb, Tonya
Lambeth, James
+Lambeth, Patrick
LaMountain, Lynell & Jennifer
Lampert, Judy
+Lance, Mary
Landess, Susan & Jesse
Landess, Twyla
+Lang, Todd & Lucinda
Lang, Velvel & Robert
Langham, Leanne
+LaPorte, Melissa
+Larsen, Debra
+Lasao, Sixto
+Lastine, Craig
Lastine, Rob & Teresa
+Latham, David
Laubach, Florence & Chauncey
Lauer, Nadine & John
Leach, Roger
Leader, Regan & Mary
+Leavitt, Arlene & Gregory
Leblanc, Argenta & Paul
Lechler, Elizabeth
Ledesma, Vilma
+Lee, Jeong-Bae
Lee, Larry
+Lee, Susan
Leeper, Judy & James
Leeseberg, Tina
+Leggett, Dennis & Constance
Leitner, Jack
+Lemon, Jeff

Lesko, Lenette & Arthur
Lester, Vera
Lester, Vesla
Lewis, Denise
Liebelt, Lonny
Liers, Lou
+Lighthall, Byron
Liles, Joni
Liles, Sadie
Liles, Sandy
Lilly, Marguerite
Lincoln, Gladys & Robert
Lindsay, John
Lingertell, Jeffery
Link, Mary & James
+Linke, Mark
Lippert, Helen
Litchfield, Thelma
Littell, Rhonda & Micky
+Litten, Diane
+Little, Dorothy
+Little, Michael & Viki
Lobdell, Opal
+Loeks, Tina
Logan, Aundrette
Logan, Luane
Loney, Bonnie & Ed
Long, Angeline
+Long, Carole
+Longley, Dot
Loor, June
Loor, Susan & John
Lorenz, Angela
Lorren, Denise
Lorren, Robert & Clymera
+Lovin, Crysta
Lovinggood, Nena
Lowe, Carolyn & Michael
+Lowe, Shelly
Lowery-Dodd, Kalani
Lowman, Marvin
+Ludden, Connie & Lynn
Lukal, Lucille
+Lyle, Mary
+Lyman, Jackie & Ross
Lynn, Robert
Lyons, Edward & Rhonda

M

+Mace, Rick
Machado, John
Mackenzie, Malcolm
MacLafferty, Merritt
+Maddox, Judith & Gary
Madeja, Bonnie
+Magee, Lynda
Magoon, William & Melony
Mahdeem, Har
Mahorney, Sharryn & Barry
Manasco, Debbie
Manley, Edna
+Mann, Ed
Mann, Elizabeth
Manstfield, Garth
Mansfield, Randall
Marin, Jenine
Marin, Raquel
Marlow, Carol
Marquina, Monica
Marschner, Max
+Marshall, Diane
Marshall, Inez & Walter
+Martin, Allan
Martin, Douglas
Martin, Jennifer
Martin, Pamela & Philip

Martin, Scott
Martz, Alma & Jack
Mathews, Kennelth
Mathews, Miriam & Kenneth
+Mathews, Susan
Mathewson, Kellie & Leslie
Matthews, Linda
Mayer, Sylvia
+Mazal, Alfred
+McAllister, Lydia
McBride, Nancy
McCalla, J. E.
+McCaughan, Cindy
McClellan, Daniel
McClung, Michael
McClure, Howard
McComas, William
+McConnell, Jan
McConnell, Steven & Vicky
McCulloch, Nelda
+McDermott, Joseph
McDonald, Vicki & Andy
+McElroy, Sean
+McFaddin, Lynn
McFaddin, Mark & Lisa
McFarland, Dolly
McGhee, Earl
McGlaw, June & Van
McGrady, Jay
McGuire, Rhonda
McKee, Linda & Richard
McKee, Lois
McKenzie, Jr., Eugene
McKenzie, Michael
+McKinney, Karen
McKinney, Mark & Barbara
McKinney, William & Lillian
+McMullen, Ada
+McNeil, Judy
McNutt, Wayne
McPherson, Nanette
McVay, Pamela & John
McWhorter, Kimberly
Meade, Margell & Chas
+Meany, Carla
Meeks, Robert & Lucia
Mensing, Kenneth
Mercer, Ruth
Merritt, Cheryl
+Mesh, Deana
+Metzger, Gail
Meyer, Mertice
Michaelis, Naomi & Charles
Michals, Joylynn
Middaugh, Patsy
Millburn, Bobbie & Dennis
+Miller, Barbara
+Miller, Gayle
Miller, Jeanne
Miller, Kimberly
Miller, Marty & Gale
Miller, Susan & George
+Miller, Victoria
Millet, Jean
Mills, Joyce & Brooker
Minder, Patricia & Nicholas
Minear, Timothy & Joni
Mirande, Valerie & Frank
Mitchell, Betty & Marshall
Mitchell, Cynthia & Brian
+Mitchell, Sara
Mizelle, Catherine
Mock, Eric
Mollenkopf, Dawn
+Monen, David
Montaperto, Vito
+Monterde, Scott
Montgomery, Jeanne

Montgomery, Leigh
Moore, Carolyn
Moore, Kay
+Moore, Tom
+Morey, Caryl
Morford, Mary & Alvin
+Morgan, Douglas
Morgan, Fred
Morgan, Karen
Morgan, Kevin
Morris, Sharon
+Morton, Amelia
Mole, Donald & Rene
+Molschiedler, Kevin
+Mouniz, Ricky & Pam
Mullinax, Gayly & David
Mullins, Billy & Vicki
Mun, Jimmer & Ida
Muncy, Gerald
Mundy, H. Susi & Bill
+Murphy, Jean
Murray, Rachel & Sidney

N

Nall, Andrew
+Nash, Jon & Alicia
+Nash, Patti
+Neeley, Wendy
Neet, Kenneth
Negron, Dennis
Nelson, Kalrina
+Nelson, Keilh
+Nelson, Louis
Nelson, Ronda
+Nelson, Thomas & Karen
Nesbitt, Ethel & William
Nestell, Inez
+Newball, Kelli
+Newball, Kimberlee
Newbern, John
Newcomb, Joe
+Newell, Annette
Nicholaides, Evelyn & Mitchell
Nicholaides, Stephen
Nicholson, Marilyn
Noble, Dorothy
+Nooner, Veda
Norman, Rosanne
Northrop, LaVerne & Robert
+Norton, Kenneth
Norton, Peggy & Jim
Nosworthy, John
Numbers, Ronald
+Nunes, John & Tamala
Nutt, William
+Nyirady, Laura & Stephen

O

O'Brien, John & Georgia
O'Day, Carol & Patrick
Oakes, Virginia & William
Odom, Myrna
Oetman, Bonnie & Harvey
Off, Juvernia
Olmstead, Lila
Olsen, Allen
+Olson, Clifford
Orr, Jack & Virginia
+Osborn, Jeffrey
Osborne, Candace
Osman, Virginia
Ott, Helmut & Myrna
Owens, Gerald
Owensby, Peggy
Oxberger, Everett

L

Labrador, Juan

P

Paden, Raymond & Carolyn
 Palmer, Ted & Elaine
 Palmour, Margaret
 Parfitt, Gary & Janice
 Park, Betty
 Parker, Roland
 Parks, Debra
 Parnell, Jack
 +Parrick, Ardyth
 Parrish, Donald
 Partlo, Michael
 +Patel, Dinesh
 Patsel, Wilford
 Patton, Kimberly & Richard
 Pawly, Harry
 Paxton, Carolyn
 Payne, Benita
 +Pedersen, Maxeen
 Peeke, Marilyn & John
 Peel, Edna
 Pegel, Rachel
 Pendley, Louise
 Pennington, Betty & Stanley
 Pennington, Kevin & Susan
 Perry, Rebecca
 +Peters, Christie
 Peters, Lori
 Peterson, Betty & Garland
 Pethel, Michael
 Petthey, Anne & Galen
 +Pettibone, Dennis
 +Petty, Glenn
 +Petty, Mary & Frederick
 Pflugrad, David & Doina
 Phalen, Ruby
 +Phillips, Carolyn
 +Phillips, Frances
 Phillips, Lorraine & Ed
 Philpott, Frankie
 Piatt, Wayne & Linda
 Pickell, Ronald
 Pierce, Beatrice & Charles
 +Pierce, Elmer & Dorothy
 Pierson, John & May
 Pilon, Mae & Jerrell
 +Pittman, Robert
 Platkowsky, Jo Ann
 Platt, Barbara & William
 Pleasants, Edith & Lloyd
 Pleasants, James
 Poist, Nancy
 Polivka, Lora
 Polizzi, Tissy
 Pollett, Brian
 Pomeroy, Richard
 +Poole, Joseph
 +Popular, Carmen
 Porter, Terena & Kenneth
 Pottle, Ted
 Potts, Cynthia & Frank
 Potts, Keith
 Powell, George
 +Powell, LaShawn
 Powell, Maureen
 Powell, Shelly & Kevin
 Powers, Sharon
 Powery, Glover
 +Pragnell, Susan & Robert
 Priest, Barbara & Joseph
 Pritchett, Linda & Larry
 Proffitt, Eddie & Diane
 Prosser, Ruth
 +Purple, James
 +Pyke, Bill

Q

Quick, Sr., James

R

Radov, Natalie
 Rahn, Vicki & Larry
 Ralls, Jane
 +Ramos, Joeme
 Ramsey, Anne
 Ramsey, John & Linda
 Randolph, Dennis
 Randolph, Karen & Gary
 Randolph, Linda
 Randolph, Pamela
 Rathnam, John
 +Rauch, Stephanie
 +Raulston, Lucinda
 Ray, Herman
 Reading, Dale & Ronald
 Reagan, Jena
 Rebman, Renee
 +Redden, Rhonda
 Reece, Delphyne
 +Reece, Randy
 Reese, Henry
 Reeve, Charles
 +Reinhard, Ellen
 Reinsch, Deborah
 Remmers, Carolyn & Eugene
 Rench, Sandra
 +Reverdilo, Ronald
 +Reyes, Pearl
 Reyna, Wilfred
 +Rhinehart, Volicena
 +Rhoney, Mary
 Richards, Joi
 Richards, Wesley
 Rickaby, Linda & Jerry
 Rilea, Florence
 Rimer, Fred
 +Rimer, Jerry
 +Rimmer, James
 Ringer, Alvin
 Ringer, Carol & Benjamin
 Ringer, Diane
 +Ringer, *Margaret
 Ringstall, Mykal
 Ritzler, Pamela
 +Rivera, Deirdre
 Roach, Robert
 Robb, Mark & Judy
 +Robbins, Jim
 +Robbins, Mary & John
 +Robbins, Mildred & Harold
 Roberts, Anita
 Roberts, David & Mary Ann
 Roberts, Donna
 Roberts, Donna
 Roberts, Jack
 Roberts, Lana & James
 Robertson, Charles & Charlene
 Robertson, Debi
 Robertson, Della & William
 Robertson, Earl
 Robertson, Kathleen & Phil
 Robertson, Sherry
 +Robertson, Terry
 Robinson, Elenora
 Robinson, Taletha
 Rodacker, Pam
 Roddy, James & Norma
 Rodgers, Cindy & Robert
 Rodgers, Denise & Ronald
 +Rodriguez, Adelmo
 Rodriguez, Julio & Maria
 Rojas, Odil

Romans, Robert
 Ronning, Lori
 Roper, Eleanor
 +Rose, Melissa
 +Rose, Sherrill
 Rourke, Drury
 Rouse, Byron
 Rouse, Stanley
 Rowlett, Phyllis
 Roy, Harold
 Rul, Jane & Warren
 Ruhling, David & Dianna
 Rumsey, Marsha
 Rumsey, Shirley & Greg
 Runyon, Clyde
 Russell, Kathy
 Ryals, Virginia & John
 Ryan, Jane
 Ryder, Eldon & Vanessa

S

+Sadler, Brooke
 +Sahly, April
 Salhany, Alan
 Salhany, Dorothy & Phaize
 +Salhany, Earl
 Salhany, Karen
 Salmons, Joan
 Salsberry, Glenda
 Sammer, Harold
 Sanderford, Richard & Kathy
 +Sanders, Melanie
 Saphiloff, Andranik
 +Sasser, Janna
 Sasser, Pat
 Sawyer, Lori
 +Sawyer, Tammy
 Sawyer, Ted & Kathleen
 Schey, Diana
 Schiefer, Kurt
 +Schmidt, Laurie
 Schneider, Kathryn
 Schoen, Valentin
 Schomburg, Sheila
 Schomburg, William
 Schooler, Nora
 +Schopp, Richard
 Schroeder, Karl-Heinz
 +Schutte, Harold
 Schutte, Sherri & Tad
 Schwab, Walter
 Schwinn, Karl & Katie
 +Scoggins, Lola
 +Scott, Elizabeth
 Scott, Lori
 Secrist, Nancy
 Seek, Dale
 Seek, Vesta
 Seeley, James & Eileen
 Seeley, Pam & James
 Sellers, Lenette
 Serikaku, Dianna & David
 Serl, Connie
 +Sermersheim, Tami
 Servoss, Larry
 Setters, Kimberly
 Shaler, Carrie
 Shafer, Edwin
 Shain, Jacquelyn & Martin
 Shank, Twyla
 Sharley, Harry
 +Sharpe, Becky
 Sharpe, Kent & Lisa
 Shavlik, Deborah
 Shaw, Ann & Kenneth
 Shaw, Kevin & Terry

Shaw, Terry
 Shearer, Kimberly
 Sheffield, Amy
 +Shelton, Virginia
 Shepard, Richard
 +Shepherd, Paul
 Sheram, Imogene
 Sheridan, Timothy
 Sherman, Roby & William
 +Sherwin, Richard & Sheila
 Shields, Chaz
 +Shields, Daniel
 Shields, Jonathan & Maureen
 Shields, Ruby
 Shields, Sondra & David
 Short, Janice & Donald
 Shorter, Louise & Roland
 Shoup, Betty
 +Shoupe, Roy
 Showalter, Darlene
 Shrader, Sandra & John
 Shreve, Ruby
 Shull, Debra
 Sica, Ruth
 Siddall, Rodney & Diane
 +Sigmon, Kimberly
 Sigsworth, Candis & Dean
 Siler, June
 Silver, Bob & Patricia
 Simmons, Deborah
 Skantz, Ingrid
 +Skeggs, Sandra
 +Skellely, John
 Slate, Verna
 +Sliger, Kenneth & Marilyn
 Smart, Connie & Leslie
 Smith, Carl
 Smith, Carol
 Smith, Cherilyn & David
 Smith, Gilbert
 Smith, Gladys & Lewell
 Smith, Juanita & David
 Smith, Linda
 +Smith, Lyman
 +Smith, Marilyn
 +Smith, Nancy & Jerry
 +Smith, Norma
 Smith, Robert & Susan
 Smith, Rochelle
 Snide, Hazel
 Snow, Angela & Timothy
 +Snow, Danny
 Snyder, Sharolyn & Brent
 Sokolies, Cynthia
 Somers, David
 +Soto, Frank
 Soule, Helen & Joseph
 Soule, John
 Sowder, Marilyn & Steven
 Spears, Larry
 Spears, Marcie z
 Sperrazza, Jackie & Robert
 Spicer, Eldon & Anna
 +Spilovoy, Robert
 Spore, Chrystal
 Springett, Lisa
 +Stagg, Art & Karyn
 Stair, Kay & Donald
 Stampfli, Rose
 Stanaway, Barbara
 Stanlord, Sylvia
 Starkey, Darrel & Connie
 Starkey, Tamara & Dennis
 Starr, Dorothy & Wilfred
 Steele, Dena
 Steen, James
 Steinman, Donald
 Steller, Joann

Stepanske, Jeanette & Bruce
 Stephens, Darryl
 Stephens, Frederick
 +Stephens, Julie
 Stephenson, Dorothy
 +Stevens, Gail
 Stevens, Geraldine
 +Stevenson, Jo-Anne
 Stewart, Eleanor & Ervin
 +Stoddard, Virginia
 Stone, Francis
 +Stone, Jeff & Cathy
 Stone, Thomas
 +Straight, Carol & William
 Strang, Wilson & Ruth
 Strawn, Evelyn & Donald
 Streeter, Carla
 Strickland, Faye
 +Stringer, Joyce
 Strong, Dixie & Bill
 Stubbs, William & Barbara
 Suarez, Judy
 +Sudduth, Jason
 Sudduth, Wayne
 +Sue, John
 Summitt, Billy
 Sutherland, Michael
 Swafford, Evelyn & John
 Swanson, Delbert & Janice
 +Swanson, Lee-Anne
 Swayze, Carol
 Swinson, Charles & Elvie
 Swinyar, Carol & Gary
 +Switek, Richard
 Szczepanski, Ilesia

T

Tait, Debbie & Stanton
 Talmage, Metha
 +Tale, Gayle
 Tavener, Mary
 Taylor, George & Margaret
 +Teeter, Penny
 +Tellefsen, Ken & Lynette
 Tennyson, Dianne
 Terrell, James & Sharon
 Terrell, Kara
 +Thatcher, Jason
 +Thayer, George
 +Thedford, Kim
 +Thelander, Anne
 Theus, Ted & Brenda
 Thiel, Nancy & Mitchell
 Thimsen, William
 +Thomas, Cindi
 +Thomas, Deborah
 +Thomas, Isabella
 Thomas, Karen
 Thomas, Lorraine
 Thompson, Deborah & Verle
 Thompson, Roy & Carolyn
 Thornton, Richard
 Thum, Paula
 Thurber, Gary & Diane
 Thurber, Patsy & John
 Tingle, Janelle
 +Tishaw, Tamara
 +Toebe, Gail
 Tol, Carol & Bill
 Tolbert, Malia & Gary
 Tolentino, Arleen
 Tompkins, Joel
 +Toppenberg, Kevin & Dee Dee
 Travis, Aline & Joseph
 Trim, Alice
 +Truax, Allen

+Tschickardt, Monica
 +Tucker, Dean
 Tucker, Eddie & Doris
 Turner, Walter & Grace
 Tuttle, Jr., Grant & Pamela
 +Tuuri, Mark

U

Ugarte, Randi
 +Ulloth, Sarah & Dana

V

Vance, Kenneth
 Vanerwegen, Sandra & Jerry
 +Varghese, Caroline
 +Vafel, Sabine
 Vega, Calvin & Sally
 +Velbis, Cenon
 Velbis, Kimberly & Erwin
 Veltman, Fred & Renie
 +Veltman, Jane
 Viar, Sue & Paul
 Villars, Kelly
 Vincent, Cecilia & Ronnie
 +Vinglas, Robert
 Vining, Ann & David
 Vollmer, Donald
 +Vollmer, Sandra & James
 +Von Henner, Charles
 Von Kriegelstein, Doug
 von Maack, Jennifer
 Vonhof, Leonard
 Voorheis, Alice
 Voorheis, Denise & Byron
 +Vukshich, Natalia

W

Wade, Charilyn
 Wade, Paula & Robert
 Wagner, David
 Wagner, Rita
 Waite, Kindra
 Walden, Relious & Beverly
 +Waldrop, Mark
 Walker, Merry
 Walker, Stanley & Eleanor
 Wallack, Marijane
 Waller, Amy & David
 +Walls, Gary & Connie
 Wampler, William
 Warner, Carol
 Warren, Amanda & Grayson
 Warren, Dawn
 Washington, Monese
 Waters, Candace
 Waters, Cora & Bill
 Watkins, Norma & Charles
 Watson, James
 Watson, Lanier
 Walt, Crystal & Timothy
 Webb, Erma
 Webster, Franklin
 +Welch, Ann
 Welch, Brenda
 Weller, Cynthia
 Wenle, David
 +Werner, Todd
 Wessman, Tim
 +Westbrook, John

Weimore, Lynne
 Whaley, Joy
 Wheeler, Alice
 Wheeler, Ann & Ben
 +Wheeling, Verlene & David
 +Whidden, Barbara
 Whidden, Bruce & Christine
 Whidden, Woodrow
 +White, William
 +Whitehouse, Thomas
 +Whitlow, Daniel & Lisa
 Whitt, Alice
 Whittaker, * Mildred
 Wichianprecha, Iris
 Wiehn, Ruth & Roger
 +Wiik, Terry
 Wilcox, Allen & June
 Wilcox, Kirk
 Wildes, Ethel
 +Wilkins, Todd
 Wilkes, Clarice
 Wilkes, Gilbert
 Wilkie, Kathryn
 Wilkinson, Stanley
 Will, Elaine & Kenneth
 +Will, Jackie
 Willett, Gregory
 Williams, Carol & Walton
 Williams, Cindy & Haskell
 Williams, Gary
 Williams, Josie
 Williams, Karen
 Williams, Larry
 +Williams, Laurie
 Williams, Nathan & Donna
 Williamson, Grayce
 Willis, Betty
 Willis, Mary
 Wilson, Barbara & Fred
 +Wilson, Nancy
 Wilson, Thelma & Elden
 Wilt, Albert
 +Wilt, Gary
 +Wilt, Terry
 +Winkler, Lora
 Winsted, Beverly & Bailey
 Winters, Virginia
 +Wise, Heather
 Wohlers, William & Rita
 Wolcott, Linda & James
 Wolcott, Nannette
 Wolf, Donald & Joelle
 Wolfe, John
 +Wolfe, Kimberly
 Wood, Izora
 Wood, Janet & William
 Wood, Joyce
 Wood, Michael
 Woods, Esma
 Workman, Dorothy & Ralph
 +Worley, William
 Wortham, Emma
 Wurl, Loel & Marilyn
 Wynn, Kenneth

Y

Yeoman, Greg & Cheryl
 +Yip, Lesa
 Young, Brenda
 +Young, Corrine

Z

Zalabak, Wilma

Zanes, Joy & Newton
 Zeigler, James & Freda
 +Zerbe, Arlene
 +Zhi, Jiao
 Zill, William
 Zoerb, Everett & Ruth
 Zollinger, Johnnie & Terrell
 Zollinger, Le & Virginia
 Zumstein, Linda & Larry

ORGANIZATIONS

CORPORATIONS

Adventist Health System/Sunbelt
 Adventist Living Centers
 American National Bank
 Angelica Linen Service
 Baldwin Piano & Organ Co.
 Barnes Global Network
 BFI Waste Systems of Tenn.
 Bishop Baking Company
 Bowman Financial Group
 Bunge Edible Oil Corp.
 C & S Produce Company
 C.Y., Inc.
 Caire & Graugnard
 Cargill Incorporated
 Central Soya
 Chambliss, Bahner, & Crutchfield
 Chattanooga Coca-Cola Bottling
 Co
 Chattanooga Ear, Nose & Throat
 Commonwealth Insurance
 Continental Specialty Co.
 Dixie Portland Mills
 E A A Properties
 First American
 First American National Bank
 First Tennessee Bank
 Goldman Sachs Money Markets,
 Inc.
 Greenville Community Concerts
 Hickman Enterprises
 IBM, Inc.
 John Hicks Olds-GMC Truck, Inc.
 Joseph Decosimo and Co.
 Lee-Smith International, Inc.
 Ling-Faidley Company
 Marlin Marietta
 Massey-Fair Ingredient Sales
 Mayfield Dairy Farms, Inc.
 McKee Baking Co.
 McNeilus Truck & Mfg. Co.
 Mountain City Electric
 North American Credit Services
 Pet Incorporated
 Pioneer Bank
 Printpack, Inc.
 Puzzles Pizza
 Quest
 R. J. Reynolds
 RTC Communications Systems
 Shottner Industries
 Sonstegard Foods Company
 Southeastern Electric Supply Co.
 Southern Foundry Supply, Inc.
 Sovran Bank
 Stowers Machinery Company
 T. U. Parks Construction Co.
 Tennessee Valley Sales Co.
 Utility Trailer Sales of Tenn., Inc.
 Worthington Foods, Inc.
 Ziegler Securities

FOUNDATIONS

AT&T
 Benwood Foundation, Inc.
 Chatlos Foundation
 Exxon Education Foundation
 HCA Foundation
 Johnston Trust
 K. W. Grader Foundation
 Pioneer Foundation, Inc.
 Price Waterhouse Foundation
 Procter & Gamble Foundation
 Prudential Foundation
 State Farm, Inc.
 Thomas Staley Foundation
 Wm. Randolph Hearst Foundation

RELIGIOUS ORGANIZATIONS

Georgia Cumberland Association
 Carolina Conference of SDA
 Collegedale SDA Church
 First SDA Church
 Florida Conference of SDA
 Ft. Walton Beach SDA Church
 Geo-Cumberland Conference of SDA
 Ken-Tenn. Conference of SDA
 Pennsylvania Conference of SDA
 Southeastern Conference of SDA
 Southern Union Conference of SDA

CONSORTIA

Committee of 100
 Tennessee Independent College
 Fund

GROUPS

Downtown Lions' Club

ESTATES

Reynolds, Maurine
 +Groff, Marguerite

COMMITTEE OF 100

Adam, John
 Anderson, Eugene
 Andrews, Frances
 Baker, Sue
 Barto, Michael
 Berner, Perry
 Blair, Buddy
 Blair, Elsie
 Blair, Mardian
 Bottomley, L. Neall
 Bouland, T. G.
 Bowen, Dewitt
 Bowers, Robert
 Boyd, Velma
 Boyle, Jim
 Brooks, Philip
 Burdick, Al
 Burdick, Bille
 Burdick, Paul
 Butterfield, Arthur
 Byrd, Cookie
 Campbell, Thomas
 Cason, Bud
 Castleberg, David
 Castleberg, Evelyn
 Chastain, Chalmer
 Clark, Jerome
 Cothren, Edythe
 Cothren, Frederec
 Cowdrick, Grace
 Cowdrick, Jesse
 Cross, Jessie
 Cummings, Des
 Cushman, Willis
 Dart, Mona
 Davis, James
 Davis, K.R.
 Davis, Scott
 De Vasher, Bernard
 Downs, Myrtianne
 Downs, Nevin
 Durichek, Helen
 Elkins, Randy
 Farrow, Joe
 Fleming, Jr., Chick
 Friberg, Jr., Russell
 Fuller, Fred
 Fuller, Forrest
 Garner, Julius
 Garver, Phillip
 Graves, Charles
 Hall, Albert
 Hall, Stephen
 Hamilton, Ted
 Henriksen, David
 Howell, Walter
 Huenergardt, Howard
 Hulsey, Bill
 Hyde, Allan
 Iles, Bill
 Iles, Jean
 Jacobs, Carl
 Janzen, Wayne
 Jarrett, David
 Jensen, Robert
 Johnson, Anna
 Johnson, Harold
 Johnson, Oscar
 Kerr, Elton
 Lacey, Charles
 Lacey, Gloria
 Leland, John
 Levering, Thelma
 Ludington, Cliff
 Mallernee, Rollin
 McClarty, Jack
 McElroy, Buddy
 McGhinnis, Bill
 McKee, Debra
 McKee, Ellsworth
 McKee, Jack
 McKee, D. D.
 McKinney, J. R.
 McNeilus, Denzil
 Meister, Adam
 Merchant, Bob
 Metcall, William
 Michals, Herbert
 Murphy, Bob
 Murphy, Harvey
 Nelson, William
 Neyman, Parker
 Palmour, Frank
 Pendleton, Leslie
 Preston, Forrest
 Preston, Winton
 Reid, Edward
 Reilsnyder, Edward
 Rimmer, Wayne
 Ringer, Bruce
 Rogers, Herbert
 Rogers, Herbert
 Schmidt, Ehrich
 Scott, Bob

Sharp, Margaret
 Shaw, Rahn
 Shim, J. T.
 Simmons, Marion
 Sines, John
 Sloan, Thyra
 Smith, Earl, Jr.
 Smith, William
 Sommerville, Lewis
 Spears, Don
 Spears, Kenneth
 Student Association
 Taylor, Dennis
 Taylor II, William
 Taylor, Victor
 Taylor, William
 Ulmer, Martha
 Ulmer, Sanford
 von Henner, Chan
 Wagner, John
 Waller, Louis
 Walter, Elden
 Wells, Harley
 Wells, Laurel
 Westbrook, John
 Wheeler, Ira
 Whidden, Charles
 Wilkens, Bonnie
 Williams, James
 Winters, David
 Wood, Nelli
 Wright, Clara

Container Corporation of
 Cowart, Lee
 Crosby, Bobra
 Cruze, Max
 Cummins South Inc.
 David Michael & Company, Inc.
 Davis, Jack
 DeLeon, Rolando
 Delkor Industries Inc.
 Delong, Delores
 Dobby Packaging Machinery
 Fidelity Sales Corporation
 Gentry, Mark
 George Harnett & Company
 Gilco East Inc.
 Gravener, Kenneth
 Hall, J. D.
 Hanlin, H. C.
 Harvey, James
 Hetzler Brokerage Company
 Holland, Cathy
 Imperial Holly Corporatio
 J. R. James Brokerage Co.
 Kinney, H. S.
 Krause, William
 Kuhn, Gregory
 Lance Inc.
 Lawrence Parry, Jr. Inc.
 Lee-Smith Internat'l Inc.
 Magoon, David
 Malgadey, Beth
 Massey-Fair Ingredient Sales
 McClarty, Wilma
 McKee Audit Department
 McKee, Ellsworth
 McKee, O. D.
 Meyer, Mertice
 Miller, Barbara
 Miller, Victoria
 Mills & Lupton Supply Company
 Mondo Baking Company
 Monroe, Terese
 National Oats Company
 O'Connor & Company Inc.
 Olsten - Jo Ann Forman
 Ownbey Sheet Metal Company
 Pet Incorporated
 Phillips, Carolyn
 Pioneer Foundation Inc.
 Planters LiteSavers Company
 Printpack Inc.
 Prophecy Countdown Inc.
 Raulston, Lucinda
 Reverdito, Ronald
 Richards, Evonne
 Robbins, Jim
 Robert J. Sudderth, President
 Rock-Tenn Inc.
 Rushing, Jan
 Shelton, Virginia
 Shepherd, Paul
 Shoffner Industries
 Skelley, John
 Smith, Norma
 Sonstegard Foods Company
 Stoddard, Virginia
 Stroup's Brokerage Company
 Three Angels Broadcasting
 Tucker Wayne/ Luckie & Co
 Tuttle Jr., Grant
 Whidden, Jewel
 Williams Typesetting Company
 Wilt, Albert
 Wilt, Gary
 Wilt, Terry
 Zapara, Tom

Class Participation in Alumni Loyalty, 1989-90

Class	Class Agent	Donors	Percent	Amount
21 - 32	Edythe Cothren	73	35.3	35,634.50
33 - 37	Ercel Bennett	27	55.1	1,917.50
38 - 40	John Goodbrad	27	47.4	1,450.00
41 - 43	Clifford Ludington	23	47.9	587.50
44 - 46	Vern Dortch	17	45.9	705.00
47 - 48	Robert Wood	23	50.0	1,010.00
49	Frances Andrews	21	60.0	3,056.50
50	Roscoe Mizelle	14	31.8	1,755.00
51		25	45.5	1,612.54
52	Layton Sutton	16	38.1	740.00
53	Wallace "Buddy" Blair	34	48.6	2,035.36
54	J. W. Henson III	20	51.3	5,647.00
55	Grady Smoot	16	30.2	7,530.00
56	John Thurber	11	28.9	776.50
57	Ron Rogers	15	34.9	5,352.50
58	Jan Rushing	16	32.7	1,360.00
59	Robert Burchard	11	31.4	4,132.50
60	James "Buddy" McElroy	20	32.8	5,760.00
61	Dan Rozell	15	23.8	1,570.87
62	James Culpepper	21	30.9	1,632.86
63	Dwight Hilderbrandt	23	23.5	6,462.50
64	John Fowler	31	37.3	2,097.50
65	Herbert Coolidge	34	34.0	3,530.16
66	John Newbern	32	26.4	2,175.00
67	Robert Bolton	40	32.3	2,036.50
68	George Powell	31	21.2	1,927.50
69	Bill McGinnis	43	26.5	2,051.20
70		48	25.8	5,931.48
71		26	15.2	2,050.00
72	John Loor	46	24.5	6,407.86
73	Ben Kochenower	41	20.8	2,502.86
74	Joyce Cotham	44	24.4	1,330.00
75	John Beckett	44	19.2	1,665.00
76	Dale Townsend	49	18.2	1,365.36
77		48	20.3	2,704.50
78	Vinita Sauder	53	18.3	1,731.72
79	Jim Closser	62	20.8	4,737.50
80	Debbie Tate	42	15.1	1,475.00
81	Val Miller	42	15.8	7,077.50
82	Brent Barrow	60	19.9	2,866.38
83		35	11.0	3,250.36
84	Fred Armstrong	48	14.7	8,012.50
85	Doug Gates	42	13.4	855.00
86		42	16.0	777.50
87		37	14.7	3,000.00
88		39	14.1	3,150.00
89		42	18.2	3,580.00
90	Senior Class	207	100.0	4,200.00
	Subtotal --- Graduates	1776		\$173,217.01
	Former Students	330		37,781.00
	Total Alumni Loyalty	2106		\$210,998.01

TRIBUTES

Gifts given by Harold Johnson in honor of:

Walter Alexander Connell
 Mildred Marie Baldwin
 Mildred Whittaker
 Marjorie Johnson
 Ira J. Dennison

Gifts given in honor of Ruth McKee

ABI Food Services
 Advance Paper Company
 Advertising Ideas Inc.
 Akers, Norma
 American Engineering Corp
 APV Baker Inc.
 Avondale Elementary
 Baker, Sue
 Bremner, Jack
 Brock, Peggy
 Brock, Richard
 Burns Intl Security
 Caire & Graugnard
 Cargill Incorporated
 Cargill Incorporated
 Carpenter, Doris
 Caruthers Raisin Packing
 Central Soya
 Chambliss Shelter Child's Home
 Chambliss, Bahner, Crutch
 Christian Brokerage Compay
 Chung, May
 Clark, William

The information contained in this special report covers the 1989-90 fiscal year, specifically gifts made between July 1, 1989 and June 30, 1990. The criteria for reporting class participation gifts specifies a maximum of \$5,000 and a minimum of \$10 for any donor. The Gift Club listing of names includes donors since July 1, 1987, whether the gift was cash, property, or gifts of future value.

Total donations from alumni and friends were a record \$2,624,503. Of that amount \$227,994 came from alumni for all purposes. Donations from the College Board totaled \$1,925,830; from parents and friends: \$159,360; from businesses and other organizations: \$300,607; from employees: \$10,711.

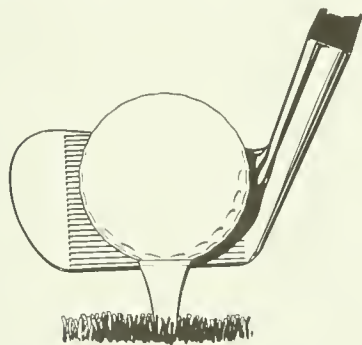
For purposes of reporting, the following hierarchy is used: (1) board, (2) alumni, (3) parents, (4) employees, (5) friends, (6) consortia and organizations such as foundations and businesses. For example, if a donor is an alumnus, a parent, and a board member, the gift is reported as a board donation. If the donor is an employee and an alumnus, the gift is reported as an alumni donation. . . . Our heartfelt thanks to all for your gifts.

Golf Planned for Homecomers

Southern's first Alumni Golf Classic is slated for Friday, October 26, at Nob North, a beautiful course in north Georgia's rolling hills about 20 miles southeast of the college.

"Last year we asked alumni at homecoming to fill out a questionnaire about activities they would like to see the Alumni Association sponsor. A lot of people indicated a desire to play golf on alumni weekend," explained alumni director Dean Kinsey. "So the Alumni Executive Committee asked Verle Thompson to organize the tournament and David Winters to assist."

According to Thompson, the format will be a two-man select shot tournament. "We can run the tournament with as few as 32 participants," Verle commented. "But if we get 100, we can reserve the whole course for the day. One




advantage of reserving the course is that we could begin with a shotgun start, and that way everyone will end at about the same time. This makes giving the awards so much simpler and more interesting."

"We want to keep the cost of participation as low as we can," Verle continued. "There is no fee to participate. A player's cost of \$25 covers green fees and an electric golf cart. The Alumni Association will raise funds to purchase the awards and cover other incidental costs."

The Golf Classic will be open to all alumni and friends of the college. The tournament organizers assume

that most people who play will enter as two-person teams, and the team will play in a flight (category) according to their playing ability. If 60 to 100 people play, there will be three flights; if fewer play, there will be only two flights.

"In order to be assured of a place in the tournament, reservations must be in the alumni office by October 15," stated Kinsey. "With

your check for \$25, the organizers also need to know your partner's name and your handicap or average score for eighteen holes. If you do not have a partner, Verle and David will try to place you with someone to make up a team. But remember, October 15 is the date when we need to know who the players are so we can finalize the contract with the golf course." 

Business Alumni Consolidate, Fund Marketing Professor

When Southern's business department alumni saw a need, they set about to do something. The need they saw was to help make a good department even better. What they did was to follow the old adage "Put your money where your mouth is."

The group has come a long way since November 1987 when Bert Coolidge, '65, and Carl Shaw, '78, first met with department chairman Dr. Wayne VandeVere to assess present and future needs of the department, and to think through the "how to" of getting business department alumni involved with helping meet those needs.

A second meeting was scheduled for January 1988 and included Dr. Sahly, Southern's president, and other members of the administrative team. Following the suggestion of the ad hoc group of Coolidge, Shaw, and Vande Vere, the administration approved the idea of forming an alumni sub-group, the Business Alumni, and gave permission for them to become involved in fund-raising specifically for the business department.

On Oct. 27, 1988, at a supper meeting for business department alumni, this organization took on its formal shape. Ben Kochenhower, '73, was elected president and Bert

Coolidge, '65, secretary/treasurer. Other members of its board are Kimberly Miller, '80, Peter Malgadey, '73, Jay McElroy, '88, Ellsworth McKee, '54, Jim Morris, '72, Ed Neal, '70, and Ken Spears, '66. Peter Malgadey represents this alumni sub-group on the Alumni Association Executive Committee.

At the Oct. 29, 1989, breakfast meeting, Robert Hansen, '62, was honored as alumnus of the year.

The goals of the Business Alumni are to (1) support and enhance the business department, (2) be active in recruiting top notch students for the department, and (3) assist with the department's move toward teaching the fifth year in accounting.

The alumni have been hard at work. Last year they committed to funding the salary for a marketing instructor so the department can offer a major in marketing. They have also assigned class agents to help with fund raising. Last year, 69 alumni became active, supporting donors. "This alumni organization is extremely important to the further development of the college business department," stated Dr. VandeVere, "It's exciting to see what has already happened and to anticipate what they can do for the future of this department and Southern College." 

Δ **Nancy Crist** joins the Southern College nursing faculty at the Orlando campus. On the SC faculty from 1972-76 and 1978-79, she graduated with her B.S. from Walla Walla College in 1971 and is completing her master's degree at the University of Florida.

Δ **Bob Moore** has been in Athens, Ga., for the past four years while earning his doctorate in mathematics. He has returned to the campus as an associate professor in the Mathematics Department.

Δ **Mildred Muniz** comes to SC's Orlando campus from Puerto Rico where she received her B.S. degree from Antillian College in 1987. She is a master's candidate from Catholic University in Puerto Rico.

Δ **Joy Parchment** has joined the Orlando campus nursing faculty this semester. She graduated from Andrews University in 1978 with a B.S. degree and completed her master's at Anna Maria College in Paxton, Massachusetts.

Δ **Helen Pyke** has served on Southern's faculty for the past three years as contract teacher and is now teaching a three-fourths load for the English Department. She has been a professional writer for 30 years. She currently has a narrative book at the Review & Herald Publishing Association which will be published in January. In April 1989 she completed her master's in English professional writing at the University of Tennessee in Chattanooga.

Δ Returning this fall to the Nursing Department is **Judy Broder-son Winters**, wife of Dr. David Winters. She is teaching obstetrics this semester on a full-time basis.

Δ Four papers co-authored by Southern College students were presented in May and June. At the May meeting of the American Physical Society's Division of Atomic, Molecular, and Optical Physics, two poster papers co-authored by **Brian Hartman**, **Lizzie Harper**, and **Sharon Kendall** were presented by their mentor, **Dr. Ray Hefferlin**, senior professor at Southern. That meeting was in Monterey, Calif.



Student Leaders Activate Their Plans

New ideas come with the territory. Student Association officers at Southern College this year represent eight different home states. Pictured at the front are Woody White, president; and Alex Bryan, executive vice president. Their associates are, from left, second row: Tim Burrill, Southern Accent (campus newspaper) co-editor; Gina McIntyre, Southern Memories (annual) editor; Janene Burdick, executive secretary; DeAnn Champion, Joker (directory) editor; Annette Crosier, social vice president; Deanna Moore, public relations; back row: Alan Huff, computer specialist; Erich Stevens, Accent co-editor; Ervin Brown, Strawberry Festival director; Mark Addison, parliamentarian; and Darin Stewart, finance director. Student senators were elected September 24.

In June, at the Molecular Spectroscopy Symposium at Ohio State University two oral papers were presented. **Robert Marsa**, a co-author, presented one of the papers. Co-authors **Rick Cavanaugh** and **Katie Linderman** also were at the meeting. Additional co-authors for these papers were **Brian Hartman** and **Lizzie Harper**.

Δ This year marked service milestones for a dozen college employees. Gold watches were awarded in appreciation of 25 years of service at Southern to **Ann Clark**, associate professor of English; **Mary Elam**, associate vice president for academic administration; and **Bob Torkelson**, a College Press employee. Pen and pencil sets for 10 years of service were given to **Bonnie Ashmore**, **Susan Brown**, **Frank Di Memmo**, **Carmen Jaecks**, **Steve Jaecks**, **Merritt MacLafferty**, **Ron Qualley**, **Evonne Richards**, and **Jayne Wyche**, as well as **Nancy**

Shaffer on the Orlando Center campus.

Δ At the summer meeting of the Adventist Theological Society, held in Indianapolis, two Southern College professors of religion were elected as officers. **Dr. Norman Gulley** is the executive secretary and **Dr. Doug Bennett** is the treasurer. The organization was launched at Southern two years ago and now has over 500 members. Alumnus **Gerhard Hasel**, professor of Old Testament at Andrews University, is the new ATS president.

Δ A check for \$500 was presented to the Jerry Lewis Muscular Dystrophy Association telethon by **Dean Kinsey** representing the faculty and staff, who raised the money at their Jingle Bell Jog. The event was a part of Southern's employee Wellness/Fitness program. A second Jingle Bell Jog is scheduled for December 16.

THOSE WHO WALKED THESE HALLS

Compiled by Ingrid Skantz

1920s

Elizabeth Cowdrick, '23, spent 37 years in denominational service as both English teacher and dean of girls. During that time she received a master's degree from Northwestern University and a second master's in library science from Peabody College in Nashville. After retiring she helped set up an elementary library and worked as the librarian at Madison Campus Elementary. Elizabeth lives in Madison, Tenn.

Herman Slate, '25, passed away January 7, 1990, in Alexandria, Va. He spent 32 years in general surgery private practice and 14 years as medical officer at St. Elizabeth's Hospital in Washington. Survivors include his wife, Esther, and two daughters, Grace and Glenda.



Don Steinman

Don Steinman, '26, served as district pastor in both the Potomac and Ohio Conferences. After retirement he served as private duty nurse, as supervisor for the Department of Mental Health of Illinois, and served at John J. Madden Mental Health Center. He has traveled to Scotland, England, Hong Kong, and China. Don enjoys bee keeping. He gives lectures on the subject in Sabbath Schools and clubs and sells 300 lbs. every five weeks to health agencies and for Sabbath School investment. He would appreciate hearing from friends at his address: 2905 E. 6th Street, Space 13, National City, CA 92050.

1930s

Dorothy (Sheddan) Culbert, attended '31 and '32, lives in Mammoth Spring, Ark., and is a member of the Spring River SDA Church in Hardy.

Walter Ost, '32, passed away on April 23, 1990. He served as dean of men at two colleges.

He later served ten years as doctor, pastor, and counsellor in Higgins, N.C. before going to Avon Park, Fla., as medical director of the Avon Park Hospital. Walter served as the first lay field secretary for the General Conference from 1975 to 1980.

Henry Reese, '37, has been engineering consultant to the Commonwealth of Pennsylvania, architects, and public utilities. After age 55 he served as consultant to doctors and laboratories on clinical lab work. Henry is semi-retired and living in Coudersport, Pa.

1940s

Jimmie Lou (Westerfield) Brackett, '49, resides in Jackson, Miss. Her husband, **Thomas**, '51, has passed away.

Ellen Corbett Zervos Brown, attended '48 and '49, works full time as administrator of an adult day care center in Orlando. She says she has 50 clients the oldest being age 102. Ellen and her husband, **Robert**, live in Apopka, Fla.

Elsie (Landon) Buck, '41, has been a member of the board of trustees for Andrews University for the past 13 years and is retired. In April, she and her husband, **Edwin**, returned from the annual conference of the Association of Governing Boards held in San Diego. Also, Elsie was asked to be in charge of the pianists at the General Conference session in Indianapolis. The Bucks reside in Berrien Springs, Mich.

Margarita Merriman, '46, retired in January but still teaches three classes and coordinates the Honors Core Program for AUC. She has composed many works including two symphonies and an Oratorio, *The Millennium*. For two years she has served as head elder at the college church and was one of the first three women elders in the church during the 1970's. She and her husband, **James**, attended, reside in S. Lancaster, Mass.

Jack Parnell, '42, and his wife, **Ruth**, have semi-retired to Collegedale from Houston, Tex. Jack is an aviation accident investigator and an FAA pilot examiner. **Ruth** was a nursing administrator. Both would like to hear from friends at Box 2004, Collegedale, TN 37315 or 615-396-2000.

Robert Roach, '48, completed a three year grant with the state of California and Riverside County Department of Health on the wise use of medications, particularly with senior citizens. He also conducts seminars on addiction prevention, temperament theory, and the Bible in the light of the cross at many churches. His wife, **Evie**, is working on a B.S. in social work. They live in Loma Linda, Calif.

Dixie (Reeder) Wilcox, '48, passed away in July of this year at her home in Floyds Knobs, Ind. She was executive vice president and one of the founders of Louisville Tile Distributors.

Survivors include her husband, **A. J.**, and three children.

1950s

Harold Johnson, '58, is chaplain for Memorial Hospital. He is also chaplain for the London Composit Squadron Civil Air Patrol which is the auxiliary of the U.S. Air Force, appointed with the rank of captain. Harold and his wife, **Harriet**, attended, reside in Manchester, Ky.

Paul Kilgore, '57, has been the director of education for the Atlantic Union Conference since 1979. His wife, **Joan**, works for the Southern New England Conference in the treasury department. The Kilgores live in South Lancaster, Mass.

Caryl (Maddox) Morey, '59, and her husband, **Keith**, spend part of their time at their home in Dahlonga, Ga., and part in Louisville, Ky. The summer was spent in Louisville where Caryl worked in the emergency room of the Humana Audubon Hospital and Keith spent time on the road as an actively retired minister "sharing the heart of the 1888 message."

Clifford Paden, Sr., attended '59 and '60, has worked for Christian Record Services for fourteen years and since April 1988 has been the southeast area director. He and his wife, **Elizabeth**, live in Covington, Ga. They have seven children and five grandchildren.

Delphyne (Ballard) Reece, '57, spent 21 years as a medical secretary but now owns and operates Sand Mountain Candy Co. with her son and grandson manufacturing sugar and sugar-free lollipops and peanut brittle. Delphyne lives in Bryant, Ala.

1960s

Clark Acker, '65, has been a pastor evangelist for 22 years serving in Pennsylvania the past 12 years. The Ackers have three children and live in Danville, Pa. They say, "Write us, call us, or better yet, come see us."

John Baker, '61, is retiring as professor of education at AUC, and his wife, **Murdnal (Adler)**, '68, is retiring as assistant to the vice president for finance. They will return to Collegedale where Murdnal looks forward to spending time with their two daughters, **Karen** and **Sharon**. John will spend time consulting, contract teaching, and hopes to write and illustrate a children's book.

Lois Case, '63, directs the Paulin Center for the Creative Arts, teaches piano, harpsichord and piano pedagogy at PUC, and is a member of the Napa Valley Symphony Board. Her husband, **Del**, is professor of music at PUC. They reside in Angwin, Calif., and have two daughters, **Tonya** and **Lori**.

THOSE WHO WALKED THESE HALLS

Doris Davis, faculty '64 to '76, and her husband, **Cecil**, attended and faculty, live at Chisholm Trail Estates, a Texas Conference retirement home in Keene. They are near their two daughters and five grandchildren.

Kathryn Dillon, '65, is associate chairman of the department of nursing on the Glendale campus of Pacific Union College. She also has a private practice in contemporary psychoanalytic psychotherapy in Los Angeles. Kathryn lives in Glendale, Calif., and says she tolerates the earthquakes, smog, and med flies but loves the beaches and mountains.



Kathryn Dillon

Roger Gardner, '66, is the federal disability hearing officer and was recently selected for a management development assignment for the Atlanta regional office of the social security administration. He and his wife, **Kathy**, live in Lilburn, Ga., and have a son, age 12. Roger is a private pilot and member of the FAA flying club.

Lloyd Johnston, '64, graduated from the school of dentistry at the University of North Carolina-Chapel Hill in 1976 and practices in Charlotte, N.C. He and his wife, **Dorothy**, have three children: **Michelle**, attended, **Debbie**, attended, and **Michael**, current student.

Gerald Kovalski, '63, and his wife, **Sandra (Collier)**, '62, reside in Apopka, Fla. Gerald is the vice president of educational administration in the Florida Conference. Sandra heads the business education department at Forest Lake Academy. Oldest son, **Gerald, Jr.**, '87, is editor of *WorldBeat*, an international cellular newsletter headquartered in San Francisco. Daughter, **Karen (Roach)**, '87, is nursing in Chattanooga, and youngest son, **Jeffrey**, is a current student.

Marvin Lowman, '66, is executive secretary and church ministries director for the Dakota Conference. His wife, **Donette**, is a full time dental assistant. They reside in Pierre, S.D., and have two children, **Tamara**, 19, and **Brian**, 18.

Robert Potts, '66, was elected president of the University of North Alabama by the UNA board of trustees in a special meeting attended by Governor **Guy Hunt** in August. Robert has been serving as interim president of UNA since January 1.

Edwin Shafer, '68, is vice president and executive director of the Community Health Care Foundation responsible for the development and implementation of efforts to obtain donations for Community Hospital and related organizations in Anderson, Ind. Previously he was director of development and public relations at Bryan Memorial Hospital in Lincoln, Nebr. He and his wife, **Judy (Silverstein)**, attended, have three children.

Don Shelton, '69, has been re-elected as president of the Dakota Conference. He and his wife, **Anita (Coulter)**, '69, reside in Pierre, S.D.

Joe Strock, Sr., '67, is working with the U.S. Census Bureau. He and his wife, **Charlotte**, live in Knoxville, Tenn.

Irene (Capps) Van Cleave, '67, works as a registered nurse and her husband, **Gwyn**, '72, is a registered respiratory therapist. They live in Shelby, N.C.

Bailey Winsted, '64, and his wife, **Beverly (Shacklett)**, '65, reside in Kernersville, N.C. Bailey directs the Heritage Greens Retirement Center and Beverly is a physician assistant with Bowman Gray School of Medicine in Gerontology.

1970s

Mark Anderson, '78, is principal at Bowman Hills SDA School. His wife, **Nancy (Ostrem)**, '79, is an operating room RN. They live in Cleveland, Tenn.

Linda (Stonebrook) Bennett, '71, and her husband, **Tom**, a radiologist, were killed in a plane crash in February of this year. Their two children, **Nathan**, 13, and **Lora**, 10, were staying in Sacramento. A memorial service was held at Campus Hill Church in Loma Linda.

Sharla (Closser) Bogar, '74, is a homemaker in addition to making and selling crafts. Her husband, **Don**, attended '71 to '74, is the pharmacy director at Walker Memorial Hospital. The Bogars reside in Avon Park, Fla., and have two sons, **Andrew**, 7, and **James**, 5.

Deanna Brown, '78, obtained her M.A. degree in elementary education from LLU. She works part time as a physical therapist and is substitute teaching. Deanna says she keeps busy doing what she loves most—ringing handbells and playing her horn.

Marjorie (Syfert) Campbell, '71, works for the General Conference Auditing Service in Loma Linda, Calif. She and her husband, **Melvin**,

attended, are living in Riverside, Calif., after spending 20 years in Collegedale. **Melvin** transferred to the La Sierra Campus in July of 1988 to teach for the school of education.

Jack Carey, '70, completed his M.Ed. at George Mason University in 1987. He is principal of a junior academy in Santa Cruz and experienced the earthquake which occurred in October of 1989. His wife, **Carol**, attended '63, finished a B.S. in business administration in 1988 from CUC and is controller of Rose Grower in Watsonville, Calif. They have two children, **Mike** and **Chris**, attended '88.

Glenn Coon, '79, is a Navy petty officer first class. He joined the Navy in October 1980 and is on duty with the Submarine Precommissioning Unit USS Jefferson City based at Newport News, Va.

Adrian Cooper, '79, business manager for the Adventist University of Central Africa in Rwanda, died in an auto accident on July 26. His wife, **Anne (Boniface)**, attended, and youngest son, **Andrew**, were injured. The family was returning to Rwanda from vacation in Tanzania.

Cindy (Sewell) Day, '78, is a full time home maker and part time nurse at Tennessee Christian Medical Center. Her husband, **Thomas**, '82, works at TCMC in critical care. They have two daughters, **Rachel**, 17, and **Rose Mary**, 4, and reside in Cross Plains, Tenn.

Gil Floyd, '70, pastors the Savannah SDA Church. He is chaplain of the First Brigade in the Tennessee Defense Force and ranked lieutenant colonel. His wife, **Vera Mae**, attended, is an RN working in the intensive care unit of Hardin City Hospital. They live in Adamsville, Tenn., and have two children, **Kim** and **Sandy**.

Beth (Kunsman) Garibaldi, '78, has been teaching elementary school in Huntsville, Ala., for nine years until her move this past summer to California. Her husband, **Eugene**, attended, is working in the family business in California. They have two children, **Lisa**, 10, and **Dustin**, 8.

Danette Glenn, '77, is nurse manager at Rose Medical Center in Denver, Colo., president of the Colorado Chapter of the Association of Rehabilitation Nurses, Pathfinder leader, and Sabbath School teacher. She lives in Arvada, Colo., and says she likes "to ski in the Colorado Rockies and play softball and volleyball."

Austin Goodwin, '74, pastors the Galax and Stuart churches in Virginia. His wife, **Joanne (Ramsey)**, '72, has done part time nursing but presently spends time at home with their four children: **Michelle**, 11, **Heather**, 9, **Jennifer**, 7, and **Kevin**, 1. The family resides in Galax, Va.

Juanita (Daniels) Griffiths, '70, and her husband, **Rick**, live in Cheney, Wash. Rick is a spray pilot and Juanita says she is enjoying nursing. They have two daughters, **Melissa**, 14, and **Maegen**, 12.

THOSE WHO WALKED THESE HALLS

Lars Gustavsson, '79, is working toward his master's degree in business at Andrews University. After spending seven years in Rwanda, Africa, Lars and his wife, **Janiel (Sorensen)**, '82, live in Berrien Springs, Mich. They have three children: Bjorn, 6, Yanika, 3, and Bengt, born January 4, 1990.

William Hammond, '75 and '82, is a nurse anesthetist. His wife, **Kathryn (Hayes)**, '78, is home maker for their two daughters, Katie, 3, and Emily, 7 months. They live in Chattanooga.

Morgan Hellgren, '75, and his wife, **Nancy (Sorensen)**, faculty '72 to '77, are at Wisconsin Academy. Their daughter, Larisa, was named winner of the 1989 NAD Adventist Heritage Poster Search receiving, \$100 for drawing a picture of the William Miller home.

Douglas Hilliard, '71 and '85, announced in a constituency meeting he would be leaving the position he held as conference treasurer in the Dakota Conference since 1988 to accept a call to the Kentucky-Tennessee Conference. Douglas was honored by officers of the Mid-America Union for 14 years of service in Dakota conferences.

John Hood, '78, pastors the Paducah SDA Church for the Kentucky-Tennessee Conference after completing coursework for his Ph.D. in religion from Andrews University. He and his wife, **Ruth**, live in Ledbetter, Ky., and have two sons, Johnny, 6, and Jimmy, 5.

Cheryl Jetter, '71, teaches at Andrews University as assistant professor in the history of art and architecture. She lives in Berrien Springs, Mich., and is working on her dissertation for a degree in comparative arts from Ohio University.

Ronald Johnson, '79, continues to work on his Ph.D. in math at the University of Texas-Arlington. His wife, **Frances (Farrion)**, '79, finished her B.S.N. in 1987 and is relief charge nurse and nurse clinician in neonatal intensive care at Harris Hospital in Ft. Worth, Texas. They reside in Arlington with their son, Danny.

Kirk King, '79, is the associate youth pastor of the Pleasant Hill Church in the N. California Conference and "loving his work with the youth." His wife, **Kathleen (Mixell)**, '74, is a home health nurse with Mt. Diablo Hospital. Kirk and Kathleen recently went with a group of youth on a mission trip to Mexico. They live in Pittsburg, Calif.

Victor Kostenko, '72, is the executive director of the American Guild of English Handbell Ringers, a professional organization for handbell choirs. His wife, **Chana (Kagels)**, '71, teaches at Spring Valley Academy. They live in Spring Valley, Ohio, with their two sons, Nikolas, 10, and Zachary, 8.

Michael Lowe, '76, is owner and president of Advanced Medical Equipment and Supplies,

Inc. His wife, **Carolyn (Mullins)**, '76, is director of Rainbow's End, a day care and nursery business owned by the Port Charlotte SDA Church. The Lowes reside in Punta Gorda, Fla., and have two children, Shawn, 8, and Evan, 2.

Dan Manzano, '71, lives in Hendersonville, Tenn. He is an RN working in the critical care unit at Nashville Memorial Hospital.

Linda (Hall) Matthews, '76, and her husband, **Larry**, live in Clackamas, Oreg., near Portland. She says the area provides for their two favorite activities—snow skiing and camping. Linda works on-call for the nursery at Portland Adventist Medical Center. Linda and Larry have two children, Ryan, 6, and Tara, 4.

Paul May, '72, and his wife, **Sandra**, reside in Salinas, Calif. Paul continues his research in numerical ocean modeling in Monterey, Calif. He says they survived the Loma Prieta 7.1 earthquake with no damage though the epicenter was 15 miles from their home.

Nancy (Schwerin) McBride, '70, is a computer programmer for mainframe applications at Bath Iron Works, a government ship building contractor in Brunswick, Maine. Her husband, **Norman**, is president of Parkview Memorial Hospital. Son, **Lance**, is a sophomore honors student at Pine Tree Academy.

Cynthia McCants, '76, decided on a career change after practicing social work for several years in North Carolina. She is a special agent with the F.B.I. transferred to New Haven, Conn., in 1988 after finishing training at Quantico, Va.

Lucia (Longway) Meeks, '78, is a database analyst at Ole Miss computer center and is the current project director for telephone registration. Her husband, **Robert**, attended '75 to '76, is a second year law student at Ole Miss. They live in Oxford, Miss., with their newborn daughter, **Jessica Nicole**, born March 29, 1990.

Patsy (Rosen) Middaugh, is a quilter giving classes, lectures, and seminars in Dowagiac, Mich., where she resides with her husband, **Allen**, and son, **Charles**.

Harvey Oetman, '73, and his wife, **Bonnie (Campbell)**, '72, live in Lansing, Mich., with their daughter, **Reyna**. Harvey is a manager for Great Lakes Hybrids. Bonnie graduated from Michigan State University with a B.S.N. degree in June of 1989 and works as an ostomy/oncology nurse clinician for a 500 bed hospital.

Carol (Neall) Reynolds, '77, and her husband, **Byron**, are helping Bangkok Adventist Hospital start a Mission Health Promotion Center. Byron is a physical therapist and Carol is full time mother for their sons: **Jonathan**, **Michael**, and **Daniel**. Carol says, "We'd appreciate your prayers for the gospel to go forward in this spiritually needy country." Her address is: Bangkok Adventist Hospital, G.P.O. Box 613, Bangkok, Thailand.

Terry Stone, '78, is employed by Universal Health Services as controller at Turning Point Care Center in Moultrie, Ga. His wife, **Brenda**, is a pharmacist technician. Terry adopted Brenda's children: **Michael**, **Bobby**, and **Cherri**.

John Swafford, '78, is director of junior youth church ministries for the Georgia-Cumberland Conference. He recently led a group of Pathfinders on a two-week trip to New York where they assisted in repairs on the William Miller home. John and his wife, **Evelyn (Hedrick)**, '67, live in Calhoun, Ga.

Peter de Vries, '79, is men's hydrotherapy supervisor and his wife, **Frances**, '80, is assistant coordinator of the Newstart Homestyle Program at Weimar Institute in California.

Crystal (Lake) Watt, attended '75 and '76, and her husband, **Tim**, attended, live in White House, Tenn. After 11 years in food service, Tim is training officer for the White House City Fire Department. Crystal works for three doctors in Madison. They have a daughter, **Desiree**.

Ruth (Earle) Wiehn, '76, works part time in home health and oncology. Her husband, **Roger**, '76, teaches at Knoxville Adventist School. They have two children, **Brian**, 10, and **Heather**, 7, and live in Knoxville, Tenn.

Cindy (Mathiesen) Williams, '74, has been at East Pasco Medical Center for five years as an RN in the I.C.U. and two years as education coordinator. Her husband, **Haskell**, '74, pastors the Lakeland Church. They live in Lakeland, Fla., with their children: **April**, **Kirsten**, and **Nathan**.

Arlene (Webb) Zerbee, '76, is director of medical records, telecommunications, and registration at the SDA hospital in Manchester, Ky. Her husband, **Richard**, is administrative director of laboratories in Manchester. Arlene and Richard say they are "comfortably settled" on 20 acres of country in Annville, Ky.



Richard and Arlene Zerbee

THOSE WHO WALKED THESE HALLS

1980s

The Southern Union's 1990 ministerial ordinations included: **Terry Wolfe**, '86; **Don Keele**, '81; **Roger Burke**, '83; **Jud Lake**, '82; **Dan Adels**, '86; **Gregory Ellis**, '84; and **Doug Martin**, '75.

The following alumni graduated this year from Loma Linda University: Doctor of Medicine—**Steve Carlson**, '86; **Joe Chaffin**, attended; **George Figueroa**, '86; **Darla Jarrett**, '86; **Paul Kennedy**, '86; **Kristin Kuhlman**, '86; **Jon Miller**, '85; **Robert Rodgers**, '86; **Robert Vaughan**, '86; **Jonathan Wurl**, '86; Master of Science—**Carolyn Calhoun**, '82; Master of Public Health—**Wayne Dysinger**, '82; **Richard Freeman**, '76, **Linda Schneider**, '70.

Pamela (Streidl) Anders, '84, married her husband, Jay, on June 25, 1989, at the Collegedale Church. Pamela teaches business and education at Collegedale Academy. In 1985 she received her M.A.T. degree from Andrews University and passed the national exam to become a certified professional secretary in 1986. Pamela and Jay live in Collegedale.

Howard Bankes, '87, works as an HVAC mechanic in Martinsburg, W.V. His wife, **Beth (Stitely)**, '85, teaches in a one-room school in the Bankes hometown of Berkeley Springs, W.V. In 1989 she had the opportunity to attend space camp in Huntsville, Ala.

Lynnette (Jones) Bilodeau, '85, is a medical secretary at the University of Massachusetts Medical Center. Her husband, Jim, is an area supervisor for a McDonald's franchise. Lynnette and Jim have two children, Ashley and James, and live in Gardner, Mass.

Kelli (Rausch) Black, attended '80 to '82, graduated from LLU in 1984 with a B.A. in religion. She and her husband, Robert, have a son, Robert Alan. They live near Detroit in Farmington Hills, Mich., where Robert is a zone manager at Ford Lincoln-Mercury.

Richard Bonjour, '86, and his wife, **Kathleen (Summerton)**, '85, have a son, Jonathan, age 3, and are expecting their second child in December. Kathleen graduates with her B.S. in elementary education this fall. Richard works in the intensive care unit at Park Ridge Hospital in Fletcher, N.C. They live in Hendersonville.

Ken Bradley, '83, was appointed assistant director of human resources for Florida Hospital in Orlando, Fla. His responsibilities include compensation and management support. Ken resides in Altamonte Springs, Fla.

Mark Bresee, '81, pastors the First SDA Church in Chattanooga. He and his wife, **Sharon (Gulley)**, '81, have lived in Chattanooga for the past three years. Sharon is a full time homemaker. They have a son, Andrew, age 2, and are expecting another child in December.

Harry Brown III, '85, married Teresa (Wells) on March 5, 1988. Harry does software consulting and systems analysis and design while searching for a personal business opportunity. He and Teresa reside in Columbia, S.C.

Cindy (Harris) Burgal, '82 and '84, married her husband, Steve, in September of 1989. She works in the pediatric intensive care unit at UCLA Medical Center and part time in the emergency room at Children's Hospital in Los Angeles. Cindy and Steve reside in Marina Del Rey, Calif.

Roger Burke, '82, graduated from SDA Theological Seminary in 1986. He pastored in Ft. Walton Beach, Fla. from 1987 to 1990 and is currently pastoring in Meridian, Miss. He and his wife, Debbie, reside in Meridian.

Dora Chen, '83, is a nurse at Duke University. She is engaged to marry **Rick Trivette**, attended, on September 2, 1990. Dora lives in Cary, N.C.

Gregory Cain, '86, is the associate pastor at the Markham Woods SDA Church in Longwood, Fla. He and his wife, Kathy, live in Lake Mary, Fla.

Tammie Crabtree, '82, is working in nursing and lives in Collegedale. She says she "would like to say hello to my classmates in the nursing class of 1982."

Deborah Crane, '89, expects to graduate in June 1991 from Andrews University with her B.S. degree in nursing. She lives in Berrien Springs, Mich.

Carlos Cruz, '86, works as a critical care nurse at Florida Hospital South. He lives in Altamonte Springs, Fla.

Greg Culpepper, '84, is a lieutenant in the U.S. Army stationed at Ft. Knox, Ky. He is scheduled for discharge in May of 1991 at which time he plans to attend graduate school.



Ken Bradley

Tania DaCosta, '87, works at a major hospital in Miami, Fla., as a physical therapist's assistant. She obtained her degree in physical therapy in 1989 and plans on resuming studies toward her master's degree.

Michelle (Cole) Dudley, '84 and '85, is a full time nurse consultant for Travelers Insurance Co. Her husband, Steven, holds a management position with United Telephone of Florida. They live in Cape Coral, Fla., and have a newborn daughter, Kristyn Lanet, born February 27.

Gregory Ellis, '84, and his wife, **Jeanine (Hahling)**, '83, reside in McMinnville, Tenn. Gregory was ordained to the ministry in May 1990 and is pastor of the McMinnville and Spencer SDA Churches. Jeanine is an RN at River Park Hospital. They have a baby boy, Tyler Manning, born July 12, 1989.

Steven FitzGerald, '83, has ended his active duty obligation with the U.S. Navy and has accepted a position as internal auditor with the Dependable Insurance Group in Jacksonville, Fla. He married Robin (Hill) in November 1989. Robin is the assistant legal director at the Mayo Clinic in Jacksonville.

Dale Ford, '80, has a partnership with his father on a family owned dairy farm. His wife, **Jennifer (Criss)**, '79, is a homemaker. Dale and Jennifer have two children, Jessica, 11, and Heather, 9. The Fords live in Hoosick Falls, N.Y.

Heidi (Dyke) Foulk, '84, works as an insurance processing associate in the renewal department of Allstate's indemnity company. Her husband, Steve, is an engineering trainee for the Tampa division of General Dynamics. They live in an apartment in Largo, Fla., "with two green parakeets, Polly and Pepper."

Bradley Howes, '82, works for a graphic arts company. He married Michelle (Keech) on March 11, 1990. She is an RN. They reside in Leominster, Mass.

Jeff Jewett, '84, and his wife, **Kim (Venis)**, '85, recently built a house in Carmel, Ind. Jeff has his own business. He has developed a software package originally meant for churches but now has other businesses using an accounting section of the package. Kim works part time in newborn intensive care at St. Vincent Hospital in Indianapolis and the rest of her time is spent caring for Daniel Jeffrey, born in April 1989.

Ed Keplinger, '87, and his wife, **Tamara (Koehn)**, '88, moved at the end of July from Piscataway, N.J., to South Bend, Ind., where Ed will be teaching at the junior academy. They have a new son, Jonathan Ryan, born April 6.

Jeffrey King, '83, has been promoted to assistant professor of anesthesia at the Bowman Gray School of Medicine of Wake Forest University. He was previously chief resident and a fellow in cardiothoracic anesthesia at the

THOSE WHO WALKED THESE HALLS

Cleveland Clinic Foundation in Ohio. Jeffrey and his wife, Alicia, live in Lewisville, N.C.

Bonnie (Kellogg) Lake, '81 and '83, has spent the last two years home with her children, Shelly, 5, and Joshua, 2. Her husband, **Judson**, '82, pastors churches in Anniston and Gadsden, Ala. The family resides in Ohatchee, Ala.

John Lazor, '80, is dean of boys, campus chaplain, and Bible teacher at Pine Forest Academy in Chunky, Miss.

David Leader, '82, is in his first year of medical school. He and his wife, **Shari (Sharpe)**, '82 and '83, have two sons, Jeffrey, 3, and Jeremy, 1. Shari is a full-time mother and a part-time nurse. Prior to moving to their home in La Plata, Mo., to attend medical school, David was the nursing supervisor at Downtown General Hospital in Chattanooga.

Vivian Lopez, '87, completed her B.S. degree in health information administration at LLU in June 1990. She lives in Loma Linda, Calif.

Michael McClung, '85, teaches Bible at Fletcher Academy. He married his wife, **Katrina**, in May 1989. They live in Fletcher, N.C.

Carolyn Moore, '89, works as an RN on a cardiac telemetry floor. She attends AUC part time to obtain her B.S. in nursing. Carolyn lives in S. Lancaster, Mass. and is engaged to marry **Randall Gifford** in the summer of 1991.

Lori Norwood, '85, is in the construction business and lives in Martinez, Calif. She says she is "not married and lovin' it!"

Lora Polivka, '89, lives in Hendersonville, N.C., where she works as a transcriptionist and medical secretary at Arden Medical Center. She is engaged to marry **Thomas Clevinger** in the spring of 1991.

Fred Rimer, '80, was ordained to the ministry in 1984. Ministerial director for the Gulf States Conference, Fred and his wife, **Joyce**, live in Montgomery, Ala.

Diane Ringer, '87 and '89, resides in Hendersonville, N.C. working in the ICU as well as extra shifts in the adolescent psychology and eating disorder unit and in cardiac rehabilitation at Park Ridge Hospital in Fletcher. Diane hopes to receive a three month nursing contract for work in Hawaii. This summer she spent time in Denmark, Norway, and Sweden.

Margaret (Rilea) Ringer, '82, died June 9, 1990, in Chattanooga. She was a secretary in SC's education and nursing departments for 12 years. Her husband, **Bruce Ringer**, is retired from the security department. They came to Collegedale in 1943.

Jack Roberts, Jr., '84, is in charge of accounting at Everett Beasley Wholesale, Inc. He resides near Nashville in Madison, Tenn.

Julio Rodriguez, '83, and his wife, **Maria**, attended, live in Altamonte Springs, Fla. After almost five years of working for the Florida Conference, Julio has enrolled in the nursing program at SC's Orlando campus. Julio and Maria have three children: **Eliz**, **Iris**, and **Eliezer**.

Odil Rojas, '80, was a medical technician in the chemistry department at Kettering Medical Center in Dayton, Ohio. He was planning to marry in August and move to Columbus.

Roy dos Santos, '89, spent the last year as a chemist with Analytical Industrial Research Laboratory and is a manager with A. L. Williams. He lives in Collegedale and plans to return to SC for a business degree.

Kent Sharpe, '88, and his wife, **Lisa (Petruzza)**, '88, both work for the Ohio Conference in Mt. Vernon. They are expecting their first baby in December.

Kim Shearer, '85, works at Florida Hospital as human resources information systems coordinator. She lives in Apopka, Fla.

Iris (Mayden) Shull, '81, and her husband, **David**, are employed by the Review and Herald Publishing Association in Hagerstown, Md. They have a son, **Matthew Gregory**, age 1.

Kristin (Kuhlman) Slattery, '86, and her husband, **Scott**, graduated with doctor of medicine degrees from LLU on May 27 and were married on May 28. Kristin won the Lemmon Award and is a member of Alpha Omega Alpha and the American Medical Women's Association. Scott received the David B. Hinshaw Award and is also a member of Alpha Omega Alpha. They live in Loma Linda.

Eddie Soler, '86, has been promoted to assistant controller in the accounting department at Florida Hospital. His wife, **Milca**, attended, works at Florida Hospital as an RN. They live in Orlando with their baby daughter, **Jacqueline Tamara**, age 1 1/2.

Janice (Pierson) Swanson, '81, and her husband, **Del**, attended, reside in Moraine, Ohio, near Kettering Hospital where they are both RNs. They have two sons, age 7 and age 6 months. Janice "would like to hear from you."

Ted Theus, '87, graduated in May 1990 from the University of Georgia School of Law. He is working as an associate for the firm of Layfield and Rothschild. His wife, **Brenda (Gabbert)**, '87, is a CPA working in the internal audit department of American Family Life Assurance Co. The Theuses live in Columbus, Ga.

Gail (Christianson) Toebe, '80, has a CPA tax practice which she manages from her home. She and her husband, **Rich**, live in Renton, Wash., with their sons, **Brandon**, and **Marty**.

Shirley (Hopkins) Tramble, '84, lives in Tampa, Fla., where she has been employed by

the State of Florida Department of Correction as a house arrest officer for the past five years. Her husband, **Michael**, is a supervisor with Pepsi Co. They have one daughter, **Nikita**, age 3.

Ethyn Vassar, '89, teaches conversational English and Bible to Mexicans at the Biesda Language Program in Brownsville, Tex.

Robert Vaughan, '86, graduated from LLU School of Medicine in May of 1990. He is in residency training at Letterman Army Hospital in San Francisco as a captain in the medical corps. His wife, **Tamara (Ellis)**, '86, teaches grades 1 to 3 at Bayside SDA Christian School. Bob and Tamara were married August 2, 1987, and live in San Francisco, Calif.

Deana (Eicher) Watson, '82, and her husband, **Terry**, live in Ooltewah, Tenn. Deana is employed in the newborn nursery at T.C. Thompson Children's Hospital. Terry is a carpenter. They have a daughter, **Jessika**, age 3.

George Webster, '82, is a cook and supervisor at San Pasqual Academy in Escondido, Calif. He is returning to school for his B.S. in communications. He and his wife, **Lynnae**, live in Escondido and, when they wrote, they were expecting their first child in September.

Robert Wong, '83, and his wife, **Mary**, work for the Eastern Asia Administrative Committee. They thank God for the privilege to serve their native Chinese people through KSDA Guam and literature work. This year Robert completed his master's degree with honors from the Adventist International Institute of Advanced Studies in the Philippines. The Wongs live in Hong Kong.



Mary and Robert Wong

Lesla (Gober) Yip, '80 and '82, works on the surgical unit at LLU Medical Center. She married her husband, **Raymond**, on Sept. 11, 1988. Raymond finished anesthesia residency in June 1989 and is on staff at LLUMC. They live in Loma Linda.

October 26

f r i d a y

-
- 9:00 ♦ Alumni Golf Tournament
 - 10:00 ♦ Registratation begins at P.E. Center

 - 3:00 ♦ Founders' Day Program: So-Ju-Conians, Lynn Wood Hall
 - 5:00 ♦ SJC Box Supper, Hosiery Mill Reunion, Academy Gymnasium

 - 2:00 ♦ Planned Giving Society Dedication, Wright Hall, 2nd floor
 - 2:00 ♦ Journalism/Communication Open House, Brock Hall, Room 155
 - 3:00 ♦ "The Gate" Reunion, Wayne Eastep, Brock Hall, Room 155
 - 3:00 ♦ Reunion Band practice
 - 7:00 ♦ Reunion Band Concert, P.E. Center
 - 7:40 ♦ Vespers, Tom Ashlock, P.E. Center
-

October 27

s a t u r d a y

-
- 7:00 ♦ "Early Bird" Walk, Wright Hall
 - 8:40 ♦ First Service, Des Cummings, Jr.
 - 9:45 ♦ Sabbath School, Tom Baez
 - 11:10 ♦ Second Service, Jay Gallimore
 - 11:30 ♦ Potluck, Academy Gymnasium (to 1:30)
 - 2:00 ♦ Honor Class Reunions, Academy Classrooms
 - 3:15 ♦ Dedication of Robert Pierson Memorial Office, Lynn Wood Hall
 - 4:30 ♦ SC Musical Program, Church
 - 5:30 ♦ Potluck, Academy Gymnasium
 - 6:30 ♦ Vespers and Business

Saturday Night Program

- 7:45 ♦ Awards Ceremony
 - 8:00 ♦ Musical Program, Concert Band
 - 9:30 ♦ Alumni vs. College Basketball Game
 - 11:00 ♦ Southern Shuffle, College Track.
5k run, 1 mile walk.
-

October 28

s u n d a y

-
- 2 a.m. ♦ Set clocks back one hour
 - 8:00 ♦ Honor Classes Breakfast, College Cafeteria
 - 8:00 ♦ Business Alumni Breakfast, Cafeteria Banquet Room

McKEE LIBRA
Southern Missionary
College, Tennessee 57

