

Southern Adventist University

KnowledgeExchange@Southern

Alumni Newsletter

University Archives & Publications

Fall 1992

Southern Columns Fall 1992

Southern College of Seventh-day Adventists


Follow this and additional works at: https://knowledge.e.southern.edu/alumni_newsletter

Recommended Citation

Southern College of Seventh-day Adventists, "Southern Columns Fall 1992" (1992). *Alumni Newsletter*. 129.

https://knowledge.e.southern.edu/alumni_newsletter/129

This Book is brought to you for free and open access by the University Archives & Publications at KnowledgeExchange@Southern. It has been accepted for inclusion in Alumni Newsletter by an authorized administrator of KnowledgeExchange@Southern. For more information, please contact jspears@southern.edu.



Digitized by the Internet Archive
in 2009 with funding from
Lyrasis Members and Sloan Foundation

<http://www.archive.org/details/southerncolumns443coll>



SOUTHERN COLLEGE
OF SEVENTH-DAY ADVENTISTS
Collegedale, TN 37315-0370
1-800-SOUTHERN

Southern Columns

FALL 1992



Inside: President's Report
Donor Listings
... and News

With Interest

MONEY. For being a neutral piece of paper or metal, it certainly can pick up a load of significance as it moves from hand to hand. A gift of money can represent time, energy, thought, even love. This issue lists hundreds of friends of this college, people who have shared in a monetary way.

Some gave from abundance. Others gave by sacrifice. Both gifts have significance. I read the other day that the widow's mite would be worth \$4,800,000,000,000,000,000,000,000 today, had it been invested in a Bank of Jerusalem savings account at 4% interest compounded semi-annually. The math department tells me that's four sextillion, eight hundred quintillion dollars.

The President's Report, beginning after page 4, also takes a look at achievements and challenges at Southern College. The President and his team of vice presidents hope you will read their reports with interest. Though facts and figures transfer most readily to the printed page, administrators would be the first to agree that it's people and values that matter most on our campus. We may be able to count these, but we can't measure them.

db

About Homecoming

Symphony orchestra. Wedgwood Trio. Concert band. Grand Ole Opry style accordion. Soul-stirring speakers. You can hear them all.

Golf. A birding walk. A 5K run. You can do them all.

A centennial banquet. A Founders' Day luncheon. The traditional Sabbath dinner. You can taste them all.

The Centennial multi-media production. "Old" teachers. Former classmates. Close friends. The autumn-leafed campus. You can see them all.

By now alumni should have received a letter from the Alumni Office detailing many of the plans for October 29 through November 1.* The schedule is so full of good things that it spills out on both ends of the usual pattern. There won't be another Centennial banquet for 100 years, so we think this Thursday evening event will be pretty special. Tickets are just \$10. Dr. Billy Burks of Nashville will entertain with his accordion. Seminars and several showings of the Centennial multi-media production are set for Friday and Sunday.

We can't keep it a secret. A weekend highlight will be the Saturday night performance by the Southern College Symphony Orchestra of Tchaikovsky's Violin Concerto. Pat Cobos, '66, will be featured as guest violinist.

A couple of innovations this year are worth mentioning. Special recognition will be given to members of the golden class (1942 graduates) and the silver class (1967 graduates). And the golfers of any class will appreciate the Friday morning shotgun start reserved at the WindStone Golf Club for the third annual Southern College Alumni Golf Classic.

* If you attended Southern College and missed getting a letter, call the Alumni Office at 615-238-2827.

Southern Columns

VOLUME 44, NUMBER 3

DORIS STICKLE BURDICK
EDITOR

INGRID SKANTZ
EDITORIAL ASSISTANT

SOUTHERN COLLEGE

DONALD SAHLY
PRESIDENT

PLEASE ADDRESS ALUMNI
CORRESPONDENCE TO:
SOUTHERN COLLEGE
ALUMNI ASSOCIATION
P.O. Box 370
COLLEGE DALE, TN 37315
(615) 238-2827
FAX (615) 238-3001

ALUMNI ASSOCIATION OFFICERS
1992-1994

DAVID WINTERS, '71
PRESIDENT

VERLE THOMPSON, '69
PRESIDENT-ELECT

HOWARD KENNEDY, '57
PAST PRESIDENT

SOUTHERN COLUMNS
EDITORIAL BOARD

JIM ASHLOCK
RON BARROW
DORIS BURDICK
K. R. DAVIS
MARY ELAM
JAN HAVEMAN
RAY HEFFERLIN
VOLKER HENNING
WESLYNNE SAHLY
INGRID SKANTZ
PAUL SMITH
DAVID WINTERS

Southern Columns is the official magazine of Southern College of Seventh-day Adventists, produced by the Publications Office to provide news and information to former students, residents of the Southern Union, and other interested parties. Copyright 1992 by Southern College of Seventh-day Adventists.

Seventeen Students Learn in Field School

First-hand observation of the power of prayer became part of the curriculum for the Southern College field school of evangelism held June 22 to August 1 in Chattanooga.

The 17 religion majors studied in personal and public evangelism classes, taught by Ron Halvorsen, director of church growth and evangelism for the Southern Union; and Leo Van Dolson, retired but a part-time teacher at Southern and director of the field school program this summer.

"Dr. Derek Morris did much of the planning and initial arranging for the field school," indicates Dr. Van Dolson.

He describes one providence: A contract oversight at the Chattanooga Trade and Convention Center led to substitution of a 2700-seat facility for the originally scheduled hall seating less than 1000. "The Lord knew what He was doing as the first-night attendance turned out to be an unexpected 3000!" says Dr. Van Dolson.

By the end of August field school participants had experienced the joy of helping lead 150 people to baptism. Two thousand "prayer warriors" supported the Revelation Now crusade with daily prayer.

Business Students Shine On Major Field Tests

Results of the Educational Testing Service Major Field Tests taken last year by all Southern's business administration seniors place them as much as 18.1 points (accounting) and not less than 7.7 points (marketing) above the national average.

The tests measure competency in six fields of business study: accounting, economics, management, quantitative analysis, finance, and marketing. About 60 seniors were tested, with an overall score of 167.5. National average was 155.2, says Dr. Wayne VandeVere, business chair.



Student Enrollment Stays Close to 1500

The three students shown above—Sibby Serreno, Jimmy Callan, and Sharna Keehn—are among the 1494 enrolled for the 1992-93 school year. The official headcount is precisely equal to last year's head count after allowing for the fact that no first-year A.S. nursing students were accepted this year on the Orlando Center campus. (Southern will continue to offer the B.S. degree in Orlando, and both the A.S. and B.S. degrees in Collegedale.) The number of freshmen enrolled is up 33; sophomore numbers are up 17. Ten percent of the student body are over 30 years of age, and almost ten percent hold non-U.S. citizenship. Two thirds of the students live in Thatcher or Talge, the two residence halls. (Photo by Matt Niemeyer.)

Staff and Students Provide Disaster Relief After Hurricane Andrew Hits Florida

Six volunteers from among the college staff traveled to South Florida to offer on-site assistance, and over three dozen students helped unload, organize, pack, and reload relief supplies at the Adventist Community Services center ten miles from campus.

The event which motivated them is being called the costliest natural disaster in American history, the blasts of Hurricane Andrew on August 24, the first day of fall registration at Southern College.

Terry Haight, a pressman at the College Press, is also the coordinator of disaster services for the Georgia-Cumberland Conference. He and fellow College Press employees Dale Collins, Paul Seifert, and Gordon Armstrong responded to on-site needs. Collins and his wife, Betty, a McKee Library employee, are fluent in Spanish, widely spoken in the Miami area. Seifert, Armstrong, and Russell Cook, an Instructional Media employee, are all ham radio operators who were able to facilitate communication among volunteers until basic telephone service was restored.

In hardest-hit Homestead and Florida City are three Seventh-day Adventist churches. Don Johnson, a 1981 graduate of Southern College, pastors one of the three. His church was severely damaged, and he and his wife, Connie, lost their mobile home and its contents.

Among the students who helped load a semi with paper goods, baby formula, and other supplies was Phillip Fong, a junior management major from Homestead, whose parents lost their home in the storm.

SOUTHERN PEOPLE

Δ **Joyce Beck Azevedo**, a cell biologist with a newly conferred Ph.D. from the University of California, Riverside, has joined the Southern College Department of Biology. Dr. Azevedo's research has focused on animal cell mitochondrial DNA.

Δ **Orville Bignall**, '86, successfully defended his doctoral dissertation at Florida State University shortly before returning to his alma mater as assistant professor of physics. His experimental work concerned the infra-red spectroscopic determinations of vibrations in small molecules. Dr. Bignall and his wife, Seliene, have two children, Ray and Elissia.

Δ **Glenda Maxson Davidson**, '73, has come to the Nursing Department from Troy State University in Alabama. Her nursing specialty is pediatrics and her career has taken her to Zambia and Alaska, as well as Oklahoma and Kentucky. She taught at Southern in the 1974-75 school year.

Δ **Ron du Preez** joins the Department of Religion after nine years at Andrews University. There he

earned a doctorate of ministry, completed classwork for a Ph.D. in theology, and received three master's degrees. For five years, he was director of the Scholastic Study Lab for undergraduate students. He and his wife, Linda, have served the church in Korea, Japan, and Micronesia.

Δ **Mari-Carmen Gallego**, a new instructor in the Department of Modern Languages, speaks Spanish as her mother tongue. She also has a master of arts in teaching (French) from Andrews University. She attended SDA colleges in Sagunto, Spain, and Collonges, France.

Δ **Sheri Hall** has come to the Health, Physical Education, and Recreation Department as an assistant professor. She holds a master's degree from Indiana University in her home state. Miss Hall taught at Pacific Union College for six years, and at Enterprise Academy in Kansas for two years prior to that.

Δ **Donn Leatherman**, new to Southern's Department of Religion, is completing his doctorate at McGill University in Montreal. His dissertation offers "An Evaluation of Recent Theories Regarding the Metrical Structure of Classical Hebrew Poetry." Leatherman taught at Middle East College in Beirut before Lebanon's military and political situation led to his transfer to Egypt in April 1984. He and his wife, Annette, have a son, Daniel, 10.

Δ **Burt Pooley** has joined the college administration as chief accountant. A certified trust officer from the Ohio Conference, he is originally from Oregon. He and his wife, Charla, have two daughters, Kim Ashton and Brenda, a current student at Southern.

Δ **Dana Reed**, '83, joined the Nursing Department as an assistant professor teaching in the area of maternal/child nursing. A Texas native, Miss Reed earned a master of science degree at Texas Women's University. Recently she had been doing home health and labor and delivery nursing in the Chattanooga area.

Δ **Kenneth Reynolds** has come to the Industrial Technology Department with about twenty years of experience in auto body repair. He is teaching courses in the one-year Auto Body Repair and Refinishing certificate program at Southern.

Δ **MaryAnn Roberts**, a new assistant professor in the Nursing Department, teaches obstetrics. Last year she taught at Ivy Tech in South Bend, Ind. She has two teenaged daughters, Cindy and Christy.

Δ **Carl Swafford**, '74, is beginning doctoral studies in science education before his teaching assignments start in the Education and Psychology Department. He has taught at Spalding Elementary School in Collegedale since 1977, and from time to time has also taught science methods classes at the college. He was a 1990 Zapara Award recipient. In 1991 he received an Alma McKibbin Sabbatical Grant.

Δ **Bill Hayes**, assistant professor of biology, has garnered for Southern College a grant of \$30,000 from the National Science Foundation for support of the project he is directing: *RUI: Venom Expenditure by Crotaline Snakes*. The award covers a two-year period of study.

Δ **Pamela Maize Harris**, '75, has been selected by District III of CASE (Council for the Advancement and Support of Education) to receive \$1750 in the Partnership Research Award program. Her study will focus on the role of on-line databases in acquiring competitive intelligence on potential donors and will include a history of related legislation.

Δ **George Babcock**, chairman of the Education and Psychology Department, spoke on the topic of Teaching English as a Second Language at the Jordanian National Education Exhibition in July. While in Amman, he spoke at the palace with members of the royal family and the prime minister. The University of Jordan has adopted the "American" conversational English program, *Speaking Professionally*, on which Dr. Babcock worked for several years. On the same trip he presented the program to educators in Egypt.



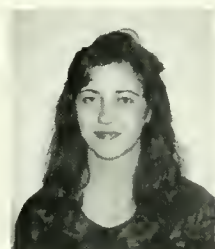
Joyce Azevedo



Orville Bignall



Ron du Preez



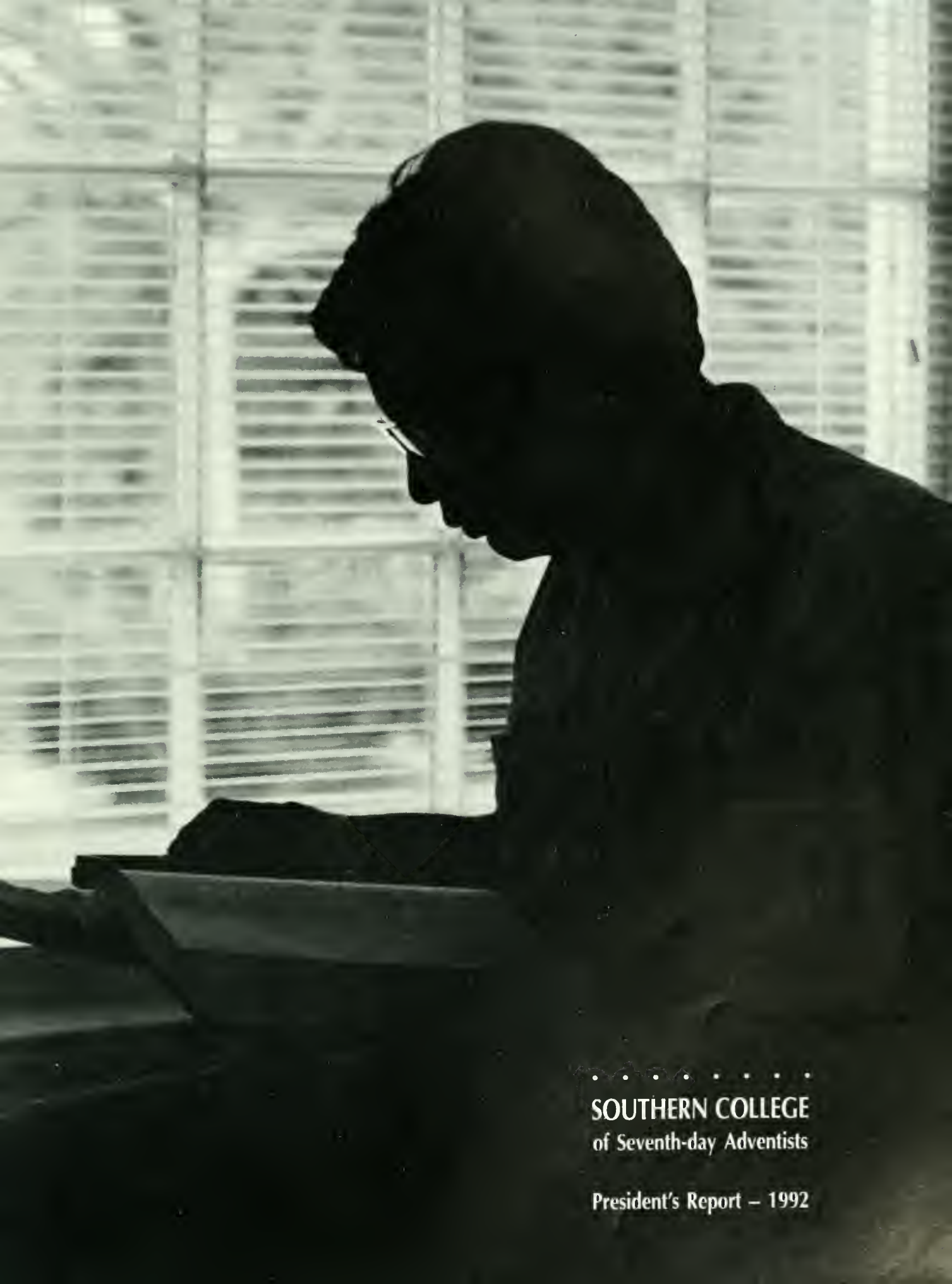
Mari-Carmen Gallego



Dana Reed



Kenneth Reynolds



.....
SOUTHERN COLLEGE
of Seventh-day Adventists

President's Report – 1992

Donald R. Sahly

President

As Southern College begins its second century, we face the future with confidence and optimism. In sound financial health the college operates on a balanced budget. With the help of a supportive constituency, the college will continue to make significant progress. Southern's progress has always been based on and measured by a tradition of excellence which has been part of the spirit of this campus for 100 years. Those who love and support this institution can continue to do so with pride.

The past year was busy and productive. We have been totally involved in our accreditation self-study and on-site visit with the Southern Association of Colleges and Schools (SACS). Also, the Education Department underwent complete reorganization in conjunction with new criteria and standards set by the Department of Education of the State of Tennessee. Although final approval of this work is not expected until 1993, we are confident, as the visiting teams found our campus in good order.

Southern continues to be a missionary school. In 1991-92 forty-seven Student Missionaries left for various parts of the world. Campus outreach ministries continue to increase. The Religion Department held its summer field school of evangelism in Chattanooga which resulted in over 150 baptisms. Our students continue their efforts in community projects with more than twenty outreach evangelistic-oriented programs. During this year, fifty college students were baptized.

Our mission to educate young people in the philosophy and lifestyle of the Seventh-day Adventist Church has not changed and will not change. On this campus are dedicated professional teachers whose lives have a profound impact on students.

When all is said and done, Southern is about teaching. It is about the responsibility each succeeding generation owes to the next. It is about passing on to our children values, culture, traditions, insights, and a store of knowledge. The best teachers leave with their students a legacy of how to live in our complex society, be of service to others, and prepare for the future, all in the context of our Christian faith.

Southern's success is the result of countless hands, hearts, and prayers. I ask you to read this report so you may know your college better. We solicit your support and prayers. May God bless us all as we work and plan together. ■



Ronald Barrow

Vice President for Admissions and College Relations

Enrollment for the past six years has been on a steady increase. Last year our enrollment was 1,532. In the 1992-93 school year the college is phasing out the nursing consortium program in Chattanooga, and the Florida Hospital College of Health Sciences is taking over our two-year nursing (A.S. degree) program in Orlando. It has been a challenge to make up these losses in one year. The 1992 graduating class was the largest in history, and replacing them added to the challenge. The Lord is good. This fall the number of freshmen increased by 33 over last year. With all these variables the 1992-93 enrollment is 1,494 with FTE (full-time equivalency) of 1,257.

The majority of the student body come from within the Southern Union. However, the college has students from every state in the country except four. The international flavor of the campus has been enhanced with students from China, Russia, Nepal, Korea, Spain, Canada, South and Central America, Pacific islands, Africa, and Europe.

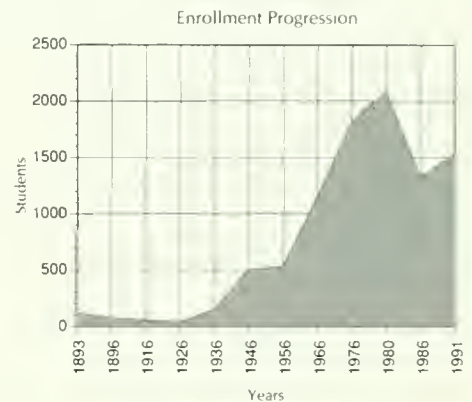
The Alumni Office had an exceptional Centennial year highlighted by a special birthday party for college students, development and distribution of Centennial memorabilia, and the Centennial picture story book. The year-long celebration will climax at this year's homecoming with a Centennial banquet and other special events.

The Southernaire quartet made over 30 trips to churches and schools throughout the Southern Union and even a trip to Canada for the college.

Award-winning publications characterized the year. *Southern Columns*, the *Science Center Centennial Campaign brochure*, the *Centennial Calendar*, and the Southern College Quinquennial Report, *Sharing the Story*, were all award winners. Writing, photography, and creative design were done in-house by a staff of two plus students.

Three issues of the college magazine reached friends of the college in the Southern Union and alumni in fifty countries. The Publications and Media Relations Office also coordinates college advertising and prepares a weekly employee newsletter.

God has blessed Southern abundantly—from a humble beginning in 1892 on the second floor of the Graysville store to the present fully accredited college sending graduates around the world to serve Him and the Church. Please continue to pray for the college, its youth, its future, and for the return of Him whom we have served and long to meet. ■



Bill Wohlers

Vice President for Student Services

A comfortable, safe, and healthy environment for learning—this is a major goal of Student Services. The residence hall deans, directors of Campus Safety, Counseling and Testing, and Health Service provided continuity, our only staffing change being the arrival of Ken Rogers as campus chaplain. Non-academic student life includes activities and events that complement the classroom.

While American universities largely ignore religion and spirituality, Southern College sees them as fundamental. Christian faith is an important factor in the lives of most students. Fifty students demonstrated their commitment of faith by baptism this past year. Other fruit of commitment showed itself in service. Forty-four Student Missionaries (students and new graduates) spent the year overseas in volunteer service, and another five, already overseas, elected to stay for an additional year. Three Task Force volunteers served here in the U.S.

Primarily a residential campus (three in four students reside in campus housing), Southern considers the residence halls a major part of the total Christian living environment. Major improvements have been undertaken in the past year. Although some rooms are still to be renovated in Talge Hall (men's residence), the primary goal of this project has been to provide additional handicap access to the building and handicap tub and shower facilities. The same has been done in Thatcher (women's residence), plus renovation of showers, repainting, recarpeting, and installation of a complete fire alarm system, new Thermopane double-hung windows, and electronic heat pumps for every room. Our facilities compare favorably with most any, in comfort and efficiency.

Personal counseling services are offered through the Counseling and Testing Office. Among its placement services is a career fair, held in cooperation with other area colleges, which introduces students to potential employers.

Health Service offers 24-hour health care for students during the regular school year. A local physician provides diagnosis and treatment on campus each morning.

A uniformed Campus Safety staff maintains an orderly campus while doing everything possible to ensure the safety of its residents. We are pleased to report that the year has been rather uneventful in terms of accident or incident. ■

The 1906 school calendar shows that classes were held on Christmas Day. Some holidays are now included when the Office of Student Services prepares the year's calendar of events.

Jack McClarty

Vice President for Development

Southern College enjoyed a banner year for development in 1991-1992. A total of \$1,929,928 in cash was realized from 2,420 gifts. A wide spectrum of givers included foundations, corporations, businesses, vendors, Committee of 100, board members, alumni, faculty, staff, parents, and friends of the college. In addition to the \$1.9 million received in cash, nearly \$3 million was pledged for the Science Center Centennial Campaign, plus another \$400,000 was written in irrevocable deferred giving instruments.

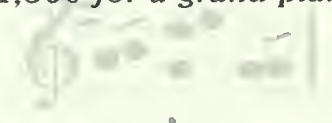
The total cost (\$156,875) ratio to raise dollars (\$1,929,928) was the lowest ever achieved at Southern—8 cents per dollar raised—an extremely low cost by fund-raising standards.

Highlighting 1991-92 were two Centennial projects. First, the Century II Scholarship Endowment increased \$900,000 to \$7.5 million in cash. We are doing our best to maximize returns, but the recession has slowed earnings. This is bad news for worthy and eligible students needing scholarships provided by endowment interest earnings. A shortfall of approximately \$150,000 from last year's income is projected, and at an average of \$1000 per student that means 150 student scholarships.

A second Centennial project is the new Science Center. Pledges and cash totalling \$3.634 million has been received toward the \$3.9 million objective. Architectural plans are being developed for this major campus addition. We are optimistic about the completion of this campaign.

A new emphasis in the development area for 1991-92 was the offering of planned giving services. Paul Smith, Jr., has joined Southern as director of planned giving, to share with alumni and friends counsel regarding deferred giving opportunities. Now it is easier to enjoy the satisfaction of giving, yet be assured provision is made for the potential hazards of life. Through such documents as wills, living trusts, and gift annuities, a plan can be custom devised to meet individual wishes. Paul is denominationally certified to assure proper development and management of the various giving plans, and he is currently working toward Certified Financial Planner credentials. He is pleased to serve without obligation or pressure of any kind. ■

During the 1929-30 school year, the Sojuconians' slogan "Lend a hand for the concert grand" raised \$1,500 for a grand piano.



Floyd Greenleaf

Senior Vice President for Academic Administration

Southern College closed its first century on May 3, 1992, by graduating 382 students, the largest class in several years. These graduates represented 31 baccalaureate programs, 10 associate degree programs, and one certificate program. Probably the most important statement that one can make about the academic program this past year is to say that it has recovered and stabilized after the trauma of enrollment decline and retrenchment that characterized the years 1982-87.

Southern's academic offerings include professional and pre-professional curricula that deserve mention. Students may enroll in four allied health programs, one of which leads to a baccalaureate degree and allows the student to enter the job market directly, and three to associate degrees that are preparation for professional schools. Approximately 85 students are now enrolled in these programs.

During the Centennial year, professional curricula in nursing, teaching, and business attracted 618 students distributed among a dozen degree programs. In addition, 123 pre-med students, 36 pre-law students, 73 prospective secondary teachers, and more than 30 students scattered in pre-engineering, pre-dental, and other non-degree allied health programs enrolled.

Other professional curricula include a wellness degree that enables graduates to lead or assist in industrially sponsored health programs. More than 25 regularly sign up for this degree. The three choices of journalism—news preparation, broadcasting, and public relations—have stabilized at 45 to 50 students. The final professional field is theology, with 60 to 70 students planning on careers in the ministry.

One of the most significant aspects of the professional fields is the restructuring of the elementary teacher education program. Whereas teaching licensure itself previously constituted the degree, the new plan requires students to major in one of three substantive fields before earning licensure to teach at the elementary level. The new program allows students to select a degree in psychology or one of two interdisciplinary degrees, one in math and science and a second in social studies.

English and history, two fields in the traditional liberal arts, are enjoying a

From 1906 to 1912 the entire faculty gave exams in each class on the 4th Tuesday of every month.

resurgence. These two departments shared 77 majors during the Centennial year. Applications for the first year of the new century indicate continued growth.

The instructional faculty are to be commended for their support of staff development. During the Centennial year eight faculty, including newly hired instructors, were progressing satisfactorily in their doctoral studies and four completed their terminal degrees. Two faculty are conducting research funded by the National Science Foundation and four more are involved in major research projects funded from private or institutional sources. Many faculty are engaged in scholarly activities beyond the demands that the classroom places upon them. The majority of faculty participate in learned societies and scholarly meetings for their professional growth.

Southern College's academic program continues to adjust to the needs of the post-retrenchment era. Measured in volume of student traffic, the institution is weighted in favor of professional education, but its traditional arts and sciences departments provide a vitality and balance to the General Education component required of all students.

It is the conviction of the faculty that spirituality and academic excellence are not mutually exclusive. In keeping with that belief faculty have been gratified to learn that the results of surveys show that students leave Southern College more firmly committed to spiritual values than when they arrived. Southern College faculty and students begin their second century with optimism. ■

In 1923 only one Southern faculty member held a master's degree, and four held bachelor's degrees.



Areas of Study

Bachelor degree (four-year) programs:	Office Administration
Accounting	Physics
Behavioral Science	Psychology
Biology	Public Relations
Broadcast Journalism	Religion
Business Administration	Social Work
Chemistry	Spanish
Computer Information Systems	Wellness Management
Computer Science	Elementary education licensure with
English	majors in:
French	Psychology
German	Social Science (language arts emphasis)
Health, Physical Education,	Social and Natural Science Studies
and Recreation	Associate degree (2-year) programs:
Health Science	Accounting
History	Allied Health (three fields)
International Studies	Computer Science
Journalism	Engineering Studies
Long-Term Health Care	General Studies
Management	Nursing
Marketing	Office Administration
Mathematics	Technology (two fields)
Medical Technology	Pre-professional programs are offered in 12
Music	health fields and in engineering and law.
Music Education	One-year certificate program is offered in
Nursing	Auto Body Repair.

Dale Bidwell

Senior Vice President for Finance

With great joy we received the unaudited May 1992 financial statement showing that Southern again ended a fiscal year in the black. This is the sixth consecutive year for the school to be in such a position. The gain was not large, but we are gratified to have it at approximately \$90,000. We give glory to the One who has His hand over this institution.

This fiscal year has seen some major projects completed and several started. To name a few:

1. **Hles PE Center Storage and Lobby.** With assistance from the Committee of 100, additional storage was added to both sides of the lobby while the area was improved in efficiency and atmosphere.
2. **Southern Carton Industry.** A new work opportunity for students received major funding of \$300,000 from the Committee of 100. The operation began August 2, 1992, at 3:03 p.m. Wayne Janzen manages some 55 students working four-hour shifts.
3. **Fleming Plaza.** A major face-lift will improve general appearance, lighting, parking lots, and efficiency of the Village Market entrance. The Committee of 100 aided this project by \$300,000. Target for completion is about four months.
4. **Sewer Project.** This major undertaking, completed in November 1991, cost in excess of \$650,000 but is already reducing monthly infiltration costs. As a result the project will have paid for itself in about three years.
5. **Industrial Drive.** "Years" would be the only term groundskeeper Ray Lacey could use to describe the time spent planning and working on this improvement. Completion of paving and landscaping was celebrated on April 13.
6. **Personnel Changes.** On May 31, Louesa Peters, chief accountant and assistant treasurer, retired after 42 years of denominational service, 28 of those at Southern. Burt Pooley has joined the staff as chief accountant. He brings a wealth of accounting experience and certification by the General Conference Trust Department. Last August Elsworth Hetke joined us as director of personnel and student labor. Complexity of employment laws demanded professional assistance. The first year was busy, especially with the opening of Southern Carton Industry and the challenge of placing more students with on- and off-campus employment.



In 1896 boarding students paid \$2.50 per week for meals, room, fuel, and lamplight.

7. **Debt Reduction and Housing.** Despite these activities and others, we keep “picking away” at our indebtedness. We purchased some houses adjoining the campus that we felt would be in our long-range best interest. This has taken liquid resources and in one situation we added slightly to our indebtedness by assuming a loan. Yet, total indebtedness ending May 31 was reduced to \$1,452,891, a reduction of \$66,000 since a year ago. I will not be satisfied until we are completely out of debt.

The future is always unknown, yet we have tried to take care of some major projects while income permits so that operating expenses can be cut in the future without jeopardizing instructional programs. Here is a brief outline of some upcoming challenges:

1. **1992-93 Operating Budget.** Although the budget was built on 1220 students and 43 less than actual for 1991-92, a concern is that the recession will bring fewer students with ability to pay. Every effort has been made to keep costs down, but when parents are out of work, this affects enrollment. Government funding to students has not kept pace with inflation. The gap continues to place larger demands on students/parents and college scholarships.

2. **Talge Hall.** We need to complete the unrenovated rooms. If demographics are correct, we must be ready for an increase in male census by 1995.

3. **Student and Staff Housing.** The Board of Trustees has voted to phase out and replace the mobile home park with new energy efficient accommodations for students. Architectural plans and a financial package for funding are being developed. The site of the old clinic building is the proposed location for this housing project.

4. **Energy Management.** By year-end, all major buildings on the west side of Campus Drive will have some form of energy management control system. The PE Center urgently needs its 13 resistive-heat furnaces replaced by energy-efficient units tied into the energy management control system. The cost will not be small but should pay for itself in 2.95 years through energy saved.

Many important projects were not mentioned. The needs are pressing and it often boggles the mind to know where to put the priorities. It is the support of faculty, alumni, parents, students, the board, and generous friends that makes Southern a success. It is my hope that one year from now I can say “*There we go again*” because of another fiscal year with operations in the black. ■

During the 1913-1914 school year weekly meal charges were raised from \$1.75 to \$2.00.



Thank you! For one hundred years Southern has grown and borne fruit because of a long list of individuals and organizations who have shared their resources to support its mission and programs.

The following list of recent donors is cumulative and includes those who have given \$250 or more within the past three fiscal years (between July 1, 1989, and May 31, 1992). Patrons gave in the most recent fiscal year.

Every attempt has been made for accuracy. If by chance your name has been misspelled, inadvertently omitted, or misplaced, please accept our sincere apologies and advise the Development Office.

-first time in category *deceased

Donor Gift Clubs

President's Circle \$25,000

Anderson, Eugene
 Berner, Perry & Anne
 Bottomley, Flip & Marilyn
 Bowen, Dewitt & Josie
 Bowers, Robert & Norma
 Burdick, Paul & Bille
 Cason, Bud
 Castleberg, David & Evelyn
 Clark, D. J.
 Cooney, *Cecil & Barbra
 Cothren, Frederic & Edythe
 -Cowan, Edward
 Cowdrick, Jesse & Grace
 Dart, *Merrill & Mona
 Dean, Olivia
 Fleming, Jr., Chick & Betty
 Hall, Albert & Novella
 Hickman, Jim
 Hulsey, Bill & Myrtle
 Hunter, Don
 Iles, Bill & Jean
 Johnson, Oscar & Mary
 McElroy, Buddy & Joy
 McKee, Debra
 McKee, Ellsworth & Sharon
 McKee, Jack & Betty
 McKee, O. D.
 McNeilus, Denzil & Donna
 Nelson, William R.
 Preston, Forrest
 Reynolds, *Maurine
 Ruf, A. F.
 Schill, Jean Wingate
 Schmidt, Ehrich
 -Taylor, Dennis & Joan
 Taylor, William & Elsie Mae
 Ulmer, Sanford & Martha
 Wilson, Charles
 Wood, Elmira

Century Associate \$10,000-25,000

Baker, Sue
 Barto, Michael
 Blair, Mardian
 Bourland, T.G.

Bovd, *Jimmie
 Bovle, Jim & Darleen
 Brock, Richard
 Butterfield, Art
 Byrd, Cookie
 Campbell, Thomas
 Cardev, Audrey
 Chastain, Chalmer
 Chen, Tony & Delma
 +Clark, Jerome & Ann
 Coppock, Lucille
 Cross, Darrell & Billie
 Curry, Walter & Nancy
 Cushman, Willis & Thelma
 Davis, K.R. & Jeanne
 DeFoor, Kenneth & Judith
 -Duge, John & Mildred
 -Durichek, Sr., John & Helen
 Elkins, Harold
 Eureka, Dewey
 Fuller, Forrest & Norma
 Fuller, Fred & Dottie
 Garner, Julius & Beverly
 McKee, Jr., Rusty
 Messinger, *Harold
 Murphy, Bob & Anne
 Reiner, Richard & Lynnet
 +Smith, William
 Stevens, John & Wyn
 Taylor, Victor & Ruth
 Zinke, Edward

Adams, Robert
 Andrews, Frances
 Brickman, Theresa
 Cross, Jessie
 Cursetjee, Xerxes
 Cursetjee, Zareer
 Ford, Carroll & Betty
 Hoosier, Mananne
 -Howell, Walter
 -Jaacks, Ronald
 Jones, Marcy
 -Kerr, Elton & Marga
 Lawing, Lloyd & Ethelene
 -Lechler, Donald & Linda
 Levering, Thelma
 -Mallernee, Rollin & Karen
 +McKee, Christopher & Janel

Spanos, *Alberta
 Tait, Reid & Ardith
 Waller, Louis & Sue
 -Wilkins, Charles & Bonnie
 Williams, James
 -Winters, David & Judy
 Woodall, Hermon

Diamond Associate \$7,500-10,000

-Baehm, George & Tena
 Berkey, Jr., William & Candy
 Chong, Dayton
 -Crandell, William & Doris
 Donald, Ruby
 Graves, Charles
 Gullev, Norman & Leona
 -Havnes, Carole
 Jacobs, Troy
 -Liu, Ruth
 McElroy, Jav & Stephanie
 McKee, Jr., Rusty
 Messinger, *Harold
 Murphy, Bob & Anne
 Reiner, Richard & Lynnet
 +Smith, William
 Stevens, John & Wyn
 Taylor, Victor & Ruth
 Zinke, Edward

Golden Associate \$5,000-7,500

Adams, Robert
 Andrews, Frances
 Brickman, Theresa
 Cross, Jessie
 Cursetjee, Xerxes
 Cursetjee, Zareer
 Ford, Carroll & Betty
 Hoosier, Mananne
 -Howell, Walter
 -Jaacks, Ronald
 Jones, Marcy
 -Kerr, Elton & Marga
 Lawing, Lloyd & Ethelene
 -Lechler, Donald & Linda
 Levering, Thelma
 -Mallernee, Rollin & Karen
 +McKee, Christopher & Janel

Payne, Larry & Doris
 Reinsnyder, Edward
 Richert, Lindley & Charlene
 Saturno, Malinda
 Simmons, Marion
 Speyer, John
 Taylor II, William & Pam
 +Vigh, Alexander & Susonva
 Vollmer, Marv
 Werner, Tom
 Wong, John & Alice

Silver Associate \$2,500-5,000

Adams, Flora
 Austin, Wiley & Alice
 Barrow, Ron & Colleen
 -Bass, Michele
 Bowers, David
 Bovd, Dorothea
 Boyd, Miriam
 Burdick, Al & Doris
 Cashman, Marion
 Chastain, Andrew & Shirley
 Cowdrick, *Elizabeth
 -Crandell, Merwyn & Donna
 Cruise, Joseph
 Davis, James & Martha
 Davis, *James
 +Downs, Nevin & Myrtianne
 Drayson, Ronald
 +Farrow, Joe
 Fisher, Buddy
 Fitcher, Cyril & Gladys
 Garver, Phillip & Betty
 Hall, Stephen & Mary
 Hamilton, Ted & Jackie
 Hanson, Larry & Eleanor
 Haupt, William & Jill
 Henson, Shandelle
 +Hittle, Ted & Debbie
 +Houck, Duane & Florence
 Huggins, Delwin & Dia
 Jensen, Robert
 Jewett, David & Jenny
 Johannes, Joseph
 +Johnson, Harold & Harriet
 Keele, Arlie & Jennie
 Lambeth, Carl
 Larsen, Richard

Adams, John
 Alexander, James
 Ammons, Robert & Frances
 Anderson, Judith
 Andrews, James
 Arburn, Dorothy
 +Ashlock, Jim & Betty
 Ashlock, Marcella
 Ashton, Bruce & Leila
 Avant, Eddie & Diane
 Baker, Ruth
 Bandiola, Ben
 +Bauer, David

Loh, Daniel
 Malgadey, Peter & Beth
 McFarland, Thomas
 Metcalf, Bill
 Mitzelreit, Richard
 Morris-Derek & Bodil
 Patterson, Barry
 -Phillips, Harold & Betty
 Reynolds, *William
 Richards, Evan & Ruth
 -Ringer, Bruce & Bobra
 -Rogers, Herbert
 Rolfe, Cecil & Rhea
 Rozell, Daniel & Joann
 Rut, Rolland & Tina
 Shaw, Rahn
 Sias, William & Esther
 +Sloan, Richard & Thvra
 Smith, Raymond
 Spears, Kenneth & Mildred
 Sue, Bill & Rubye
 Thompson, *J. C. & *Sue
 Townsend, Dale & Janet
 Von Maack, Wolfgang & Hazel
 -Watson, Paul & Ruth
 Whidden, Charles & Jewel
 Whitehead, Henson & Lois
 Willis, William & Jan
 Wygal, Benjamin

Ambassador Club \$500-2,500

Abbott, Maurice & Dorothy
 Abu-el-haj, Fawzi
 Abu-el-haj, *Joan
 Acuti, Calvin & JoAnn
 Adams, Elison & Barbara
 Adams, John
 Alexander, James
 Ammons, Robert & Frances
 Anderson, Judith
 Andrews, James
 Arburn, Dorothy
 +Ashlock, Jim & Betty
 Ashlock, Marcella
 Ashton, Bruce & Leila
 Avant, Eddie & Diane
 Baker, Ruth
 Bandiola, Ben
 +Bauer, David

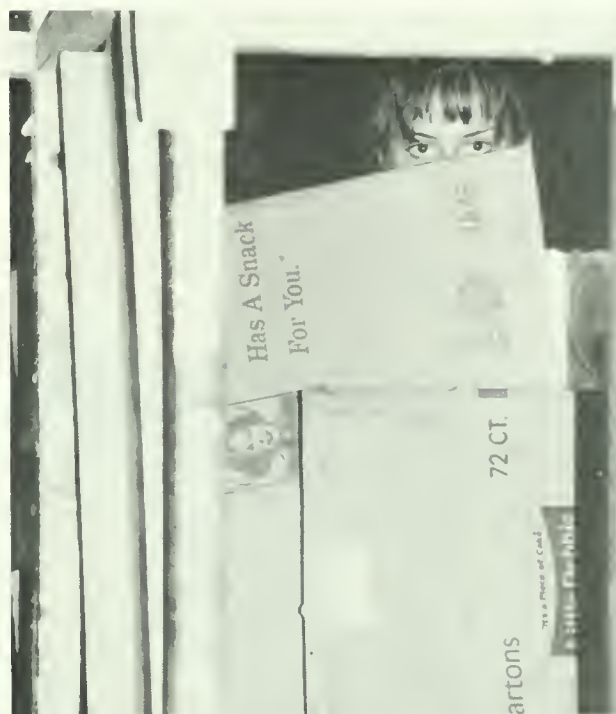
+Bennett, Bobby
 Bennett, Doug & Nell
 Bishop, Sr., Wilber & Helen
 Blake, Steven & Robyn
 Blanco, Jack
 Bogovich, *George
 Bohannon, Donald
 Bolton, Bob & Becky
 +Boskind, Andrew
 +Bothe, Brian & Barbara
 Bottsford, John & Jane
 Bowen, Bob & Dottie
 Boyd, Velma
 +Brackett, Clyde
 Brackett, Jeanette
 +Brackett, Wayne
 Braley, Olive
 Brannan, William
 +Breadahl, Douglas
 Breece, Raymond
 +Brown, Koy
 Brown, Maxine
 +Bryan, William
 +Buck, Elsie
 Bullock, Thomas & Naomi
 Burchard, Robert & Ann
 +Burns, Richard
 Burton, Alfred
 Butler, Howard
 +Cabaló, Gery
 Carpenter, William & Doris
 Center, Richard
 Chisholm, Darrell & Evelyn
 Clark, Walter
 Clifton, Keith
 Cloutier, Clarence
 Comstock, Delos
 +Cookson, Royce
 Coolidge, Bert
 Coolidge, Everett
 +Cooper, Donald & Diane
 +Corbett, Hilbert
 Cothren, Elisabeth
 Cowdrick, Mary
 Cowdrick, Robert & Dorothy
 Crawford, Roland
 Culpepper, James
 Culpepper, Judy
 Cummings, Des & Mary
 Dannenberger, Martha
 Dart, Mona
 Davis, Scott
 De Vasher, Bernard
 +Degrave, Sheri
 DeLay, Judy
 Dick, Donald & Joyce
 +Dingle, Roy
 Dittes, Albert & Patricia
 +Downs, Shawna
 Dysinger, William
 Elam, Marv
 Eldridge, Gary & Ellen
 +Epperson, Jim
 Erickson, Richard
 Eusev, Kathryn
 Evans Dwight & Donna
 Folkenberg, Robert
 +Fox, Archie & Lorraine
 Friberg, Jr., Russell
 Fuller, Glenn & Jeannine
 Fuller, Myrtle
 Geary, William
 Gibson, *Ruth
 Gilbert, Orlo & Ellen
 Goxh, David & Kathy
 Goodbrad, John & Ruth
 Gordon, Malcolm
 Grantier, David
 Green, Jon
 +Green, Richard & Elaine
 Greenleaf, Floyd & Betty

Grisard, Dena
 Gusso, Rick & Millie
 Hakes, Robert & Marjorie
 Harlow, Bruce
 +Harris, Pamela
 +Harrison, Billie
 Harrison, Estrella
 Hartwell, Thelma
 Hedrick, Mary
 Hettlerin, Ray & Inelda
 +Hendershot, Lewis & Anne
 +Henderson, Ben
 Henderson, Lyle
 Herin, Mazie
 +Hersch, Louis & Lorabel
 Hess, Chuck & Debbie
 Holland, Judy
 Hooper, Ralston & June
 Hunt, Bonnie
 Hurt, Louise
 Jackson, Edward
 Jacobs, Ray
 Jimenez, David
 Johnson, Anna
 Johnson, Dean
 +Kelly, Ronn
 Kenn, Fisher & Gladys
 Keppler, Burton & Dorothy
 Kinder, J. B. & Neva
 Kinsey, Dean & Martha
 Kinzer, Suzanne
 Klasing, Donald
 Klein, Eddie
 Kochenower, Ben & Teresa
 Koester, Carl & Beverly
 +Korff, Renou
 kuhlman, Boots & Marian
 Lacey, Charles & Gloria
 +Lane, Eric
 Leas, Larry
 +Lemon, Jean
 Liles, Aubrey & Barbara
 Lilly, Michael & Delynne
 +Lippert, Richard & Karen
 Macdonald, Nellie
 Magoon, David & Sue
 Marlowe, James & Linda
 +Martin, Douglas & Jerri
 Martin, Edwin
 Mashburn, Joe & Sally
 May, Joyce
 McAllister, Ione
 McArthur, Ben & Caroline
 McCandless, Skip & Mary Lou
 McClure, Alfred & Frances
 McClure, Warner & Evelyn
 McLarty, Gary
 McMillan, Frank & Nancy
 +McMillan, Paul
 McMillan, Robert & Betty
 McNulty, John & Frances
 +Meadows, Lee
 Medford, *Menton
 Meister, Adam
 Meister, Richard
 +Michaelis, Charles & Naomi
 Miller, Scott
 Mizelle, Dianne
 +Moore, Benny & Barbara
 +Moore, P.J.
 Moore, Robert & Lois
 Morris, James & Brenda
 Morrison, Robert & Patricia
 Murdoch, Ruth
 Muschette, Vivian
 Neal, Edward & Linda
 Nooner, Darrell
 +Norris, Durell
 Okimi, Wayne
 Orange, Patricia
 Palmour, Frank & Patricia

Palsgrove, John & Carol
 Parker, David & Marilyn
 +Parker, Philip
 Payne, Bruce
 Peek, Leon
 Perdue, Ramon
 Petersen, Margarete
 Pierce, Chuck
 Pierson, Pauline
 Piter, John & Lorraine
 Pritchett, Gary
 +Ramrez, Ted
 Read, Peter
 Reid, Edward & Kathy
 +Reid, Nelda
 Remmers, Eugene & Carolyn
 +Reynolds, Mable
 Richards, Bill & Evonne
 Richards, E. E.
 Richert, Jr., Arthur & Joyce
 Ritchie, Max & Kay
 Robertson, Marvin & Jeanie
 Robinson, Ralph
 Sahly, Don
 Santord, Darleen
 Sauls, Lynn & Helen
 Schmid, Harold
 Schriber, John & Marilou

Servoss, Ronald & Sue
 Shankel, Clinton
 Shaw, Carl & Debra
 Shim, J.T.
 Short, Donald & Garnette
 Slapper, Debra
 Slikkers, Robert
 Smith, Earl
 Smith, M.D., Warren & Elouise
 Smoot, Grady & Irma
 Sowers, Nellie
 Spady, Linda
 Spears, Don & Shirley
 +Sperrazza, Robert & Jackie
 Steele, Dennis & Libby
 +Stepanske, Bruce & Jeanette
 Stephenson, Rochelle
 +Stone, Terry
 Stophel, Glenn
 Stophel, John
 +Strayer, Brian
 Summerour, Brooke
 +Sumpter, Ward
 Sutton, Lavton
 Swarner, Ward & Julia
 Tat, Bradley & Jill
 +Terrell, Richard & Sharon
 +Thoresen, Nelson & Brenda

Thurmond, James & Judy
 +Tolhurst, Frederick & Jane
 Towles, Eddie
 Travis, Paul & Grace
 Troxel, Josephine
 +Truax, Gene
 Tucker, A. R.
 Turlington, Drew & Rita
 Vallieres, Scott & Sharlyn
 Van Arsdell, Marcia
 Van Dolson, Leo
 VandeVere, Wayne & Evelyn
 von Henner, Chan & Rosalie
 +Walters, Clyde & Merrie
 Wareham, Alice
 Warren, Steven
 Weaver, Leslie & Diana
 West, Jr., Donald
 West, Sr., Don & Florence
 Westbrook, John
 Whitehead, Ronald & Betty
 Wiese, Calvin & Tammy
 Wilhelm, Kathryn
 Will, Stanley & Bennie
 Williams, Larry & Nellie
 +Williams, Russell & Genevieve
 Wilton, Don
 Wittenberg, Merlin & Janice



Students Have New Job Opportunities

On August 2 operations began at Southern Carton Industry's new plant on the campus. Patricia Skender, shown peeking over cartons, is one of the fifty-five students employed at the cardboard box recycling plant which serves McKee Foods Corporation. An estimated 19 million cartons are recycled annually. Dr. Wayne Janzen is manager of SCL. Other campus employers include the Village Market, the Campus Shop, the College Press, and campus departments and services such as Grounds, Security, Service, cafeteria, and residence halls, as well as instructional and administrative departments. Nearly all students work, either on campus or near by. (Photo by Matt Niemeyer)

+Wohlers, William & Rita
Wong, Robert
Wood, Robert
Woodall, Irene
Yelvington, Clare
Young, Richard & Phyllis
+Ziegler, James & Freda

**Loyalty Club
\$250-500**

Anderson, Gene
+Anderson, Mark & Nancy
+Artress, Mary Kay
+Bartram, Jerry & Chris
Bennett, Harry & Erce
+Benton, Patricia
+Bischott, Frederick
Bishop, Loren
Bishop, Robert
+Bodtker, Marceil
Boksberger, Hans-Peter
Boyson, Jack & Beverly
Braley, Bradford
Brock, Robert & Debbie
Brown, Ronald & Glenda
Brownlow, Joseph & Heather
Bunn, David
+Burnett, Frank & Helen
Butler, Alma
+Calloway, Larry & Kimberly
+Chase, Donald & Michelle
Cherne, Brent & Tammy
Chisholm, Cheryl
Christiansen, Hugo
Closser, James & Myrna
Coolidge, Bill
Costersan, Francis
+Costersan, Frank
Cothren, Jack
Coulter, Wayne & Sharon
+Cress, David & Lynn

Crowder, Kathryn
Dart, Archa
Davis, Cecil & Doris
Davis, Scott
Dawat, Laneta
+deCarmo, Linden
Deloney, George
Dickerhoff, Beverly
Doggette, Jackson
Dresser, Emily
Duerksen, Russell
Earp, Royce
East, Robert & Marie
Eller, Edward & Tracy
+Everts, Dave
Falk, Pete & Marie
Filler, Judson & Carlene
Finley, Lyle
Flach, Charles & Barbara
Fowler, John & Marilyn
Fuller, George & Sally
Gallimore, Lyndon & Evonne
Gardner, Roger
Gentry, David
Gentry, Michael & Joanne
+Giang, Sarah
Gimbel, Gregory & Karen
Glenn, Danette
+Goeckeritz, Bruce & Laurel
+Graham, Obed & Coretta
Griffin, Peggy
Crott, Marguerite
+Hall, Donald
Haluska, Jan & Marcia
Harrelson, Amos
Harris, Charles & Ruth
Haupt, Ronald & Fave
+Haveman, Jan
Hawthorne, Bill & Mary
Hay, Linda
Hendershot, Ralph
Henderson, Wilfred & Mary
Hendry, Malone
+Hobbs, Stan & Barbara

Hodgkin, Jeanie
Holland, David
Holmes, Oliver & Laura
+Hoose, Leonard
Horsley Brooks
Hughes, Claude & Winnie
Hughes, Ross & Betty
Huh, Young & Katherine
Ingram, Ruth
+Irizarry, Kathryn
Jackson, Connie
+Jaacks, Steven & Carmen
Jenks, Lowell
Keith, William & Nellah
Kjak, Marie
King, Roger & Jolena
Klaver, John & Louise
Koudele, Charles & Betty
Krause, Kassandra
Kuester, William
Kuykendall, Fred
Lamb, Edward & Katie
Lampert, Judy
+Laubach, Chauncey & Florence
Leach, Roger
Ledford, Archie
Leech, Joseph
Lindsev, Charles & Sharon
Loettler, Mark
+Loren, Robert & Clymera
Loy, Monroe & Louise
Lynd, Audice
MacLattery, Merritt
Markoff, David
Marlin, Deborah
Massengill, Cloie
+Mauldin, Lorraine
May, Paul
+McCaughan, Cindy
McClure, Herbert
McFarland, Ina
McGhee, Earl
+McGrady, Jay
McMillan, Sally

+Medford, Lucy
Merriman, Houston & Marganta
Mills, Brooker & Joyce
Mitchell, Alfred & Viola
+Moody, Richard
Moore, Evelyn
Moore, Jones & Patricia
Mote, Donald & Rene
Myers, Clifford
Nelson, Harry
Nelson, Katrina
Nelson, Lorene
+Nvirady, Stephen & Laura
+Odom, Myrna
Oldham, Ray
Olsen, Allen
Olsen, Oluf
Olson, Jessie
+Parrish, Todd & Lisa
Payne, Donald & Opal
Perez, Arturo & Pearl
Peters, Louesa
Peterson, Judy
Raitz, Robert
+Raitz, Vivian
Rausch, Robert & Judith
Reiber, Evelyn
Reiber, Milton & Eunice
Rickaby, Jerry & Linda
+Rimmer, Neita
Robertson, Debi
Roddy, Faira
Rodgers, Rozelle
Schieter, Mark
Shatter, Duane & Nancy
Sharian, Serphouhi
Shelden, Raymond & Emalyn
Shields, Ruby
Shorter, Roland & Louise
Shull, John
Silver, Bob & Patricia
Smith, David & Cherie
Snyder, Richard & Patricia
Soler, Eddie

Sorensen, Niel & Ruby
Soule, Joseph & Helen
Spears, Steve & Marcie
Stanley, Richard & Coleen
+Stauffer, Lester
Steen, David & Linda
+Stewart, Ervin & Eleanor
Strefling, Ruth
Swigart, Carmen
Taylor, George & Margaret
Theus, William & Deborah
Thompson, Margaret
Thompson, Verle & Deborah
+Thornton, Richard
+Tol, Bill & Carol
Tolhurst, Ethel
Trummer, Max & Esther
+Underwood, Anne
Vance, Kenneth
+Veltman, Fred & Renie
+Wampler, Bill
Warner, Carol
+Watson, James
Watson, Ron
West, Kenneth & Delby
Wickwire, Adele
+Wilkins, Darryl & Laura
Wilson, Donald
+Wilt, Albert
Wood, Betty
Workman, Allen & Melinda
Zeman, Daniel & Cookie
+Zollinger, Le & Freda

**Patron Club
\$10-250**

A
Aalborg, Bryan & Sharon
+Aalborg, V. Carol
+Abanto, Carlos
Adams, Evan & Alicia
Adams, Jessie
+Adams, Michael
+Adema, Rachel
+Agule, Marie
+Alderman, Evelyn
+Allen, Doug
Allen, Neil & Cynthia
+Altizer, Robin
+Anderson, Helene
+Anderson, John
+Arbour, Toni
+Arnett, Timothy
+Ashworth, Ruth
Atkins, Jake & Beverly

B
Bacheller, Orren & Rachel
Badger, Kevin
Baez, Thomas & Rita
+Baghdodian, Linda
Bainum, Renee
Baldwin, Mildred
+Barefoot, Travis
+Baskerville, Joycelyn
+Bates, Rachel
Bauman, Herman & Janice
Begley, Scott & Deborah
+Bender, Karen
+Bennett, John
Bennett, Peggy
+Berg, Lisa
Berghern, Brian & Debbie
+Berghern, Bruce & Ellen
+Bergstrom, Heidi
Berkon, Josephine
Bevis, John
+Bible, Tonya
+Bietz, Gina



Generosity of Committee of 100 Helps Launch New Industry

With \$300,000 from the Committee of 100 toward construction of a 22,400-square-foot building, the newest campus industry, Southern Carton Industry, has a new home. The structure was occupied in 90 days, in the vicinity of the trailer park now being phased out. The recycling of cardboard cartons provides employment for 55 students in four-hour shifts. Larry Lighthall, '92, is among the full-time workers. (Photo by Matt Neimeyer)



Corporate Gifts Important to Capital Campaign

Among the many corporate donors who have given or pledged for the Science Center Centennial Campaign is Savannah Foods. Ed Brantley, center, representing Savannah Foods, is shown presenting a \$10,000 check to President Don Sahly. With them at the left is Bill Krause, a vice president at McKee Foods Corporation and alumnus of Southern College. (Photo by Jim Ashlock)

- Bietz, Gordon & Cynthia
- +Bietz, Julie
- Bignall, Orville & Selene
- Birch, Beverly
- +Birchfield, Danise
- +Bissell, Kandy
- +Blake, Timothy
- +Bledsaw, Lisa
- +Bledsoe, Helen
- +Blomelev, Geoffrey
- +Boggess II, Richard
- +Boles, B. J.
- Boles, Joseph
- +Bonjour, Sheila
- +Boone, Stephen & Kerri
- Bovd, Melanie
- Brackett, Angela
- +Bradley, Gary
- +Bradley, Jeannie
- Brand, Jay
- +Brewer, Michael
- +Broadbent, James
- Brooks, Clyde & Louise
- +Broome, Robert
- Brown, Bevin & Kathie
- Brown, Ellen
- Browne, Deborah
- +Brownlee, Lisa
- +Bruce, Johnny
- +Bruntz, Kerry
- Bucher, Larry & Carol
- +Bullock, Angela
- Bunch, Patricia
- Borch, Alta & Tralece
- +Burdick, Janene
- Burgal, Cindy
- +Burke, Sherie
- Burnham, Gilbert & Virginia
- +Burrill, Timothy
- +Borris, Joy
- +Bvers, Anita
- +Byrd, Florence

- C
- +Caison, Thelma
- Caldwell, Richard
- Cannon, Chip & Andrea
- Cantrell, Jacquelyn
- Carey, Michael & Inette
- +Carr, Kathleen
- +Carson, Kristina
- Caudill, Billie
- +Cauley, Mike & Dottie
- Chair, Nicolas
- +Champion, DeAnn
- +Chapman, Wendy
- +Cheatham, Dianne
- Cherne, Melvin
- Chesnev, Evan & Jan
- +Chesnut, Marsha
- Chesnut, Edna
- +Chicote, Warren
- +Chin, Harold
- +Choi, Soo
- +Chon, Ben
- Christian, Bertha
- +Cingliano, Anthony
- +Ciutti, Ida
- Clark, James
- +Clark, Judy
- +Claxton, Marvin
- +Cobb, Shirley
- Cochran, Todd & Mary
- +Cole, Darvl
- +Cole, John
- +Collins, Dale
- Connell, Walter
- +Constantine, Eugene
- +Cooper, Jennifer
- Coppess, Douglas
- Corbett, Bernard & Patricia
- +Corbett, Byron
- Coston, Lorie
- Cotton, David
- +Covel, Virgil & Pati

- Covrig, Bryant & NaLonna
- +Cox, Adrienne
- +Cox, Christopher
- Crabtree, Isabel
- Crabtree, James & Judith
- +Crandell, Kristi
- +Crandell, Merwyn
- Craven, Ruth
- +Crawford, Jolie
- Crowson, Gene
- +Cruz, Mariline
- +Colp, John
- +Currie, Carl
- +Cushman, Katherine
- D
- Dahl, Jeannette
- Dantorth, Julia
- Dart, *Teddy
- Day, Thomas & Cynthia
- +de los Rios, Raiza
- +de Flaiter, Mark
- +Dempsey, Richard
- Dennison, *Ira
- +Denton, Celia
- DeVasher, Alescia
- +Di Domenico, Keith
- Dickinson, Robert & Ruth
- +Dike, Wendy
- +Dille, Charlotte
- +Dobson, Melody
- +Doz, Edward
- Dortch III, Howard & Stacy
- Dos Santos, Roy & Wanda
- +Downs, Warren
- +Doyle, Bernard
- +Doyle, Marj
- +Draper, Pamela
- Draper, Sheila
- Dudley, C.E.
- +Duff, James
- +Durichek, Jettrev

- Durichek, Jr. Peter
- +Durkin, Martin & Connie
- Dutton, George & Joy
- Dysinger, John & Pamela
- E
- Edgerton, Debby
- Egolf, John & Carol
- Eirich, Paul
- +Eisele, Kenneth
- +Ekford, Ingrid
- +Emde, Brad
- Engelkemier, Brenda
- +Erickson, Rhonda
- +Ericson, Heather
- +Ericson, Kara
- +Ermsar, Harold
- Erwin, Jim
- Evans, Ted
- F
- +Faerber, Leigh
- Farr, Henry
- +Fautheree, William
- Ferguson, Dana
- +Fitzgerald, Troy & Julia
- Flowers, Patricia
- +Fluharty, Kelli
- +Follett, Kelly
- +Ford, Stephen
- +France, James
- +Frederick, Andre
- Frederick, Daniel & Rosalie
- Freeman, Richard & Cathy
- +French, Courtney
- Fried, Michelle
- +Fries, David
- Fritts, Susan
- Fuccillo, Virginia
- +Fulbright, Robert
- Fulter, James

- G
- Gager, George & Martiel
- +Gallagher, Christine
- Gano, David & Deborah
- +Gardner, Kristin
- +Garver, Greg
- +Gates, Don
- Geach, Robert & Mabel
- Gearhart, Berniece
- Genton, Lola
- +Gimord, Ruth
- Gilbert, Russell
- Gilkeson, Jerry & Eve
- +Gilliam, Randal
- +Gillis, Jack
- Gipson, Alicia
- Glander, Genevieve
- Colightly, Dennis
- Goodge, Kimberly
- +Gordon, Thomas
- +Graham, Alan & Gina
- Graham, Joseph & Donna
- Gravener, Kenneth
- +Graves, Evelyn
- Graves, George & Melanie
- +Gray, Allen
- +Green, Deborah
- Greene, James & Joyce
- +Greene, Tricia
- +Guider, Barn & Cheryl
- Gullew, James

- H
- Hack, David & Amy
- +Hagan, Roy
- Hagopian, Greg
- Hakes, Jim
- +Hall, Catherine

- +Halley, Jr. John
- +Hallock, Kevin & Janette
- Hamel, Lyle & Helen
- +Hamilton, Daniel
- +Hamman, Sonny
- Hammond, Bill & Kathryn
- +Hanson, Kar-n
- Harding, Kenneth & Eva
- Harris, Charles & Judith
- Hartwell, Ray & Jeanne
- +Haskew, Barbara
- Haves, William
- Havnes, Paul & Polly
- Hayward, Joe
- +Heath, H. L.
- +Hecht, Margaret
- Hendershot, Hoyt & Hazel
- Henderson, O.R. & Mary
- Henning, Volker & Linda
- Henriquez, Xiomara
- +Herbert, Heather
- +Herbert, Scott
- +Herren, Gregory
- Herzel, Pastor
- +Higgs, Cindee
- +Hillver, Harvey
- Hinson, Kathryn
- Hirsch, Karen
- Holden, Paul
- +Holland, Pamela
- +Holtry, Rebecca
- +Hopwood, Stephanie
- +Houghtaling, Daniel & Ann
- House, Desiree
- Howard, Art & Shirley
- +Howes, Charles
- Hovt, Emery
- +Hubbard, Bob
- +Hudson, Maria
- +Huey, M. Michelle
- +Huey, Michelle F.
- Hunt, Kately
- +Huse, Claire
- Hutton, Phyllis

- I, J
- +Illick, Debra
- +Isaacs, Mitzie
- +Jacoban, Robert
- Jacobs, Jamile & Lois
- Janzen, Marie
- +Janzen, Barry
- +Jas, Raul & Jennifer
- +Jetters, Kenneth
- +Jehle, Don
- +Jenkins, Eunice
- Jenkins, Margaret
- +Jensen, Donna
- Jewell, Everett
- +Job, Peter
- Johnson, James & Sylvia
- Johnson, Jean
- Johnson, Lillian
- Johnson, *Marjorie
- Johnson, Thelma
- +Johnson, Vanessa
- Joiner, James
- +Joiner, Larry
- Jones, Elvina
- +Jones, Holly
- +Jones, Jettrev & Tammy
- +Jones, Tracie
- +Jones, William & Cathy
- +Jordan, Nichole
- Just, Avolt

- K
- +Kang, Hyoung
- Kastorsky, Jim & Collette
- +Kealy, William



Summerour Hall Renewed for Students

Students and teachers are enjoying the benefits of major renovations in Summerour Hall (in background). In it students attend behavioral science, education, and psychology classes. Improvements made in 1991-92 include handicap accessibility, a new classroom, and seven new or remodeled offices. (Photo by Sherrie Platt)

- +Kelley, Anthony
- +Kelley, Stacey
- +Kepkev, Robert
- +Killen, Mary
- +Kim, David
- +Kim, Julia
- +Kim, Mike
- +Kimber, Alice
- +King, Karen
- +King, Timothy & Joanna
- +Kingry, Dwight
- +Kinsey, Rick & Tina
- +Kinsey, Scott & Terrie
- +Kirkham, Kenneth
- +Kizer, Diana
- +Klingstrand, Arne & Lisa
- +Klinvex, Chris & Elizabeth
- +Kneller, Jennifer
- +Knight, Rowland & Lori
- +Knoll, Rebecca
- +Kobler, Walter
- +Kohadko, Dana
- +Koliadko, David
- +Kolozsvary, Holly
- +Kootsey, Esther
- +Kovalski, Gerald & Sandra
- +Kovalski, Ken
- +Kowarsch, Willfried
- +Krause, Keith & Michele
- +Krein, Nora
- +Kretner, Lani
- +Kuhlman, Iodi
- +Kutzner, Michael & Deann

- L
- +Lale, Tim
 - +Lamb, John
 - +Lambert, H. J.
 - +Lambeth, Kelli
 - +Lambeth, Patrick & Kathleen
 - +Lance, Michele
 - +Land, Edith
 - +Lane, Susan
 - +Lang, Chris
 - +Lang, Mauri
 - +Langham, Leanne
 - +Larson, Jamie
 - +Leach, Dorothy
 - +Leavitt, Carissa
 - +Leblanc, Paul & Argenta
 - +Lee, Burtrand
 - +Lee, Louise
 - +Leggett, Dennis & Constance
 - +Leive, Joy
 - +Lemke, Michelle
 - +Lesko, Arthur & Lennette
 - +Lettrick, Suzanne
 - +Leui, Kimberlv
 - +Lewis, Jamie
 - +Lighthall, Larry
 - +Lilly, Marguerite
 - +Lisica, Lynn
 - +Loga, Michael & Janene
 - +Long, Angeline
 - +Loor, John & Susan
 - +Lopes, Bryan & Janice
 - +Lorev, Michael

- +Louden, Brian
- +Lovelace, Tanner
- +Lowe, Anne
- +Lowe, Tammy
- +Lucas, Charlotte
- +Luke, Martin
- +Lvons, Justin & Carol

- M
- +MacLafferty, Bob & Ruth
 - +Magray, Robert
 - +Magurski, Michael
 - +Mahdeem, Har
 - +Malin, Wesley
 - +Marbun, Rina
 - +Marion, Dora
 - +Marsh, Christine
 - +Martin, Fred & Eugenia
 - +Martin, Philip & Pamela
 - +Martling, Maureen
 - +Martz, Bonnie
 - +Martz, Cindy
 - +Massev, Christen
 - +Matchim, Trevor & Kellie
 - +Mathews, John & Janice
 - +Mathewson, Leslie & Kellie
 - +Mavrikos, Paul
 - +Maxwell, James
 - +Mazat, Alired
 - +Mazat, Pauline
 - +McCalla, J. E.
 - +McClure, Howard
 - +McCutcheon, Wwatt

- +McDannel, Beckv
- +McDonald, Linda
- +McElroy, Glenn
- +McFarland, Troy
- +McIntyre, Monica
- +McKee, Helen
- +McKee, Lois
- +McLaughlin, Michelle
- +McQuistan, Joel & Shari
- +Meade, Chas & Margell
- +Meister, Lowell & Dellene
- +Merrifield, Alice
- +Messinger, Jon
- +Metcalf, Holly
- +Meyer, William
- +Meyers, Daryl & Kerstin
- +Miller, Gregory & Sabrina
- +Miles, Juanita
- +Miller, Amy
- +Miller, Bette
- +Miller, Brian
- +Miller, Edwina
- +Miller, Gordon & Rita
- +Miller, Holly
- +Miller, Jeanne
- +Miller, Russell
- +Mitchell, Michael
- +Mitzeltelt, Monte
- +Mixon, Rebecca
- +Mottit, Dawn
- +Mohr, Mike
- +Mohundro, Ruth
- +Mollenkopt, Dawn
- +Monen, David
- +Montes, Joseier
- +Montgomery, Jeanne
- +Moody, Jr., William
- +Moon, Zelda
- +Moonev, Lewis
- +Moore, James & Tina
- +Morales, Daniel
- +Moreland, Ben & Sherrie
- +Morman, Richard & Joyce
- +Morton, Angela
- +Moses, Marion
- +Moulton, David & Janelle
- +Moxley, Jacqueline
- +Mover, Lisa
- +Murphy, Amber
- +Murray, Lenawee
- +Myers, Amanda
- +Myers, Gregory

- N
- +Nagel, Marsha
 - +Neal, Charles
 - +Neal, Kenneth & Heather
 - +Nelson, Shane & Cheril
 - +Nerness, David & Jennifer
 - +Neuhaus, Jennifer
 - +Neumann, Linda
 - +Nicholaides, Stephen
 - +Nickol, Monica
 - +Nieves, Jose
 - +Nisenbaum, Salome
 - +Nolan, Nadine
 - +Nolie, David
 - +Norris, Greg
 - +Norton, Kenneth

- O
- +O'Brien, Eric
 - +O'Brien, John & Georgia
 - +Ott, Juvernia
 - +Olmstead, Hilda
 - +Olmstead, Lila
 - +Olnev, Leo
 - +Olson, Gary
 - +Openshaw, Wayne
 - +Orndorff, Doris
 - +Orr, Jack & Virginia

- +Ottati, Bobby
- +Overstreet, Robert & Tammy
- +Owen, Heather

- P
- +Palmer, Ted & Elaine
 - +Paradis, Donald
 - +Parker, Vera
 - +Patsel, Wilford
 - +Payne, Benita
 - +Payne, Larry
 - +Peav, Ralph
 - +Peden, Kim
 - +Pellington, Lois
 - +Pelther, Tammie
 - +Pennington, Kara
 - +Perales, Marvmer
 - +Pettibone, Dennis
 - +Pettv, Cecil & Mary
 - +Peverini, Christine
 - +Phillips, Chezanne
 - +Pichulo, Kenneth & Jamie
 - +Pleasants, Lloyd & Edith
 - +Poist, Nancy
 - +Polycarpe, Martine
 - +Powers, Kathy
 - +Pratt, Doug
 - +Prelog, Wendy
 - +Puckett, Brett
 - +Pulliam, Reginald
 - +Pulliam, Richard
 - +Purvis, Quentin & Kimberly
 - +Putnam, Dale
 - +Pyke, Teddie & Helen

- R
- +Radebe, Caleb
 - +Randolph, Gary & Karen
 - +Randolph, Linda
 - +Randolph, Zenith
 - +Redden, Janet
 - +Reed, Rhondalyne
 - +Reiber, Cynthia
 - +Reynolds, Karen
 - +Rice, Reginald
 - +Richardson, Daisy
 - +Riggs, John & Helene
 - +Rilea, Iris
 - +Rimmer, Gregory & Renee
 - +Ringer, Benjamin & Carol
 - +Ringer, Brian & Joelle
 - +Ringer, Laurie
 - +Robertson, Charles & Charlene
 - +Robertson, Earl
 - +Robinson, Alvice
 - +Robinson, Dorothy
 - +Robinson, Kyle & Jennifer
 - +Robinson, Sharlene
 - +Robison, John & Keri
 - +Rodriguez, Ivonne
 - +Rodriguez, Maria
 - +Roeske, Richmond
 - +Rogers, Rose
 - +Rollins, Kim
 - +Rosa, Angela
 - +Rosete, Sharon
 - +Rouse, Paul
 - +Rouse, Rhonda
 - +Rowlett, Phyllis
 - +Ruf, Warren & Jane
 - +Rumsev, Marsha
 - +Runvon, Clyde
 - +Russell, David
 - +Russell, Kathy
 - +Russell, Sabrina
 - +Ryan, Jane

- S
- +Sager, John
 - +Sager, Mark & Reba
 - +Sakul, Vanda

+Sanchez, Shirley
 Saphiott, Andrew
 +Satterfield, John
 Sauder, Vinta
 Sawyer, Tammy
 +Schermerhorn, Hans
 +Schmidt, Andrew
 +Schmidt, Doreen
 +Schneider, Edward
 Schomburg, William
 Schooler, Betsy
 +Schroer, Michelle
 +Scoggins, Pamela
 +Scott, Judy
 Scott, Lori
 +Seaton, Juliet
 +Seitert, Jennifer
 Shain, Martin & Jacquelyn
 Shank, Twyla
 +Sharpe, Elaine
 +Shearer, Kerry
 Sheddian, Jack
 Shields, Chaz
 +Shiplev, Donna
 +Short, Donald
 +Showalter, Ted
 +Sicher, Anna
 +Sigsworth, Dean & Candis
 +Simmons, Ella
 +Sircar, Diana
 +Skantz, Heidi
 +Smith, Laura
 +Smith, Paul
 Smith, Peggy
 +Smith, Suzy
 +Smith, Tracy
 +Smith II, James
 +Snider, Kevin
 Snyder, Terry & Harriet
 +Solis, Daniel & Cynthia
 +Song, Danny
 Soule, John
 +Sowers, Leona
 Sperka, Marilyn
 Spilovoy, Robert
 Spruill, Mildred & Joy
 +Stairs, Kimberly
 Stanaway, Ian & Cindy
 Starkev, Dennis & Tam
 Steele, Dena
 +Stephenson, Titany
 Stevens, Geraldine
 +Stocks, Debra
 Stone, Thomas & Stella
 +Stoner, Jeremy & Nicole
 +Strike, Ida
 +Strock, Joe
 +Stuyvesant, Valerie
 +Sullivan, Glen
 Susleck, Dorothy
 +Swattord, John
 Swayze, Carol
 Swinson, Martin & Sheri
 +Sykes, Michelle

T . . .
 +Tabuenca, Monica
 Taylor, Donald & Charlotte
 +Taylor, George & Nadene
 +Terrel, Bryan
 +Tessier, JoAnne
 Thatcher, Virginia
 +Theoford, D'Anthony
 +Theus, Elizabeth
 +Thielen, Jennifer
 +Thomas Dale
 Thomas, Karen
 +Thompson, Martin
 +Thompson, Tittany
 Tittany, James & Lucia

Tindall, Donald & Helen
 +Tindall, M. B
 Tolbert, Gary & Malia
 +Townsend, Monique
 +Traverso-Bante, Dea
 Tschickardt, Monica
 +Tuell, Barbara
 Tull, Murrell & Danette
 Turk, Jon & Lisa
 Turner, Elaine
 Tyrrell, Dale

U , V . . .
 +Underwood, Jerr
 +Valles, Luis
 +Van Horn, Sandra
 +Van Meter, Christina
 +VanBeukering, Michael
 +Vance, Stephanie
 Vargas, Chris
 Varghese, Caroline
 +Varner, Vickie
 +Veach, Laura
 +Veness, Evan
 Vital, Greg
 Voorheis, Alice
 +Voth, Lorena

W . . .
 Walden, Relious & Beverly
 Waldrop, Mark & Christine
 Waller, David & Amy
 +Walter, Kimberly
 +Walton, Lori
 Ward, Paul & Mildred
 Warren, Dawn
 +Watson, Elizabeth
 Watson, Lanier
 Watson, Mildred
 Webb, Erma
 +Weitzel, Lindy
 Welch, Stephen
 +Wenzel, Miva
 +Whitney, Dorothy
 Whittaker, * Mildred
 +Wiegand, Frances
 +Wilcut, Shawn
 +Wilder, William
 Wilkens, Todd & Marsharee
 +Wilkowski, Whitney
 +Wilks, Gilbert
 Willett, Gregory
 +Williams, Charles & Charlotte
 Williams, Haskell & Cindy
 +Williams, Jon
 Williams, Larry
 Williams, Nathan & Donna
 +Williams, Sharon
 Williams, Walton & Carol
 Willis, Betty
 +Wilson, Andrew
 Wilson, Elden & Thelma
 +Wing, Michelle
 Wise, Heather
 Wohlers, Bobbie
 +Wolcott, Tracie
 +Wolt, Dana
 +Wolff, Gretchen
 Wood, Izora
 Wood, Michael
 +Woodruff, Dan
 Woods, Chet & Carol
 +Wooley, Lisa
 Woolsey, Raymond & Challis
 +Woring, Angela
 +Wright, Earl
 Wurl, Loel & Marilyn
 +Wyatt, Melanie

Y , Z . . .
 +Yeager, Jeffrey & Shea
 +York, Leslie
 Young, Robert & Michelle
 +Young, Scott & Chandra
 Zalabak, Wilma
 +Zegarra, Robert
 +Zepeda, Albert
 +Zhu, Geoffrey
 +Zill, Crystal
 Zill, Forrest
 +Zill, Kenneth & Denise
 +Zmaj, Ronnie

Organizations

A E Staley Manufacturing Co
 +Academic Gastroent. Inc
 +Ace Hardware of Chatt Inc.
 +AFCO Inc.
 +AGT-The Chatham Foundation
 +Allstate Business Systems, Inc
 American Engineering Corp.
 American National Bank
 +American Rice Inc
 +American Whey Company
 Angelica Inc.
 APV Baker Inc.
 Athletic Specialties
 +Atlanta Hawks, Ltd
 Ben O'Neal Company Inc.
 Bender-Goodman Company
 Benwood Foundation Inc
 Bishop Baking Company
 Boise Cascade Corporation
 Bunge Foods
 +Byrton Dairy Products
 C.Y. Inc

Carolina Conference Assoc
 Chambliss & Bahner
 Chatt Coca-Cola Bottling Co.
 Chattanooga Ear, Nose & Throat
 Collegedale Credit Union
 Continental Specialty Company
 +D & B Rental Properties
 Dow Chemical USA
 Eastlex Machine Corporation
 +Ernst & Young Foundation
 +Excerpta Medica, Inc
 Exxon Education Foundation
 +Flex-Pak Inc.
 +Gav & Erskine Love Found.
 GenCorp Foundation Inc
 General Conference of SDA
 +Gentry Chev Pontiac-Buck
 Geo, Inc.
 +Georgia-Cumberland Assoc
 Georgia-Cumberland Conf.
 Greenville Comm. Concerts
 +Griffin Pre Co., Inc.
 +GSB Associates Inc.
 Gult States Conference
 +Gulf States Paper Corporation
 +Harris Tire Co., Inc
 Hunter Oil Company, Inc.
 IBM Inc.
 Jackson SDA Church
 +Jacobs Wholesale Paper Co.
 John Hicks Olds-GMC Truck, Inc
 K. W. Grader Foundation
 +Kirkman and Belles
 +Kreme House
 Ky-Tenn Conference of SDA
 Lane Funeral Home
 Lee-Smith International Inc.
 +Life Care Center of Collegedale
 +Lonza, Inc.
 +M & M Holdings, Inc

Massey-Fair Ingredient Sales
 +McCollum & Rawlins
 McNeilus Truck & Mtg. Co
 Meigs County Bank
 Merrill Lynch Inc
 Michael Barto & Company
 +Milliken & Company
 Mondo Baking Company
 Mountain View Ford
 +North American Div of SDA
 +Orlando Regional Med Center
 +PG Chemical Consultants, Inc
 Pioneer Bank
 Procter & Gamble Foundation
 +Professional Awards Inc.
 Quinn Supply Company
 R. J. Reynolds
 +Retired Workers Fellowship
 +Ringgold Telephone Co.
 +Sconza Candy Company
 +SDA Church of Wayne
 South Atlantic Conference
 Southeastern Electric Supply Co.
 Southern Union Cont. Assoc
 State Farm Companies Found.
 Syntex Inc
 Tenn. Independent College Fund
 Tennessee Valley Sales Co.
 The Blommer Foundation
 +The Marlando Club
 +The Peanut Factory
 Thomas Staley Foundation
 +Thompson Truck Repairs
 Universal Tire Inc
 USF&G Insurance
 Utility Trailer Sales of Tenn.
 +Volvo GM Heavy Truck Corp.
 Walter Wood Supply Company
 Whirlpool Foundation
 +Willamette Industries Inc.



Plans for New Science Center Being Developed

A contemporary and functional science center that echoes details from other campus structures—this describes the structure which will anchor the south end of the campus. Vice presidents Dale Bidwell and Floyd Greenleaf are shown reviewing architectural drawings by Peter Vukshich for the three-story 50,000-square-foot home for biology, chemistry, computer science and technology, engineering, mathematics, and physics. Pledges and cash have come within \$0.3 million of the \$3.9 million campaign goal. (Photo by Matt Niemever)

Committee of 100

Anderson, Eugene	Johnson, Anna
Andrews, Francis	Johnson, Harold
Baker, Sue	Johnson, Oscar
Barto, Michael	Kenny, Fisher
Berner, Perry	Kerr, Elton
Blair, Mardian	Lacey, Charles
Bothe, Brian	Lawing, Lloyd
Bottomlev, Flip	Leland, John
Bowen, Dewitt	Levering, Thelma
Bowers, Robert	Ludington, Cliff
Boyd, Velma	Mallernee, Rollin
Bovle, Jim	Martin, Douglas
Burdick, Al	McClarty, Jack
Burdick, Paul	McElroy, Buddy
Butterfield, Art	McGinnis, Bill
Byrd, Cookie	McKee, Debra
Cason, Bud	McKee, Ellsworth
Castleberg, David	McKee, Jack
Chastain, Chalmer	McKee, O.D.
Clark, Jerome	McKee, Jr., Rusty
Coppock, Lucille	McKinney, J.R.
Cothren, Frederic	McNeilus, Denzil
Cowdrick, Jesse	Meister, Adam
Crandell, Donna	Merchant, Bob
Cross, Jessie	Metcalfe, Bill
Cummings, Des	Michals, Herbert
Cushman, Willis	Miller, Scott
Dart, Mona	Morris, James
Davis, *James	Murphy, Bob
Davis, K.R.	Murphy, Harvey
Dean, Olivia	Patterson, Barry
Downs, Nevin	Pendleton, Les
Duge, John	Preston, Forrest
Durichek, Helen	Preston, Winton
Farrow, Ioe	Rimmer, *Wavne
Fleming, Jr., Chick	Ringer, Bruce
Friberg, Jr., Russell	Rogers, Herbert
Fuller, Forrest	Schmidt, Ehrich
Fuller, Fred	Shaw, Rahn
Fuller, Glenn	Shim, J.T.
Garver, Phillip	Sines, Al
Graves, Charles	Sloan, Thvra
Hall, Albert	Smith, William
Hall, Stephen	Sommerville, Lewis
Hamilton, Ted	SC Student Association
Hendershot, Lewis	Taylor, Dennis
Henriksen, C. David	Taylor, Victor
Howell, Walter	Taylor, William
Huennergardt, Howard	Taylor II, William
Hulsey, Bill	Terrell, Richard
Iles, Bill	von Henner, Chan
Jackson, Edward	Whidden, Charles
Jacobs, Carl	Wiese, Calvin
Janzen, Wavne	Wilkins, Charles
Jarrett, David	Williams, James
Jensen, Robert	Willis, William & Jan
Jewett, David	Wilson, Charles
	Winters, David
	Wood, Elmyra

Information in this report on class participation covers the 1991-1992 fiscal year, specifically gifts from alumni made before May 31, 1992. Criteria for the class contribution report include gifts within a fiscal year totaling \$10 to \$5,000 from any one donor.

Class Contribution Report

CLASS	Class Agent	%	Amount
21-32	Edythe Cothren	44.7	\$15,230.00
33-37	Ercel Bennett	15.5	5,590.00
38-40	John Goodbrad	13.8	975.00
41-43	Clifford Ludington	29.6	627.50
44-46	Vern Dortch	7.7	350.00
47-48	Robert Wood	15.5	330.00
49	Frances Andrews	13.5	387.50
50	Tom Ashlock	14.6	1,825.00
51	David Henriksen	39.7	5,297.00
52	Layton Sutton	21.3	2,772.50
53	Kenneth Harding	16.4	622.50
54	Ted Graves	21.4	5,400.00
55	Grady Smoot	15.1	2,140.00
56	Dean Kinsey	18.4	1,079.00
57	Ron Rodgers	14.3	620.00
58	Bob Ingram	22.4	1,267.50
59	Robert Burchard	11.8	2,500.00
60	Winford Tate	4.9	215.00
61	Dan Rozell	4.7	720.00
62	Benny Moore	11.3	2,202.50
63	Helen Sauls	7.3	302.50
64	John Fowler	8.8	5,150.00
65	Herbert Coolidge	9.1	982.30
66	John Newbern	7.8	3,447.50
67	Barbara Whidden	10.3	697.50
68	George Powell	7.3	735.00
69	Bill McGinnis	5.5	305.00
70	Diane Avant	5.7	2,330.00
71	David Winters	6.7	5,560.00
72	John Loor	5.6	4,817.50
73	Doug Jacobs	5.8	975.00
74	Joyce Cotham	7.0	6,240.00
75	Peggy Smith	3.7	652.50
76	Dale Townsend	4.1	1,047.50
77	Patricia Minder	5.4	1,207.50
78	Vinita Sauder	5.4	2,521.00
79	Jim Closser	3.5	1,060.00
80	Fred Stephens	4.3	876.00
81	Val Miller	2.7	5,614.30
82	Brian Ringer	6.0	807.50
83	Ken Bradley	3.3	312.50
84	Pamela Anders	3.4	387.50
85	James Hakes	3.6	301.50
86	Suzanne Bird	3.7	447.50
87	Rusty McKee	2.8	542.50
88	Joi Richards Cook	5.3	4,580.00
89	Don MacLaferty	4.7	935.00
90	Mark Waldrop	3.9	690.83
91	Robert Young	4.4	2,039.50
92	Senior Class	95.5	3,718.65
	Graduates		\$109,435.08
	Former Students		33,651.92
	TOTAL		\$143,087.00

THOSE WHO WALKED THESE HALLS

Compiled by Angela Cobb

1920

Alfred V. McClure, '28, died March 29 in Loma Linda, Calif., at age 83. Of his 44 years in SDA church ministry, 13 were as president of the Missouri Conference. His children are Alfred C. McClure and Carol Hart.

Malvina (Zachary) Taylor, '26, passed away in Berrien Springs, Mich., on April 18. She served as violin teacher and string orchestra director at SJC from 1925 to 1930 and in the same capacity at several other Adventist schools until 1960.

1930

Philip Parker, '38, is retired in Inverness, Fla. He ministered in Burma for 20 years and pastored in Florida from 1966-1982.

Fisher Kenny, '31 and '47, and his wife, **Gladys**, '33, live in Candler, N.C. Three of their children attended SJC. Four grandchildren attended and two graduated from Southern.

1940

Esther Bruce, '46, has retired after serving 23 years in the Far Eastern Division in Taiwan, Japan, and Singapore and 8 years at the General Conference. She lives in Yucaipa, Calif.

Otis Graves, '47, and his wife, **Margaret**, live in Apopka, Fla., in the winter and in Maggie Valley, N.C., in summer. Otis retired after 37 years at the education department of the New Jersey Conference and three years in Hawaii.

Caroline (Keppler) Martin, '46, and her husband, **Ronald**, live in Avon Park, Fla. They have 5 children and 11 grandchildren. Both say they enjoy participating in Maranatha projects.

Beatrice (Ralls) Pierce, attended, has retired from serving as secretary for three Canadian Union College presidents. She lives in College Heights, Alberta, Canada.

1950

Neall Bottomley, '51, and his wife **Marilyn (Downs)**, '61, retired last year to Dun Pullin Farms in Mosheim, Tenn.

Juanita Coble, '54, lives in Waycross, Ga. She is the women's ministry coordinator for south Georgia and is head deaconess, community service volunteer, adult Sabbath School teacher and religious liberty secretary in her local church.

Arlene (Detamore) Davis, '55, has completed 26 years of denominational elementary teaching and resides in Dunlap, Tenn. She has three daughters and three grandchildren.

Lola Genton, '49 and '54, has retired to Inverness, Fla. She stays busy on her parents' blueberry farm. She taught for 39 years in SDA elementary schools in Florida and Thailand.

Barbara (Allen) Johnson, '55, and her husband, **Eric**, are retired. They reside atop their

own mountain in Newland, N.C. They spend time traveling, camping, gardening, hiking, and "enjoying every day that God gives."

Dollis Pierson, '50, lives in Hendersonville, N.C. Her two sons attended Southern and are serving as missionaries. Her three granddaughters also attended Southern.

1960

John Brownlee, Jr., '69, began law school this fall at Nashville School of Law. He and his wife, **Linda**, live in Portland, Tenn.

Karen Campbell, '67, lives in Weaverville, N.C., and works as a nurse. She enjoys working on her land and touring the world. She lived on a sailboat in the Bahamas and Caribbean for two years, and last year she camped and backpacked her way through the Northwest and Alaska.

Mike Clark, '66, and his wife, **Daisy (Welch)**, '66, reside in Madison, Tenn. Mike is self-employed and Daisy works at Vanderbilt Medical Center. They have two daughters, **Kelley**, attended, and **Kristi**, current.

Jan (Dickinson) Crittenden, '68, is the director of nursing at Highland Manor in Portland, Tenn. She and her husband, **David**, have two children, **Tammy** and **David**, current.

Barbara Foster, '62, lives in Longwood, Fla. She is the assistant superintendent of Volusia County Schools. Daughters, **Lori** and **Leslie**, attend Forest Lake Academy, and oldest daughter, **Lisa**, '91, manages a nursing home in Georgia.

Linda (Stringer) Lockwitz, '69, and her husband, **Edgar**, live in Berrien Springs. Linda is the clinical manager of recovery room and out-patient surgery at Mercy-Memorial Hospital. They have three daughters, **Kristen**, **Karin**, and **Karmin**.

Ramona (Reiber) Midamba, '68, and her husband, **Elijah**, reside in El Paso, Texas. Ramona is a consultant in obstetrics at Thomason Hospital. Elijah is president of Kenica International. They have two daughters, **Rachel** and **Alexandra**.

Marshall Mitchell, '66, and his wife, **Betty**, '62, live in Bryant, Ala. Marshall works at Dixie Savings Stores and Betty at the Electric Power Board in Chattanooga. They have three children, **Jonathan**, **Phillip**, current, and **Celia**, '92.

Ronald Numbers, '63, is the William Coleman professor of history of science and medicine at the University of Wisconsin-Madison. He published *Prophetess of Health* which relates the story of Ellen White's career as a health reformer. He and his wife, **Janet**, live in Madison, Wis.

Donnie (Vance) Olis, '66, is vice president of Alabama Quality Assurance Foundation. She and her daughter, **Meghan**, live in Pell City, Ala.

Alta (Philo) Zdon, '60, and her husband, **John**, retired in Berrien Springs, Mich. They enjoy traveling, spending winters in Florida, and taking in senior citizens activities at home and elsewhere.

Ruby (Sheetz) Ryckman, '68, works in quality improvement and risk management at a children's psychiatric hospital and also gives home health visits. She has a son, 8, and lives in Rockledge, Fla.

Ted, '69, and **Betty (Harris) Schoonard**, '69, live in Riverside, Calif. Betty is a public health

nurse for Riverside County Department of Health. They have two daughters, **Lucinda** and **Melissa**.

June (Hart) Siler, '62, and her husband, **Maurice**, live in Coalmont, Tenn. June says she enjoys being a housewife, holding church offices, and traveling with Maurice.

Maria (Morejon) Weiss, '69, works part time at a small alcohol and drug recovery center. She and her husband, **Dave**, live on a 30-acre raspberry farm. They have three daughters, **Heidi**, **Katrina**, and **Julie**.

Ed, attended, and **Lynne (Riley) Westfaul**, '68, live in Liberty, Miss. Lynne is director of nursing at Meadville Nursing Home. They have two daughters, **Rachel**, 10, and **Ruth**, 7.

James, '64, and **Linda (Comer) Wolcott**, '64, reside in Albuquerque, N.M. James is a chemist at Sandia National Laboratory. Linda is an office nurse at an OB/GYN practice. They have two children, **Tonda** and **James**, attended '85-'87.

Chester Woods, attended, and **Carol (Lewis)**, '67, live in Bangor, Maine. Chet has retired from 20 years as a firefighter. Carol is 11-7 charge nurse on the post-coronary unit at St. Joseph Hospital. They have two children, **Bethany** and **Keith**.

Newton Zanes, '69, and his wife, **Joy (Hemberger)**, '69, reside in San Antonio, Texas. Joy works as a medical bill review manager. They have two children, **Jessica** and **Newton IV**.

1970

Richard Baskin, '77, of Charlotte, N.C., and his wife, **Gayle (Dunhill)**, '78 have three children, **Katy**, **Kelly**, and **Carson**. Gayle has retired from being a coronary care recovery nurse. Richard is a cardiovascular perfusionist.

Rhonda (Huffaker) Bolton, '72, and her husband, **Robert**, live in Ridgefield, Wash. Rhonda completed her A.S. degree in computer information systems and computer programming. They have two children, **Rachelle**, 15, and **Ryan**, 13.

Keith Bowen, attended, and his wife, **Edna (Strandquist)**, '70, have four children, **Todd**, **Kerri**, **Kevin**, and **Megan**. The Bowsens reside in Loveland, Colo. Edna is the director of health services at Campion Academy.

Douglas Bricker, '73, is a radiologist. His wife, **Kathy (Brown)**, '73, is a maternal-child nurse. They have four daughters and live in Columbus, Wis.

Deborah Clark, '75, is attending California State-Sacramento for her B.S. in nursing. Her husband, **Doug**, owns a business as a certified dermatologist. They have two children, **Amy**, 16, and **Adam**, 12, and reside in Lodi, Calif.

Tommy Davidson, '78, and his wife, **Susan (Maretich)**, '75, have two daughters, **Kelly** and **Taylor** and live in Chattanooga. Susan is assistant professor of nursing at University of Tennessee Chattanooga. She is pursuing her doctoral studies at University of Tennessee Knoxville.

Debby (Stephens) Edgerton, '77, lives in Avon Park, Fla. Her husband, **Brent**, is director of marketing and Debby works part time in OB at a local hospital. They have two sons, **Eric** and **Andrew**.

Judy (Dailey) Endries, '74, and her husband, **Bud**, live in Oak Creek, Wis. Judy works for

THOSE WHO WALKED THESE HALLS

Midwest Express Airlines as a flight attendant and on weekends as a cardiac RN.

Karen (Salhany) Hutchens, '79, is a cardiothoracic operating room nurse at St. Thomas Hospital. She and her husband, Craig, a songwriter-musician, live in Nashville, Tenn.

Del Johnson, '75, and his wife, **Andrea**, '74 are missionaries in Singapore. Andrea is the school nurse at Singapore Mission School for primary and secondary students. Del is associate treasurer for the Far Eastern Division. They have two sons, Jeremy and Reggie.

Ronald Johnson, '79, teaches math at Andrews University. His wife, **Frances (Farrior)**, '79, is a neonatal ICU nurse in South Bend, Ind. They have two children, Danny, 10 and Rebecca, 2. The Johnsons reside in Buchanan, Mich.

Gail (Leaming) Jorgensen, '78, and her husband, William, live on a 93-acre farm in Maryville, Tenn., complete with an old house to remodel. They have two sons.

Steven Knight, '69, and his wife, **Connie (Thore)**, '72, reside in Apopka, Fla. Steve and Connie run a nutrition sales and health seminar business. They have three children, Erik, Shannon, and Angel.

David Lawrence, '73, and his wife, **Paula**, '72, reside in Caldwell, Idaho. Dave is a design engineer for a fiberoptic company. Paula is an accountant for a vocational rehabilitation center. They have two children, Stuart and Connie.

Karen Lemoine, '73, works part time in labor and delivery in a small community hospital. Her husband, William, works as administrator for the district attorney. They have two sons.

Janice (Wuestlin) Mayberry, '77, and her husband, Randall, have traveled extensively. They now reside in Sitka, Alaska, where they just finished building a house that sits on the ocean. Janice is a staff nurse at a 25-bed hospital.

Sylvia (Davidson) Mayer, '75, is a nursing consultant for the California State Department of Corporations. Her husband, Harold, is an exercise physiologist who does mobile cardiovascular testing. They have four boys, Tom, Scott, Brock, and Taylor. The Mayers reside in Paradise, Calif.

Robyn (Bowman) Meinhardt, '77, is a partner in the law firm of McDermott and Trayner. Her husband, Carl, designs and builds space craft for Jet Propulsion Laboratory in Pasadena. They have a son, Jason, 5. They live in Pasadena, Calif.

Cheryl Merritt, '77, works at the Northwest Organ Procurement Agency and as ICU nurse at Providence Hospital. She lives in Anchorage, Alaska.

Kathy (Oakley) Aitken, attended '74-'78, and her husband, Bob, have twin sons, Michael and Matthew, born May 24. They live in Huntsville, Ala., where Bob is employed at Intergraph.

Rodney Siddall, attended, and his wife, **Diane (Bennette)**, '76, live in Tallmadge, Ohio. Rod is a private practice dentist. They are active in the Akron First SDA Church.

Deborah (Aydelotte) Salter, '74, is a health resources coordinator for an insurance company. She and her husband, Buddy, have two children, Kimberly and Christy, and live in McDonald, Tenn.

Bob Strom, attended, and his wife, **Mayda (Laboy)**, '79, live in Laurel, Md. Bob is a com-

puter software developer, and Mayda home-schools their daughters, Melissa and Michelle.

Keith Terrill, attended, and **Linda (Henderson)**, '79, reside in Apopka, Fla. Keith is a radiologic technologist in the angio/heart cath lab, and Linda is the patient care systems coordinator at Florida Hospital. They have two children, Justin and Codi.

Franklin Trimm, '76, of Mobile, Ala, and his wife, **Donna (Couden)**, '75, have two children, Angie and Lenny. Donna works in the recovery room at Knollwood Park Hospital and is working on a master's in nursing administration.

Fred Turner, '74 and '85, is manager/director of operating room and infection control at Coffee Medical Center. His wife, **Nancy (Wardle)**, '70, is an RN supervisor and quality improvement coordinator. They have two children, Timothy and April. The Turners live in McMinnville, Tenn.

Gary Walls, '72, is the aviation manager at McKee Foods. His wife, **Connie (Regal)**, '75, is a nurse liaison at Renaissance Physical Rehabilitation Hospital. They have two children, Richard and Ryan. The family live in Apison, Tenn.

1980

Gary Blinn, '81, and his wife, **Laurey (Wilcox)**, '77, reside in Apison, Tenn. Gary is chief nurse anesthetist at Erlanger Medical Center in Chattanooga and assistant director of the school of nurse anesthesia. He is also the president of the Tennessee Association of Nurse Anesthetists.

Cindy (Henderson) Brown, '80, is the operating room nurse coordinator for neuro surgery at Vanderbilt University Hospital. She and her husband, DeWayne, have twin daughters, Megan and Morgan. They reside in Nashville, Tenn.

Kathy (Fillman) Brummett, '83, and her husband, Jim, live in Longwood, Fla. Kathy works in nursing staff education at Florida Hospital. They are expecting their first child this winter.

Brenda Brusett, '80, graduated from Walla Walla with a B.S. in social work. She has lived in Israel, Greece, France and Australia and is now in Tasmania. She has a daughter, Tisha, 1.

Kathy (Campbell) Dodd, '88, teaches at the Florida Hospital College of Health Sciences. She and her husband, Dennis, live in Winter Park, Fla., and are expecting their first child this fall.

Michelle (Cole) Dudley, '84, and her husband, Steven, live in Cape Coral, Fla., with their daughter, Kristyn. Michelle is a medical case manager for Travelers Insurance Company and works at a local hospital in labor and delivery.

Bonnie (Littell) Durocher, '85, is an OB nurse at Vanderbilt University Hospital. Her husband, Bob, works in cardiac recovery. They live in Greenbrier, Tenn., and have two children.

Ronda (Yost) Eberly, '85, and her husband, John, live in Taylors, S.C. John owns a family medical practice. They have a son, John.

Deborah (Gagnon) Ellis, '81, is assistant professor of nursing at John Tyler Community College in Chester, Va. Her husband, John, is a dental student. They have two children, John III, and Garret. They live in Chesterfield, Va.



Staci and Jim Froelich

Staci (Henderson) Froelich, '87, is regional managed care coordinator for Manor Health Care Corp. Her husband, Jim, is senior systems analyst officer for Nations Bank. They live in Takoma Park, Md.

Michelle (Lawter) Fullam, '85, works as a nurse at Park Ridge Hospital in Fletcher, N.C., and teaches nursing clinicals at a community college. She and her husband, Steve, reside in Hendersonville, N.C., and have two children, Amy and Eric.

Russell Gilbert, '82, is finishing up his first year of law school at the University of Kansas. He worked for ten years as the Health Services Manager at Shawnee Mission Medical Center. He and his wife, Deborah, have two sons, Jeffrey and Zachary.

Tim Glantz, '85, and his wife, **Susan (Roach)**, '85, reside in Dayton, Va. Susan works in the operating room at King's Daughter Hospital. Together they also run a successful marketing business.

Gary Goggans, '85, and his wife, **Lori (Roth)**, '83, have two sons, Ken and Justin, and live in Purvis, Miss. Gary works in surgery at Methodist Hospital.

Eric Gurserson, '86, and his wife, **Dawn (Burger)**, '86, reside in Goodlettsville, Tenn. Eric is a charge nurse in the area of acute dialysis. Dawn is a charge nurse in telemetry. They have a son, Coleman.

Rebecca Hayes, '83, is a nurse manager for pre-admission testing and observation at Loma Linda University Medical Center. She lives in Loma Linda, Calif.

Stan Hickman, attended, and his wife, **Vanessa (Radovan)**, '87, reside in Riverside, Calif. Stan is completing his master's degree in history at the University of California Riverside. Vanessa is a school nurse in the Alvord Unified School District and is also completing a health services degree at California State University in Los Angeles.

Sharon (Lincoln) Holland, '85, and her husband, David, are living in Metairie, La. Sharon plans to graduate with her master's degree in midwifery. She also is employed as a flight nurse in the Air Force Reserves. They have a daughter, Jordan.

Mark Huber, '86, works at a psychiatric hospital near Apison, Tenn. He is also attending school for his RN. His wife, **Sharon (Gebhard)**,

THOSE WHO WALKED THESE HALLS

'81, works part time in home health care. They have a son, Stefan. The Hubers reside in Apison, Tenn.

Timothy Jennings, '83, and his wife, Tracy, are stationed at Fort Gordon, Ga. Timothy is a doctor in psychiatry for the Army. He was selected by the Army Surgeon General as a resident delegate to the American Medical Association 1991-1994.

Miki (LaCourt) Jicha, '83, and her husband, John, live in Oconto, Wis. Miki is the nursing coordinator for the Oconto County Home Nursing Program. John deals in cattle.

Jeff Joiner, '80, and his wife, **Judy**, attended, live in Manchester, Ky. Jeff is director of nursing services at Memorial Hospital. They have two daughters, Shauna and Kristi.

Roland Joy, '82, and his wife, **Colleen (Rice)**, '79, served as traveling nurses and now work in ICU and CSICU at Richmond Memorial Hospital. They have two children, Jarrod and Francesca, and live in Richmond, Va.

Laverne Keizer, '89, and his wife, Lishcia, live in Memphis, Tenn. Laverne is a fourth year medical student and works as an ICU nurse. They have a daughter, Madison.

Steven King, attended, and his wife, **Cindy (Frost)**, '84, have a daughter, Kaylin. They live in Collegedale. Cindy works as an OB nurse at Humana Hospital.

Patty (Edwards) Knapp, '80, and her husband, Randy, live in Eagle Point, Ore. They have two sons, Brady and Corey. Randy is a partner in a construction company in the Medford area. Patty is a homemaker.

Jody Knarr, '86, lives in St. Joseph, Mich. Jody is the care manager for the St. Joseph Agency on aging.

Sandra LaBar, '80, is the nursing home administrator at Westview Health Care Center. She resides in Wyoming.

Mary Larkin, '83, lives in Cape Neddick, Maine. She has been awarded second place in the fiction category of a national literary competition. Mary's entry *Entertaining Angels* will be published in the spring/summer issue of the literary journal, *New Voices*. She is a member of the Seacoast Writers Association and has served on their board as director of literary awards.

Rebecca Hayes, '83, is a nurse manager for pre-admission testing and observation at Loma Linda University Medical Center. She lives in Loma Linda.

Russell Laughlin, '84, is youth pastor at the Hinsdale SDA Church. His wife, **Jeanne (Craig)**, '82, works part time as an emergency room nurse. They have two children. The Laughlins live in Darien, Ill.

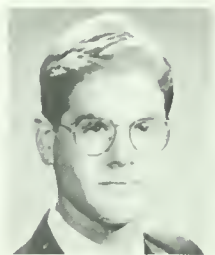
Lisa (Longley) Leatherwood, '82, works at Silver Bluff nursing home, teaches at Haywood Community College, and speaks for continuing education programs in geriatrics. She is also working on her master's in nursing at the University of North Carolina. She is newly married to her husband, Bob.

Katrina Lorren, '85, is a senior consultant for MC Strategies, Inc., in Atlanta, Ga. She received her bachelor's degree in health information administration from Loma Linda University in 1988. Katrina lives in Collegedale.

Dana (Austin) McKenzie, '88, and her husband, Richard, live in Stone Mountain, Ga. Dana completed her bachelor's degree in nursing in 1990 from Emory University and plans to continue study toward her master's degree in nursing. Richard is studying to be a chiropractor.

Christopher McKee, '88, received his master's degree in management from the J. L. Kellogg Graduate School of Management at Northwestern Uni-

versity. Chris is employed as a product manager in the marketing department at McKee Foods Corporation. He and his wife, **Janel (Hanson)**, '87, have two children, Jordan and Nathan. Chris and Janel reside in McDonald, Tenn.



Samuel Miller, '80, and his wife, **Teresa (Connell)**, '80, live in Augusta, Ga. Samuel finished a military tour in Germany in 1987. He is studying court reporting. Teresa is a cardiology nurse at St. Joseph Hospital. They have a son, Stephen.

Myron Mixon, '87, and his wife, **Valorie (Johnson)**, '86, reside in Fletcher, N.C. Myron teaches health, P.E., and gymnastics and sponsors the health team and student association at Fletcher Academy. Valorie is a physician's assistant for an orthopedic surgeon in Asheville.

Aila (Strasowsky) Stammier, attended, and her husband, Wolfgang, are moving to the former East Germany. She will teach and he will dean. Aila translates English, German, and French. They have a girl, Cathlin, and live in Friedensau, Germany.

Ruth (Hamilton) Walker, '81, and her husband, Larry, live in Berrien Springs, Mich. They are expecting their first child in the fall. Ruth is employed as a public health nurse by the Berrien County Health Department. Larry is a computer systems analyst with Digital Interface Systems.

1990

Joanna (Evans) Graham, '90, married her husband, David, this summer. She works in CCU at Erlanger Medical Center. They live on Signal Mountain, Tenn.

Julie Jacobs, '91, has moved to Simi Valley, Calif., after a year as a student missionary in Korea. She works for the Pacific Union Conference in the Church Ministries Department.

Sheila (Beltz) Klein, '90, works at Lincoln General Hospital in the ER trauma unit. She and her husband, David, have a son, Collin, 1. The Kleins live in Lincoln, Neb.

Tina Leeseberg, '90, is the assistant head nurse of the orthopedic floor at Erlanger Medical Center. She resides in Hixson, Tenn.

Pearlie (Reyes), '90, and **Jeff Pope**, '91, were married August 2 in Ft. Lauderdale, Fla. Jeff is employed full time at Nashville Memorial Hospital and part time at Tennessee Christian Medical Center. They live in Madison, Tenn.

Darlene (Almeda) Showalter, '90, and her husband, **Michael**, attended, live in Florence, S.C. Darlene works for the McLeod Regional Medical Center as a staff nurse and charge nurse. She is also working on her MSN.

Darryl Wilkens, '92, and his wife, **Laura (Putnam)**, '92, reside in Ooltewah, Tenn. Laura works as a nurse on the Cardiac Stepdown Unit at Memorial Hospital.

Kimberly White, '90, works as an internal auditing consultant for the Hospital Corporation of America. She lives in Dunwoody, Ga.

"ALL NEW AND TOGETHER"



Best Western Heritage Inn

I-75 Exit 7B

7641 Lee Highway • Chattanooga, TN 37421

615-899-3311 • 800-441-8034

\$34.00 ⁺TAX

1 - 4 People

**PLEASE PRESENT THIS
COUPON AT CHECK-IN**

Thank you, Southern College Alumni

Good thru December 1993

